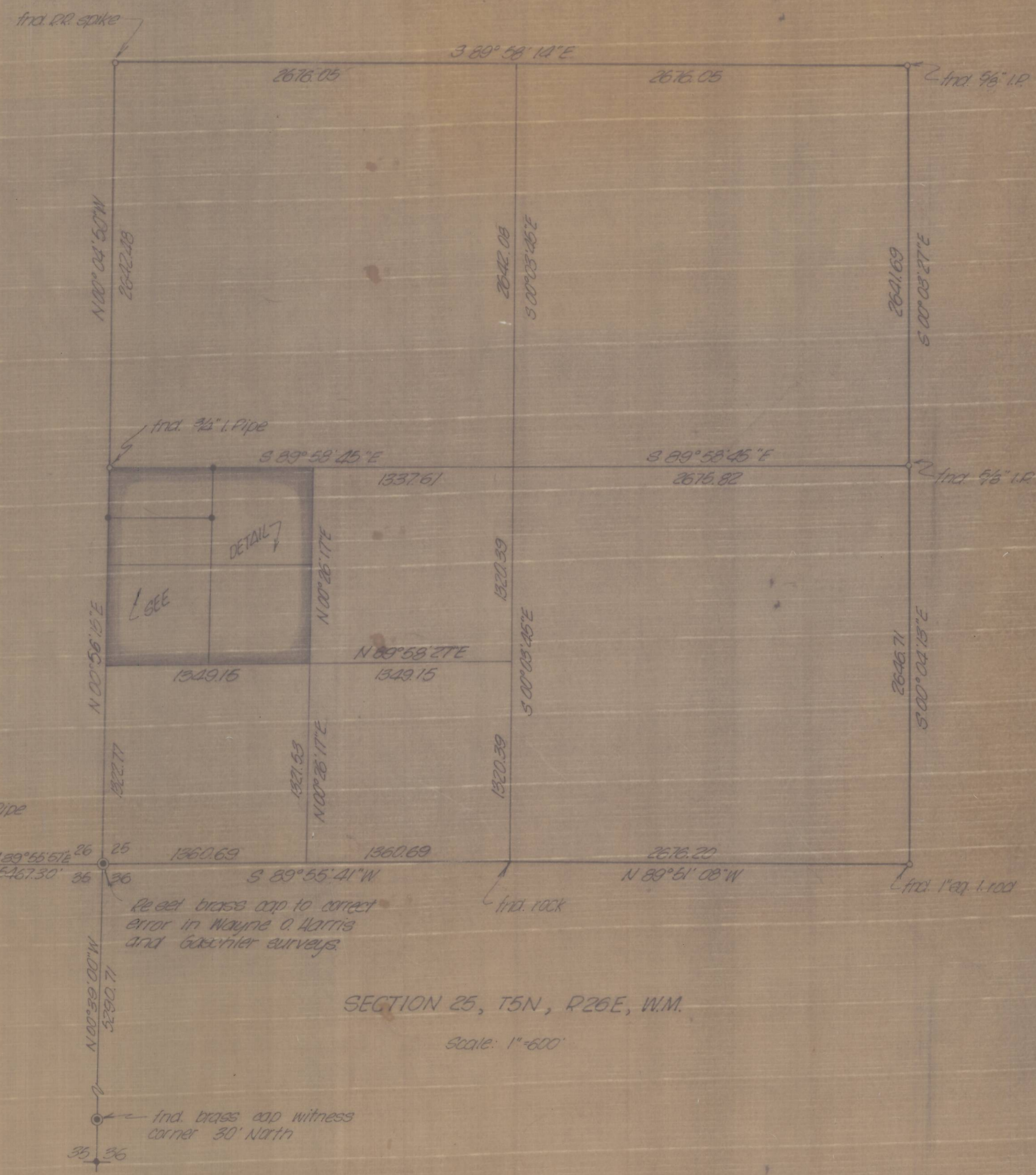


356

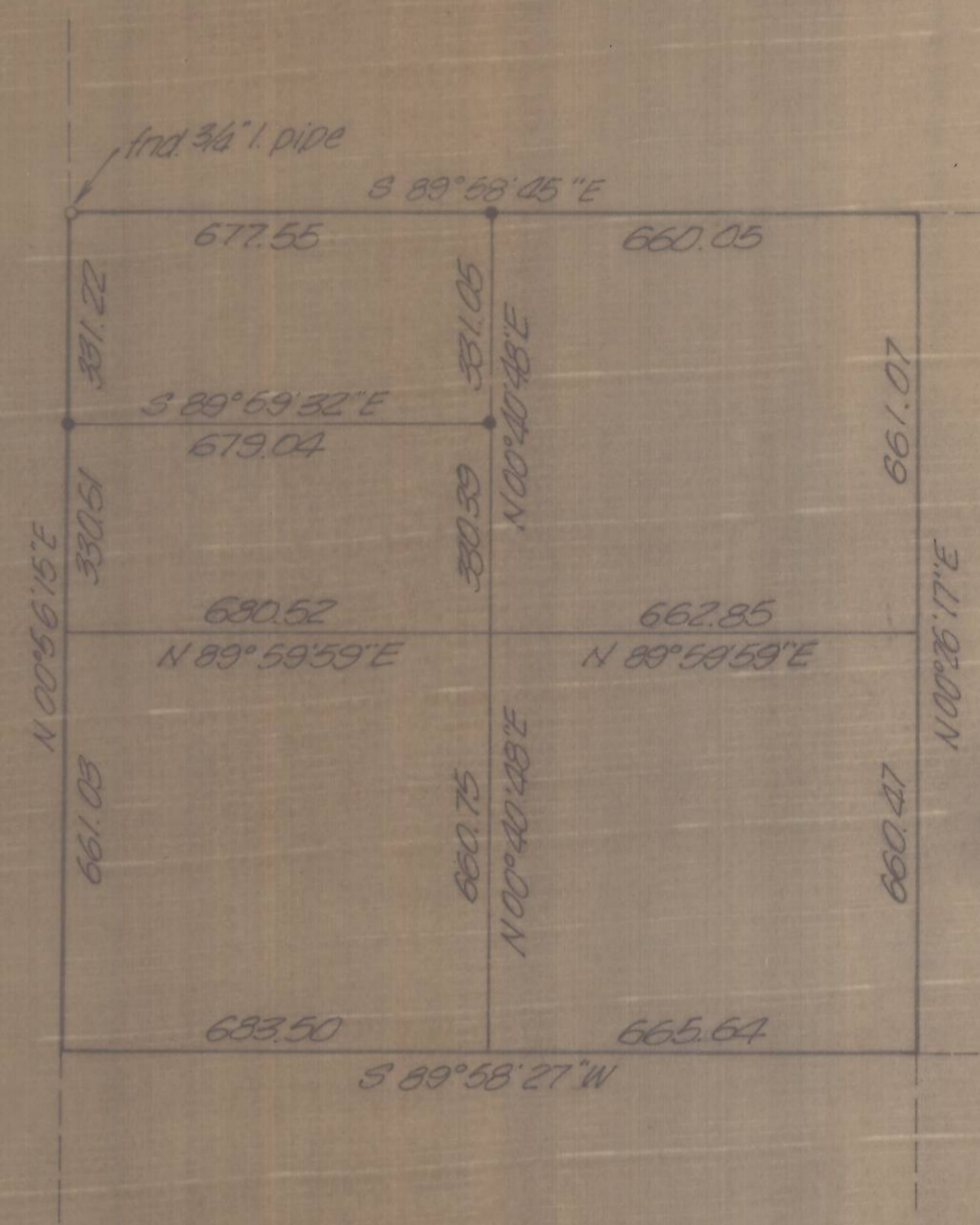


SECTION 25, T5N, R26E, W.M.

Scale: 1"=600'

Re-set brass cap to correct error in Wayne O. Harris and Gaschler surveys

frd. brass cap witness corner 30' North



DETAIL
1"=300'

NW 1/4, SW 1/4, Section 25,
T5N, R26E, W.M.

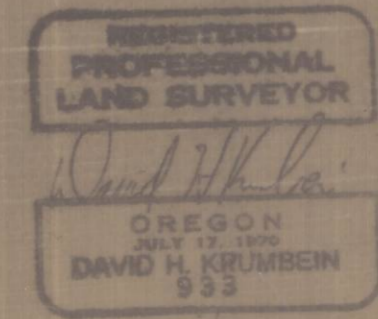
NOTE:

Bearings are based on Wayne O. Harris Co. survey, dated 6-13-15.

LEGEND:

• Denotes 5/8" I. pin w/ aluminum cap set

Revised 12-23-76
Corrected Dimensions 12-16-76



KRUMBEIN ENGINEERING CO. ENGINEERS - SURVEYORS - PLANNERS 216 S.E. 1st, Pendleton, Oregon	SCALE as shown
	DATE Dec. 3, 1976
Survey for PIONEER ESCROW NW 1/4, SW 1/4, Sec. 25, T5N, R26E, W.M.	DRN. BY D.H.K.
	CKD. BY D.H.K.
	DRNG. NO. 76-67C

C-152-K-356

C# 152K