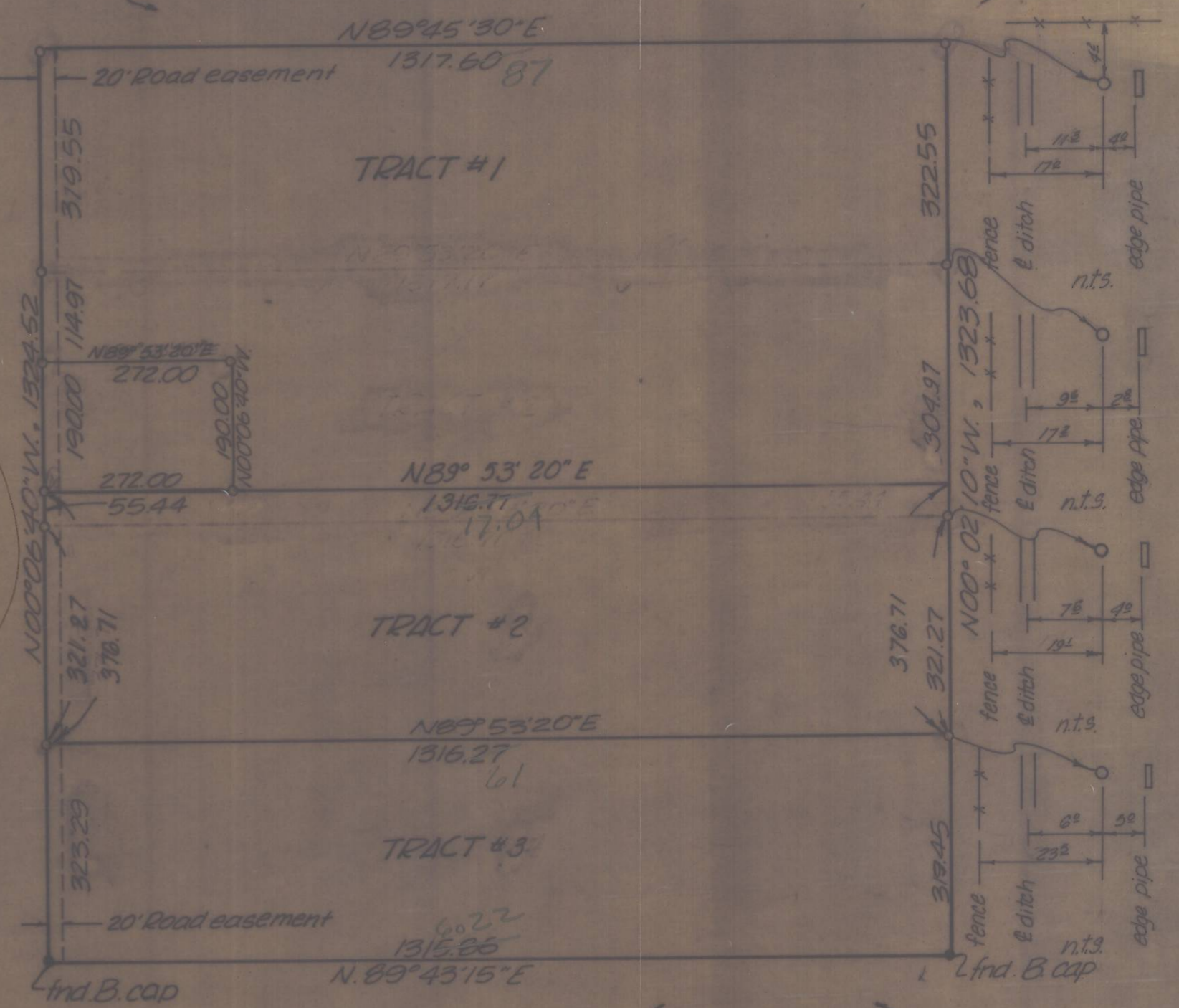
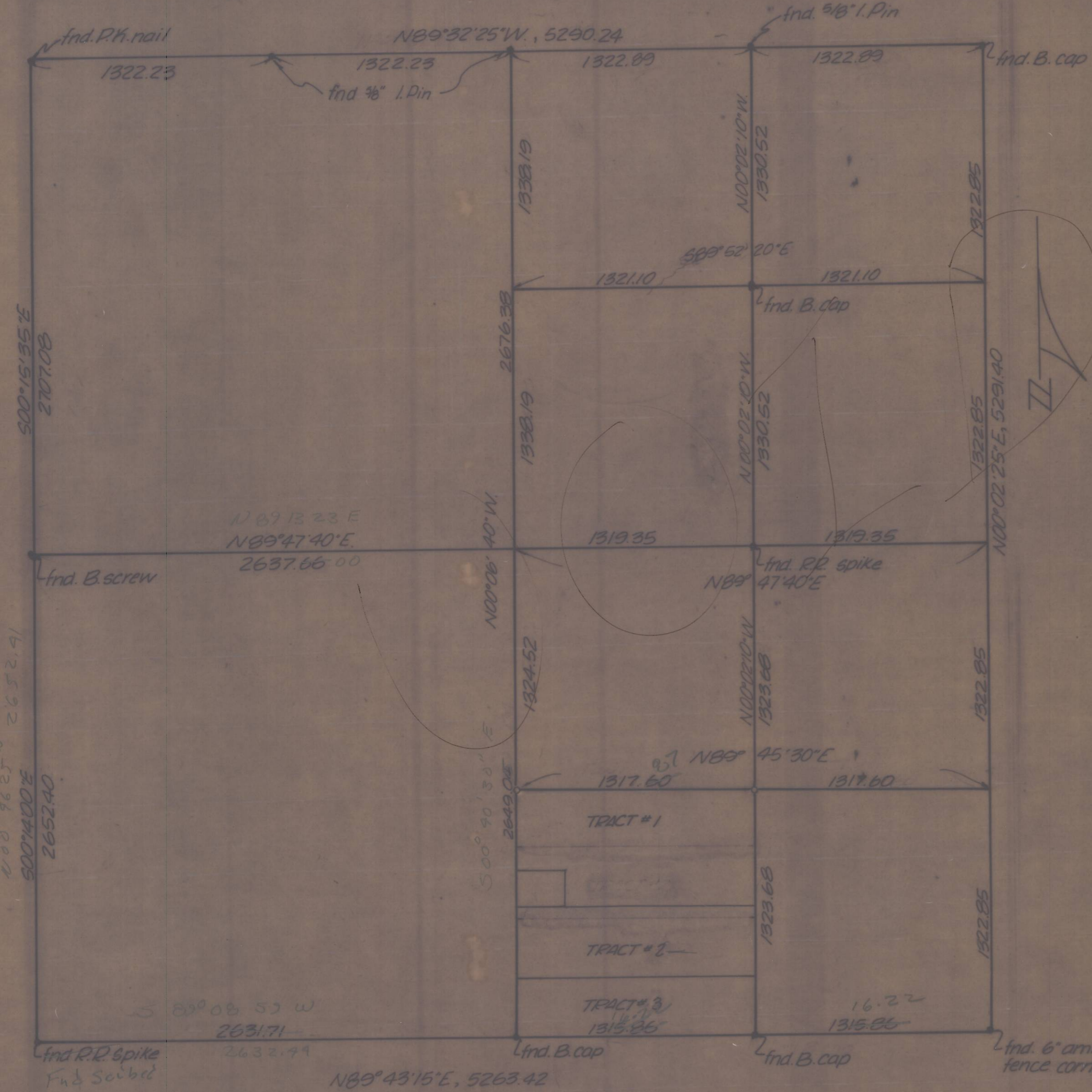


Break down details of "Section 15, T4N, R25E, W.M."

Detail of "S.W. 1/4, S.E. 1/4, Section 15, T4N, R25E, W.M."



SCALE 1"=200'

NOTE:  
Bearings based upon Krumbein  
Engineering's Survey for McVenzie.  
Drawing no. 65-C.

LEGEND:  
o Denotes set 5/8" Iron pin, unless  
noted otherwise.

100° 46' 25" W 2652.91  
 500° 15' 35" E 2707.08  
 500° 14' 00" E 2652.40

500° 40' 30" E 2649.04  
 100° 06' 40" W 2676.38

fnd. RR spike  
 fnd. Scriber  
 Stone  
 Ed. of RR's ditch  
 2-2-21

fnd. 6" ammo can at fence corner

SCALE 1"=500'

349

C-147-K-349

REGISTERED  
 PROFESSIONAL  
 LAND SURVEYOR  
 James V. Guisman  
 OREGON  
 JULY 22, 1977  
 JAMES H. BUISMAN  
 1997

Krumbein Engineering Co  
 ENGINEERS - SURVEYORS - PLANNERS  
 221 S. Main, Pendleton, Oregon  
 Survey for  
 GLEN MOORE  
 S.W. 1/4, S.E. 1/4, Section 15, T4N, R25E, W.M.

SCALE	As Shown
DATE	Mar. 2, 78
DRAWN BY	G.G.C.
CHECKED BY	J.L.C.
DRAWING NO.	78-188

Revised Mar. 13, 1978 - TAG

See Revis.  
1 Aug 78  
Pin to

JOB # 78-4-C-# 147K