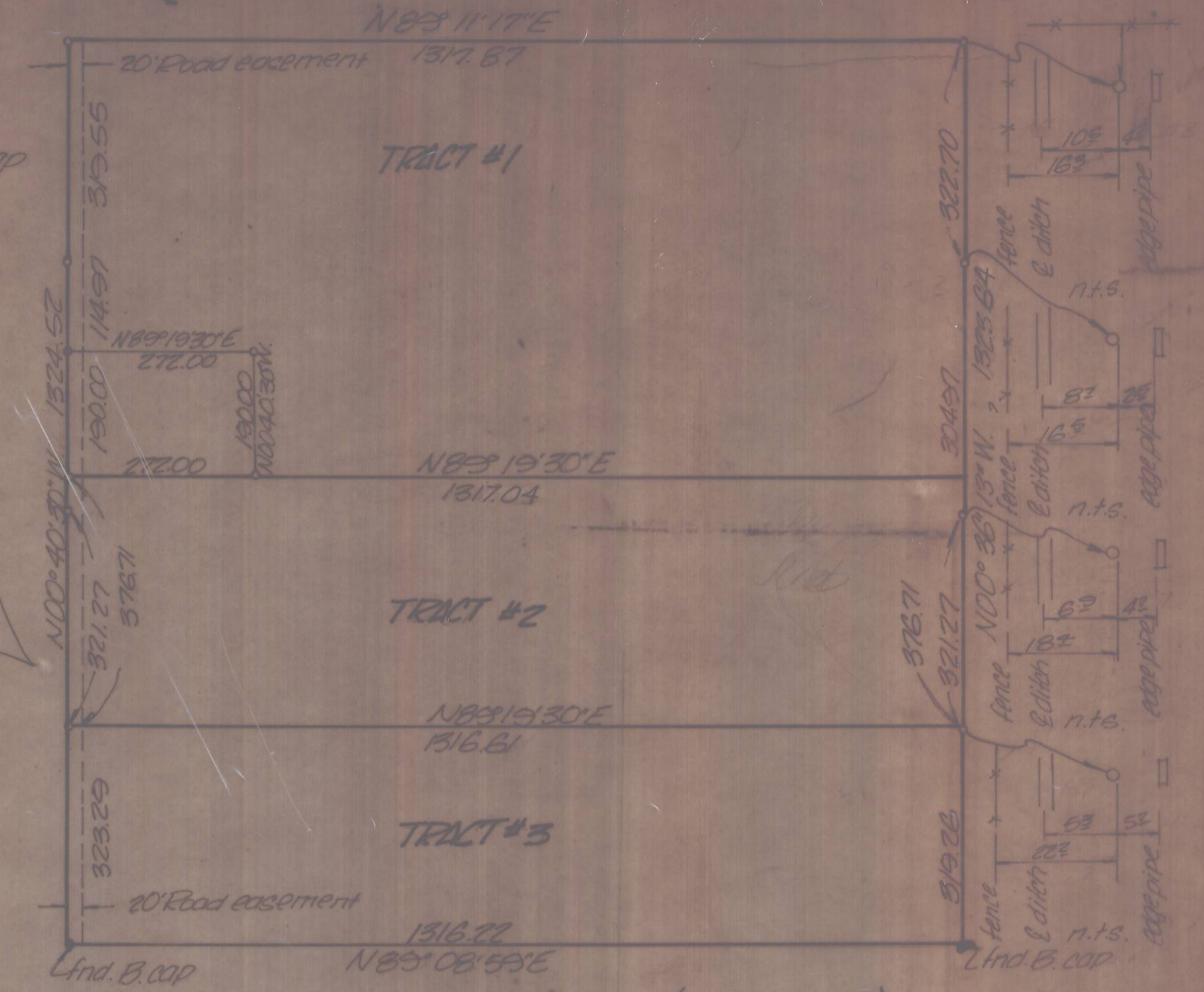
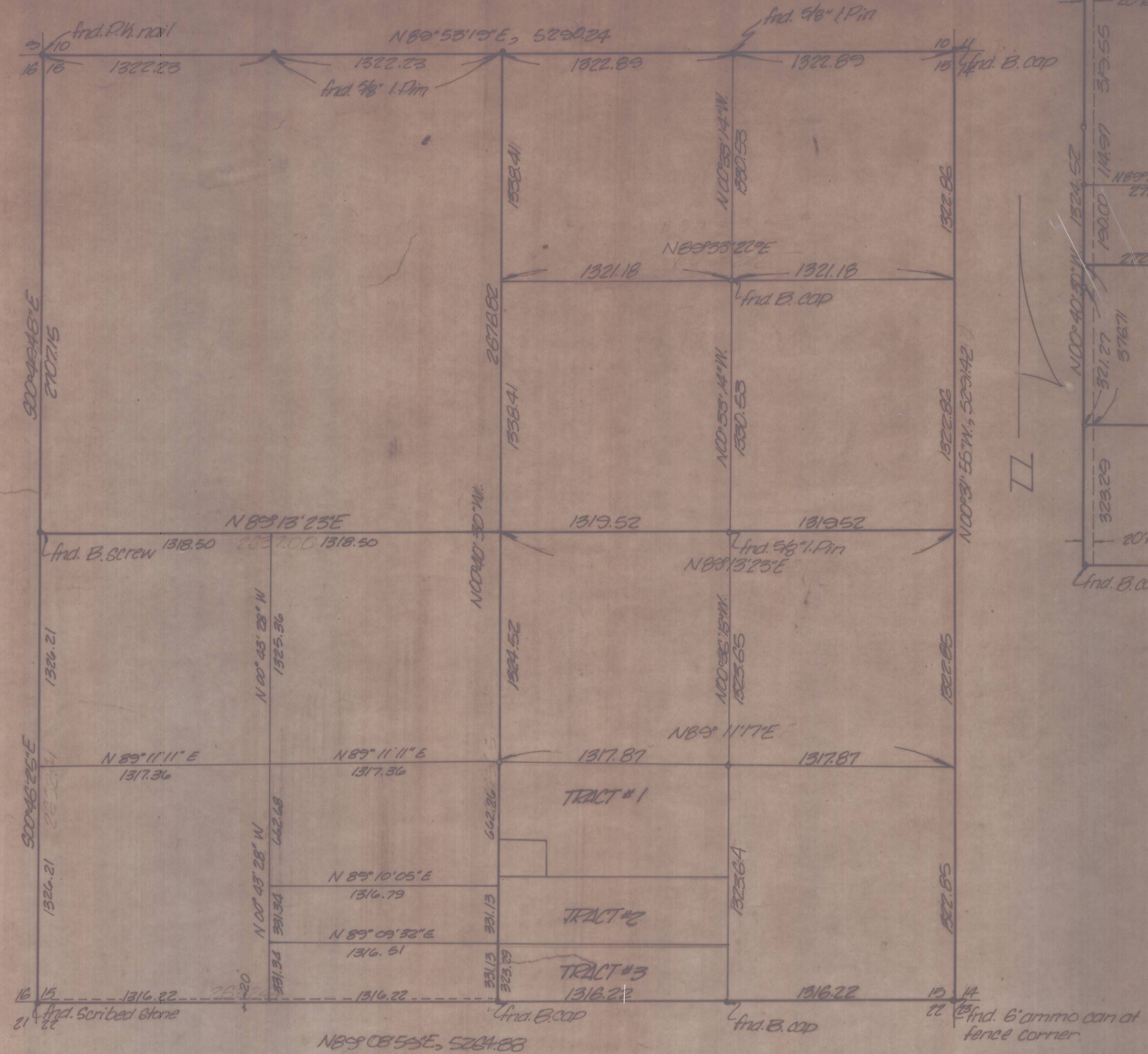


Break down details of "Section 15, T4N, R25E, W1M."

Detail of "SW 1/4, SE 1/4, Section 15, T4N, R25E, W1M."



NOTE:  
 Bearings shown are grid and distances shown are true, based on ties to N.G.S. Station 'Messner', GF-233333-48  
 Q = 100°34'24"  
 LEGEND:  
 ° Denotes 5/8" Iron pin unless noted otherwise.

Scale 1"=500'

REGISTERED PROFESSIONAL LAND SURVEYOR  
 David H. Krumben  
 OREGON JULY 17, 1970  
 DAVID H. KRUMBEIN 933

Additions, SW 1/4, Sec 15, T4N, R25E, W1M  
 Revised APR 23, 1978 - G.G.P.; A.J. 4.78; J.L.C.  
 KRUNBEIN ENGINEERING CO  
 ENGINEERS - SURVEYORS - PLANNERS  
 221 S. Main, Pendleton, Oregon  
 Survey for GLEN MOORE  
 SW 1/4, SE 1/4, Section 15, T4N, R25E, W1M  
 SCALE As Shown  
 DATE APR 27, 1978  
 DRN. BY G.G.P.  
 CKD. BY D.H.K.  
 DRNG. NO. 78-100

C-147-K-348

C-#7K Job # 78-40-C-7K