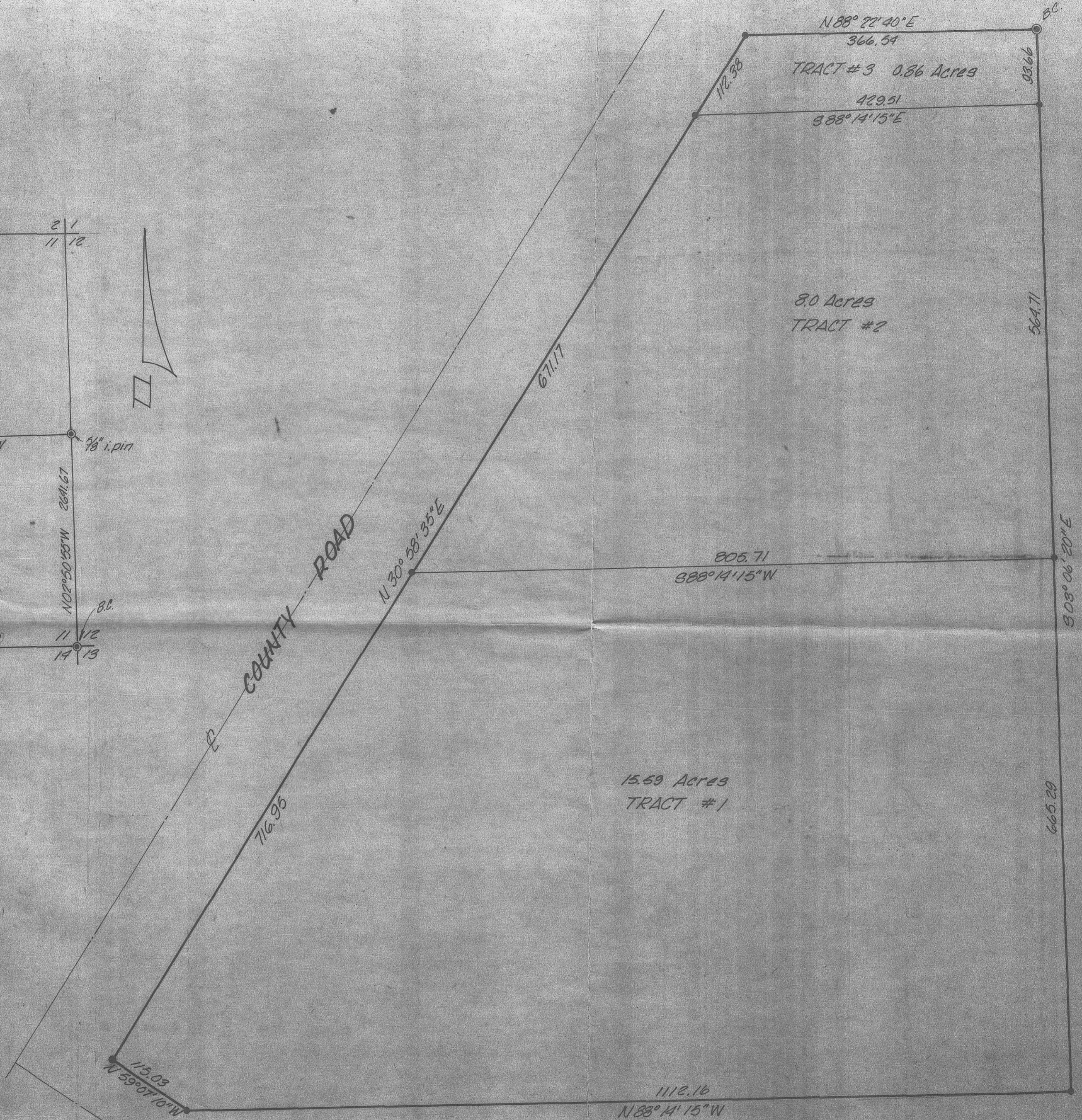


Section 11, T4N, R25E.  
Scale 1" = 1000'

NOTE: Bearings shown are grid.  
Distances shown are true.

LEGEND:

- Monument Pound
- set 3/8 in. iron pin



Scale: 1" = 100'

REGISTERED  
PROFESSIONAL  
LAND SURVEYOR  
*David H. Krumbein*  
OREGON  
JULY 17, 1970  
DAVID H. KRUMBEIN  
933

<b>KRUMBEIN ENGINEERING CO</b> ENGINEERS - SURVEYORS - PLANNERS 221 S. Main, Pendleton, Oregon	SCALE AS SHOWN
	DATE Aug 16, 1978
Survey for <b>THE PORT OF MORROW</b> Parcel in NE 1/4, NW 1/4, Sec 11, T4N, R25E W.M.	DRN BY TAG
	CHK BY DHK
	DRNG NO. 78-570

342  
C-110-K-