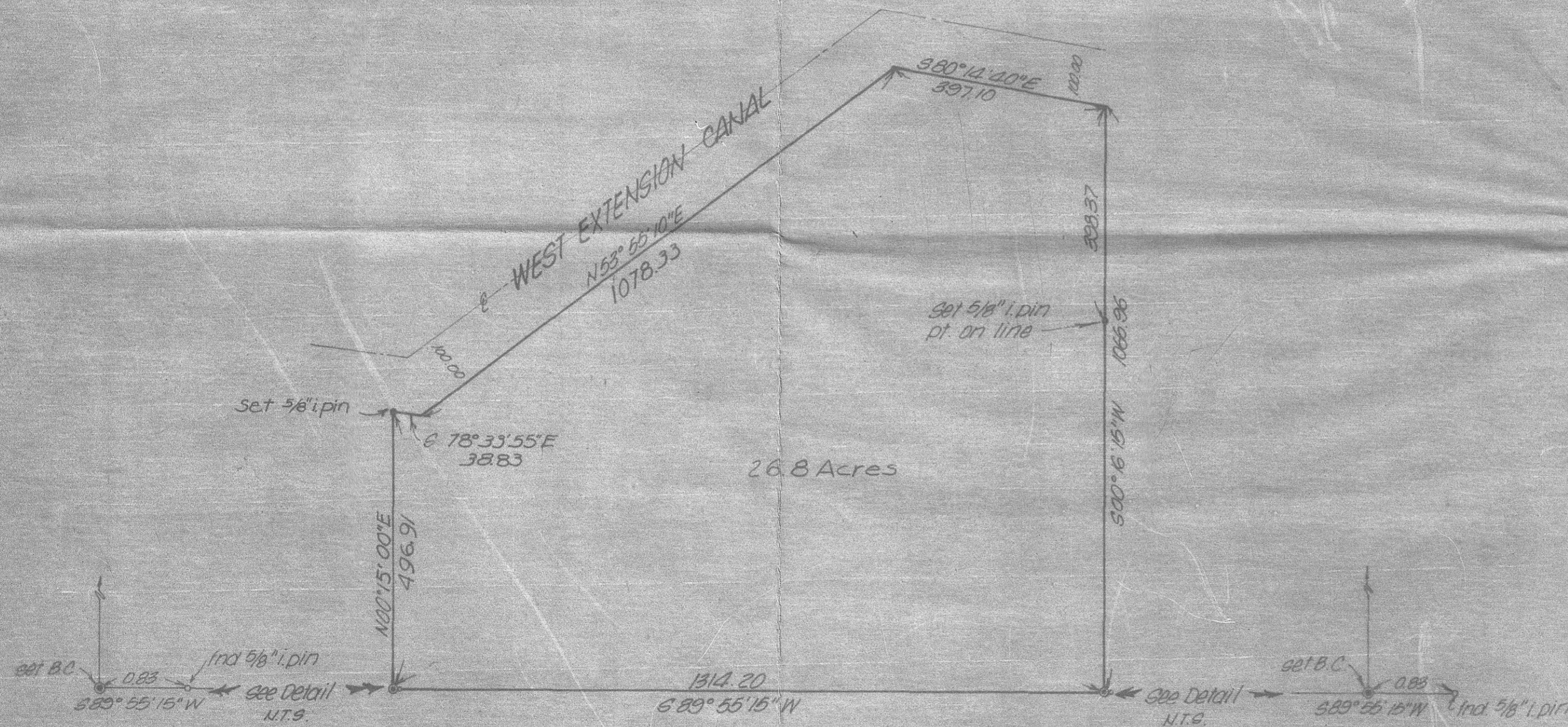


Section 14, T4N, R25E, W.M.
N.T.S.

Survey based on Wallulis & Associates, Inc. survey for A. Bratt, Section 14, T4N, R25E, W.M., dated February 13, 1977.



REGISTERED PROFESSIONAL LAND SURVEYOR
David H. Krumbein
OREGON
DAVID H. KRUMBEIN
933

Revised Oct. 31, 1977
K KRUMBEIN ENGINEERING CO
ENGINEERS - SURVEYORS - PLANNERS
221 S. Main, Portland, Oregon
Survey for
LEE DOCKEN
Parcel in the SW 1/4, SE 1/4, Sec 14, T4N, R25E, W.M.

SCALE 1" = 200'	TA G
DATE 01/3/1977	
DRAWN BY P.L.S.	
CHKD. BY J.L.C.	
PLAT NO. #77-56C	

C-107-K-338