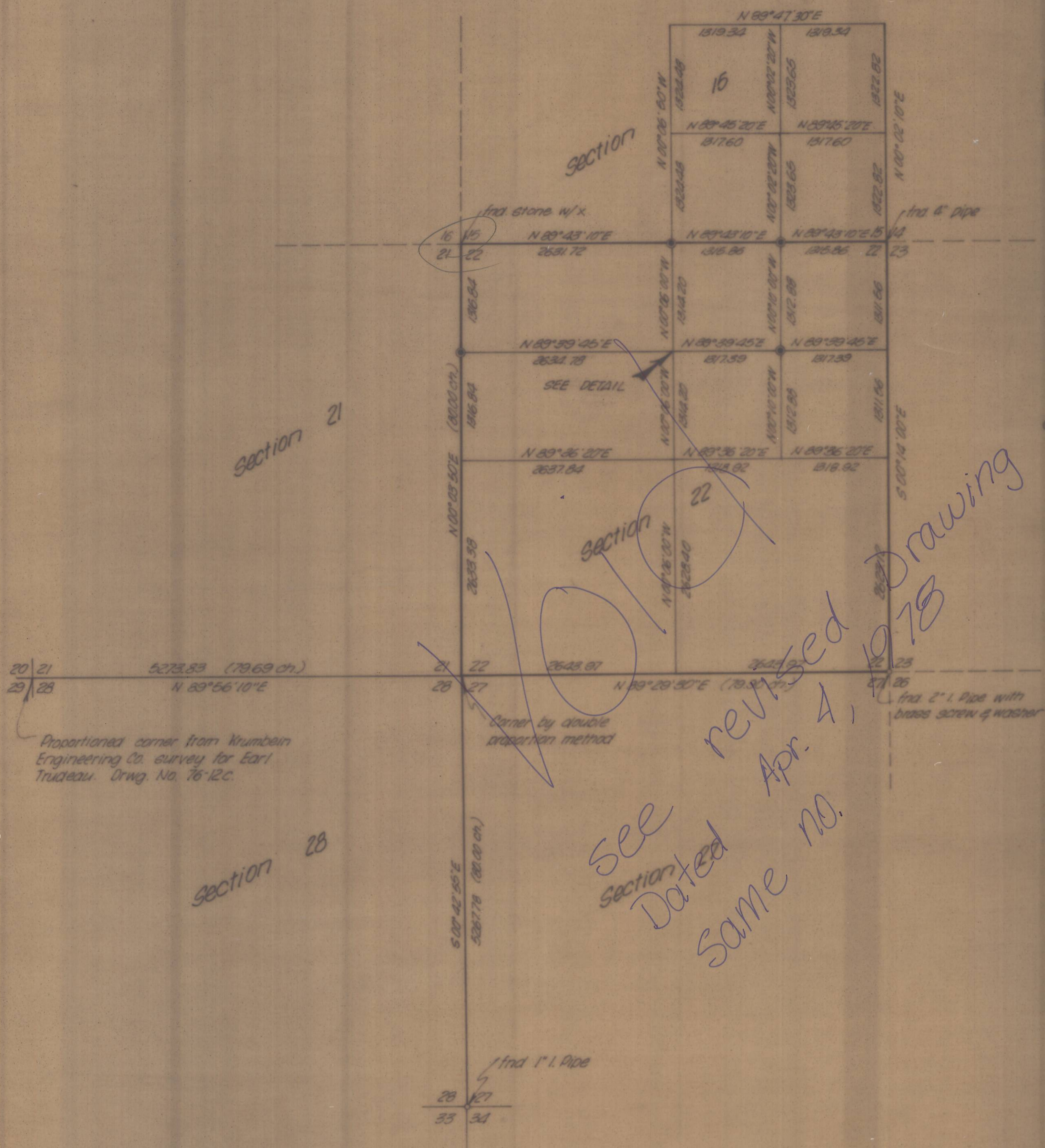
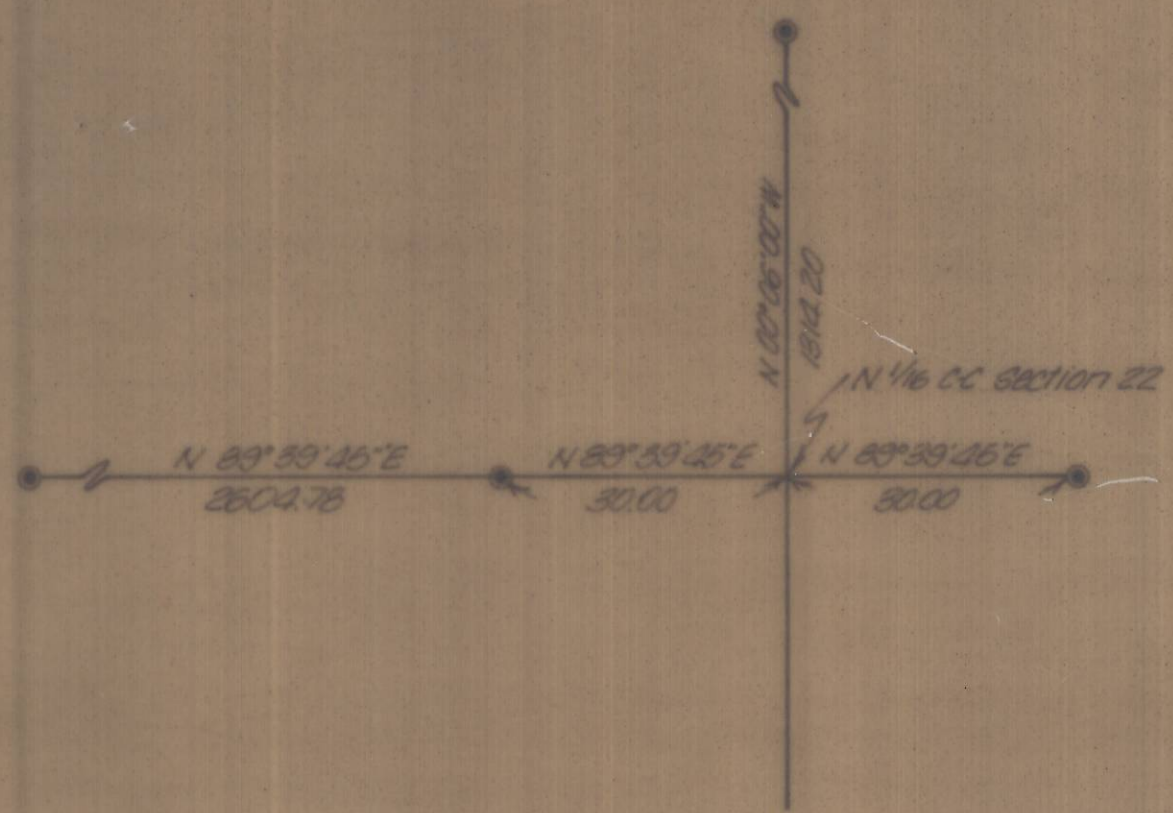


C-331



Proportioned corner from Krumbein Engineering Co. survey for Earl Trudeau. Orig. No. 76-12C.

*see revised Drawing Dated Apr. 4, 1978 Same no.*



DETAIL 1-20

NOTE:  
Bearings and distances shown are true, based on ties to N.G.S. station "Masonier". The S.E. 1/4 of Section 15 breakdown is based on a previous Krumbein Engineering Co. survey for McKenzie.

LEGEND:  
● Set brass cap

REGISTERED PROFESSIONAL LAND SURVEYOR  
*David H. Krumbein*  
OREGON  
DAVID H. KRUMBEIN  
933

**KRUMBEIN ENGINEERING CO.**  
ENGINEERS - SURVEYORS - PLANNERS  
216 S.E. 1st, Pendleton, Oregon

Survey for  
**ARNOLD BRAAT**  
Sections 15 & 22, T4N, R25E, W.M.

SCALE 1"=1000'  
DATE Nov. 26, 1976  
DRN. BY RLP.  
CKD. BY JRS.  
DRNG. NO. 76-66C

C-99-K-331

C-799-K