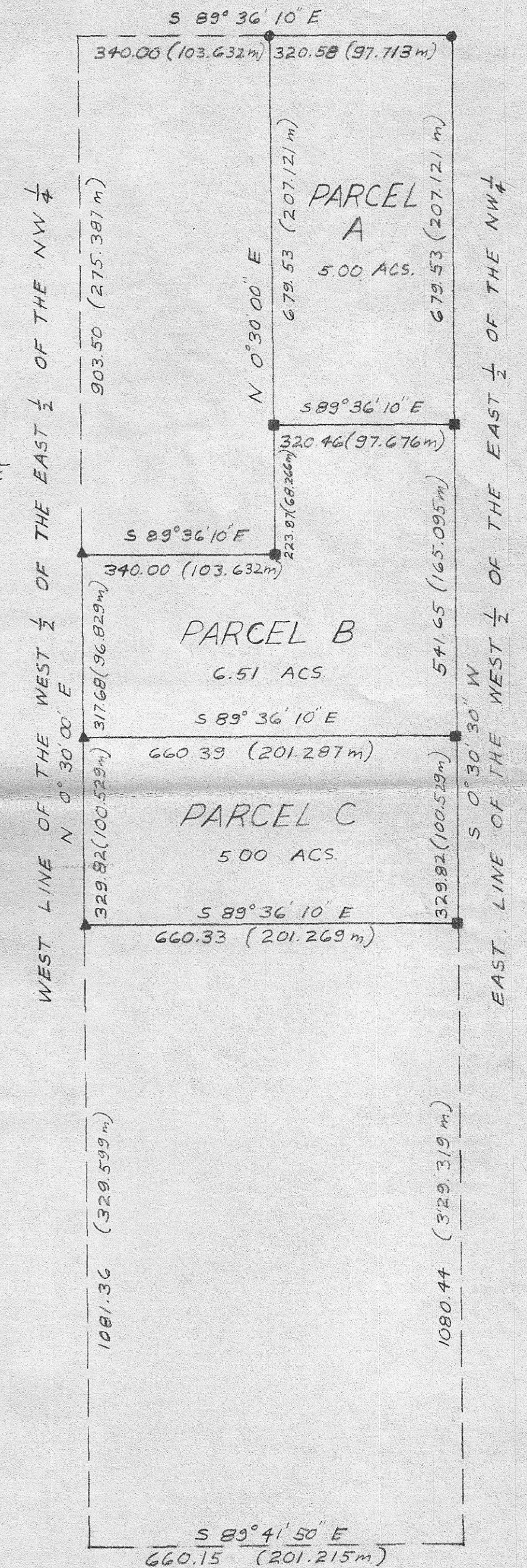


WEST 1/2, EAST 1/2, of NORTHWEST 1/4
SEC. 20, T.4N, R.25E.W.M.

SCALE 1" = 200'



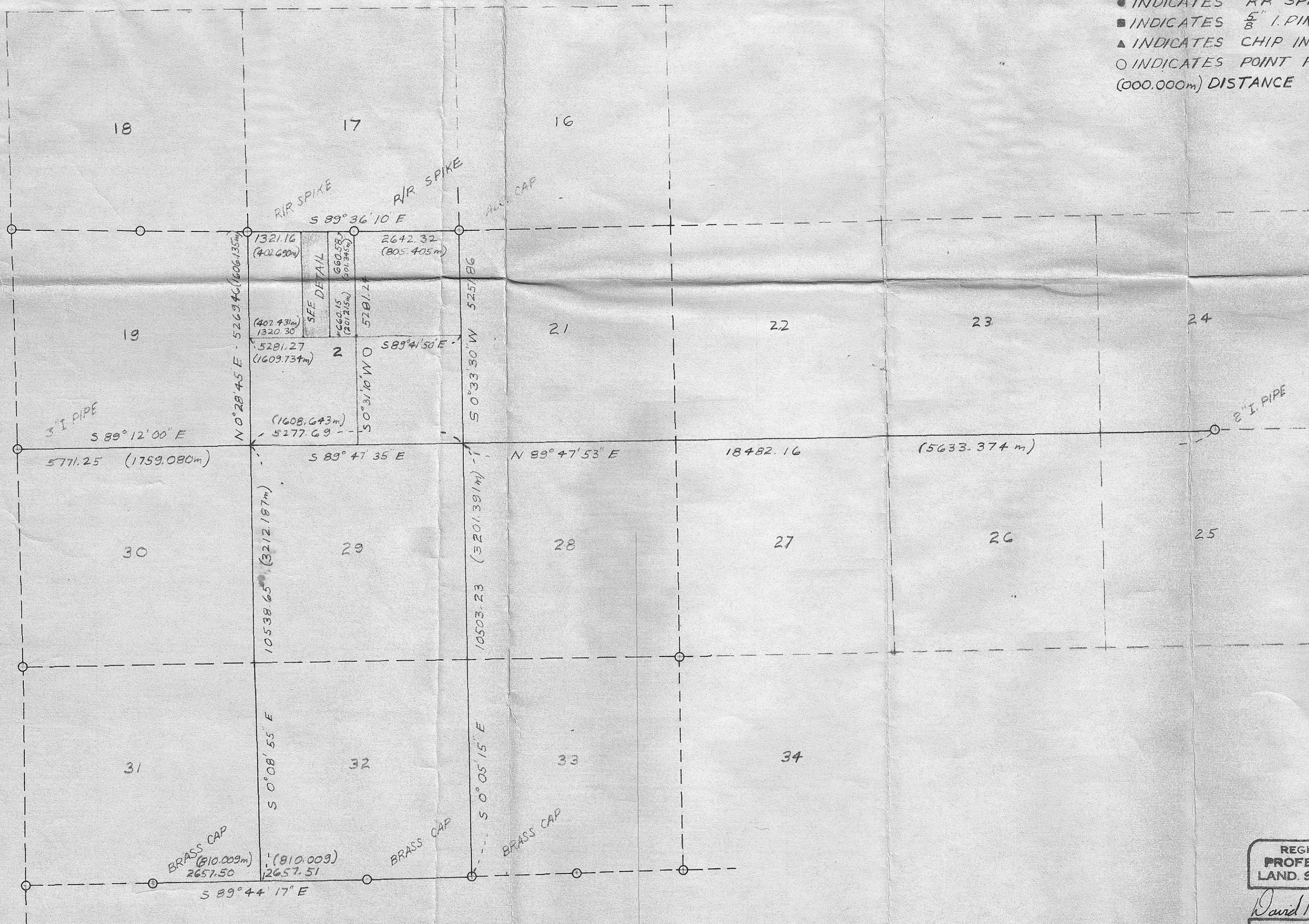
T.4N, R.25E.W.M.
SCALE 1" = 1000'



NOTES: BEARINGS ARE BASED UPON TIES TO N.G.S. 'MESSNER'. THOSE SHOWN ARE TRUE

BRASS CAPS ARE STAMPED "U.S. BUREAU OF RECLAMATION 1939"

- INDICATES RR SPIKE SET
- INDICATES 5/8" I. PIN SET
- ▲ INDICATES CHIP IN CONCRETE
- INDICATES POINT FOUND (000.000m) DISTANCE IN METERS



REGISTERED
PROFESSIONAL
LAND SURVEYOR

David H. Krumbain

OREGON
JULY 17, 1970
DAVID H. KRUMBEIN
933

KRUMBEIN ENGINEERING CO.
ENGINEERS - SURVEYORS - PLANNERS
216 S.E. 1st, Pendleton, Oregon

SURVEY FOR
EARL TRUDEAU
NW 1/4, SEC. 20, T.4N, R.25E.W.M.

SCALE AS SHOWN
DATE 1-14-76
DRN. BY DHK
CKD. BY JLC
DRNG. NO. 76-12C