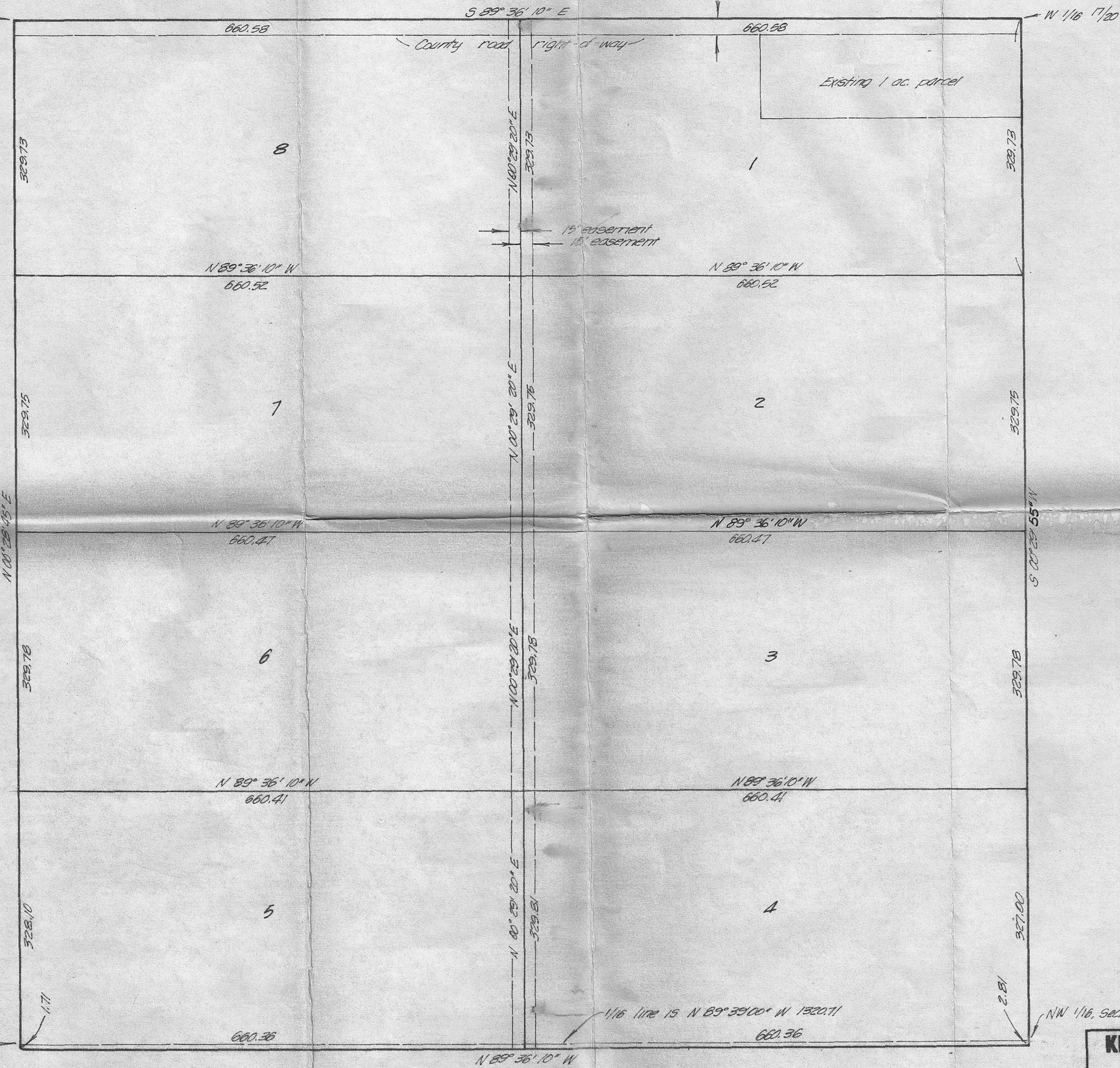
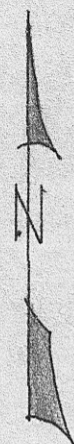


NW corner, Section 20



NOTE:
 1. See Krumbein Engr. Co. Drng. No. 76-15B for survey of exterior.
 2. All parcels are .500 acres.

C-87-K

KRUMBEIN ENGINEERING CO. ENGINEERS - SURVEYORS - PLANNERS 216 S.E. 1st, Pendleton, Oregon	SCALE 1" = 100'
	DATE 11/21/77
Parcels for EARL TRUDEAU NW 1/4, NW 1/4, Section 20, T4N, R25E, W1M.	DRN. BY JHB
	CKD. BY DLK
	DRNG. NO. 77-AC

C-87-K-323