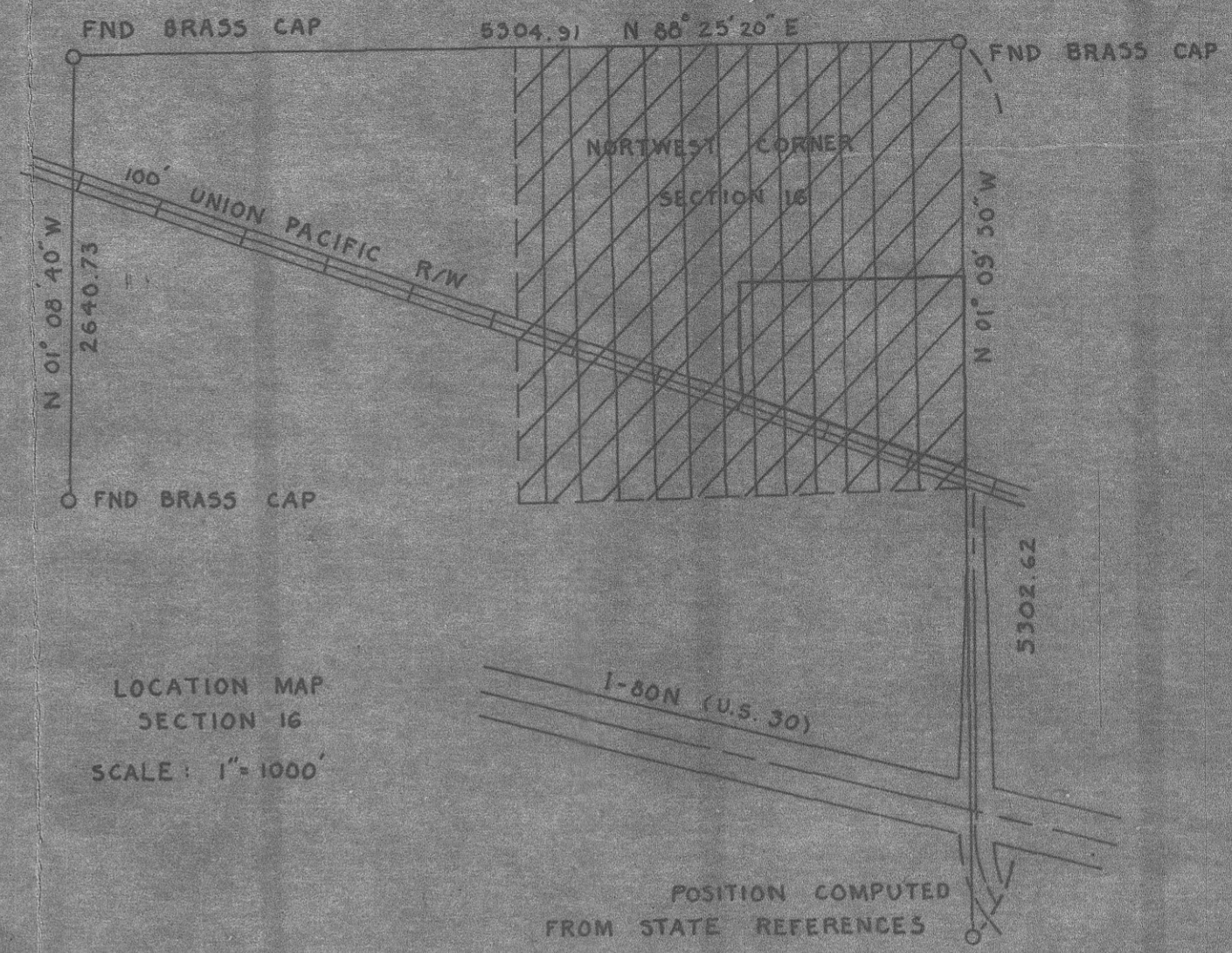


NORTHWEST CORNER
OF
SECTION 16, T.4N., R.26E., W.M.
SCALE: 1" = 200'



LOCATION MAP
SECTION 16
SCALE: 1" = 1000'



BEARINGS SHOWN ARE BASED UPON TIES TO N.O.S. STATION "MOLE". THOSE SHOWN ARE TO OREGON NORTH ZONE GRID TO CONFORM WITH ADJACENT PROPERTIES. DISTANCES SHOWN ARE GROUND.

REGISTERED
PROFESSIONAL
LAND SURVEYOR
David H. Krumbein
OREGON
JULY 7, 1979
DAVID H. KRUMBEIN
933

WAYNE HARRIS CO., INC.
PROPERTY SURVEY
FOR
EASTERN OREGON FARMING INC.
N.E. CORNER SECTION 16, T.4N., R.26E.
W.M.

SCALE	DATE	DRN BY	DRNG. NO.
AS SHOWN	3/19/73	L.L.	73-321 C

C-25-K-301