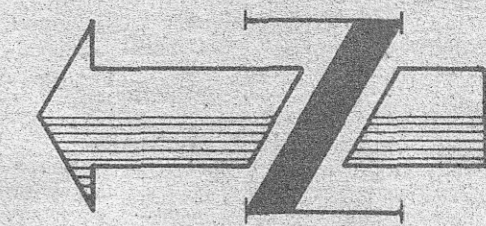
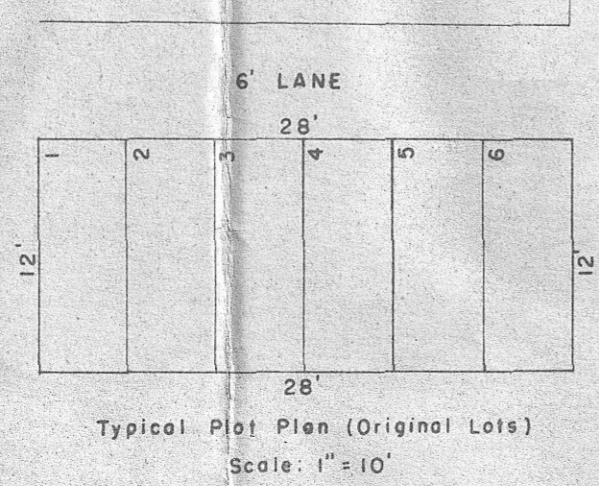
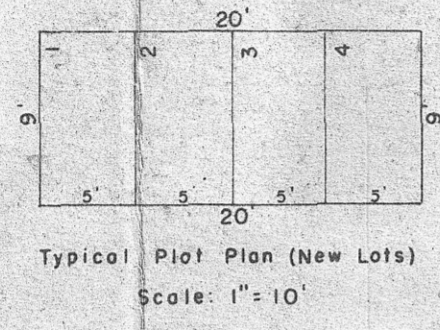
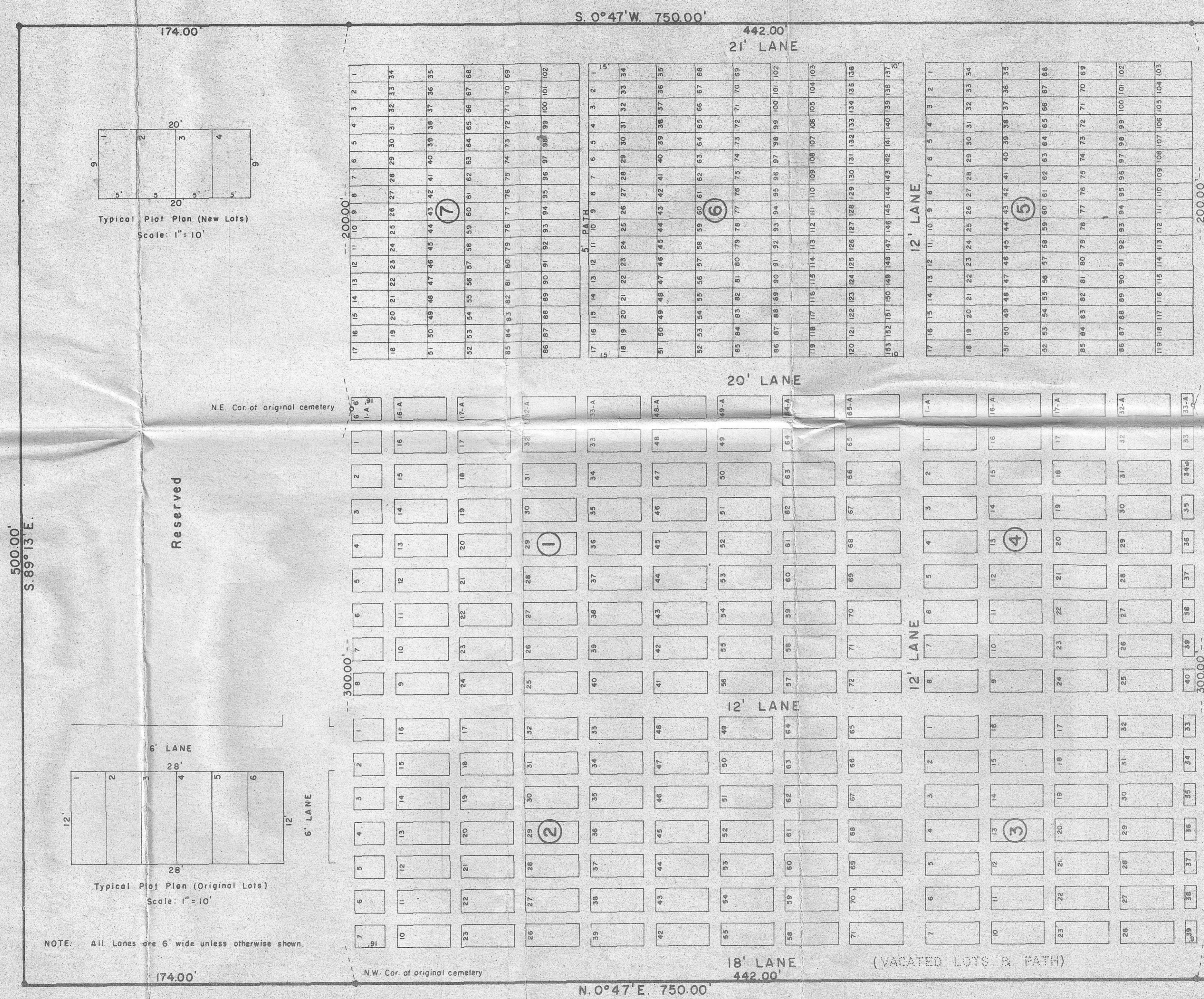


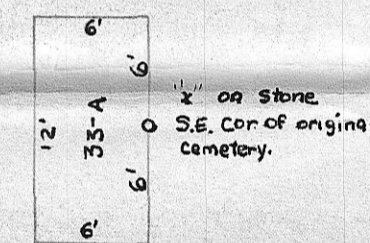
**AMENDED PLAT OF  
HIGH VIEW CEMETERY**  
IN THE W1/2 SE 1/4 SEC.4, T.1S.,R.24E.,W.M.  
MORROW COUNTY, OREGON  
SCALE 1"=40.0'



INITIAL POINT  
2"X36" Galv. I.P.



NOTE: All Lanes are 6' wide unless otherwise shown.



Reserved

Reserved

Reserved

C-16-K-297