




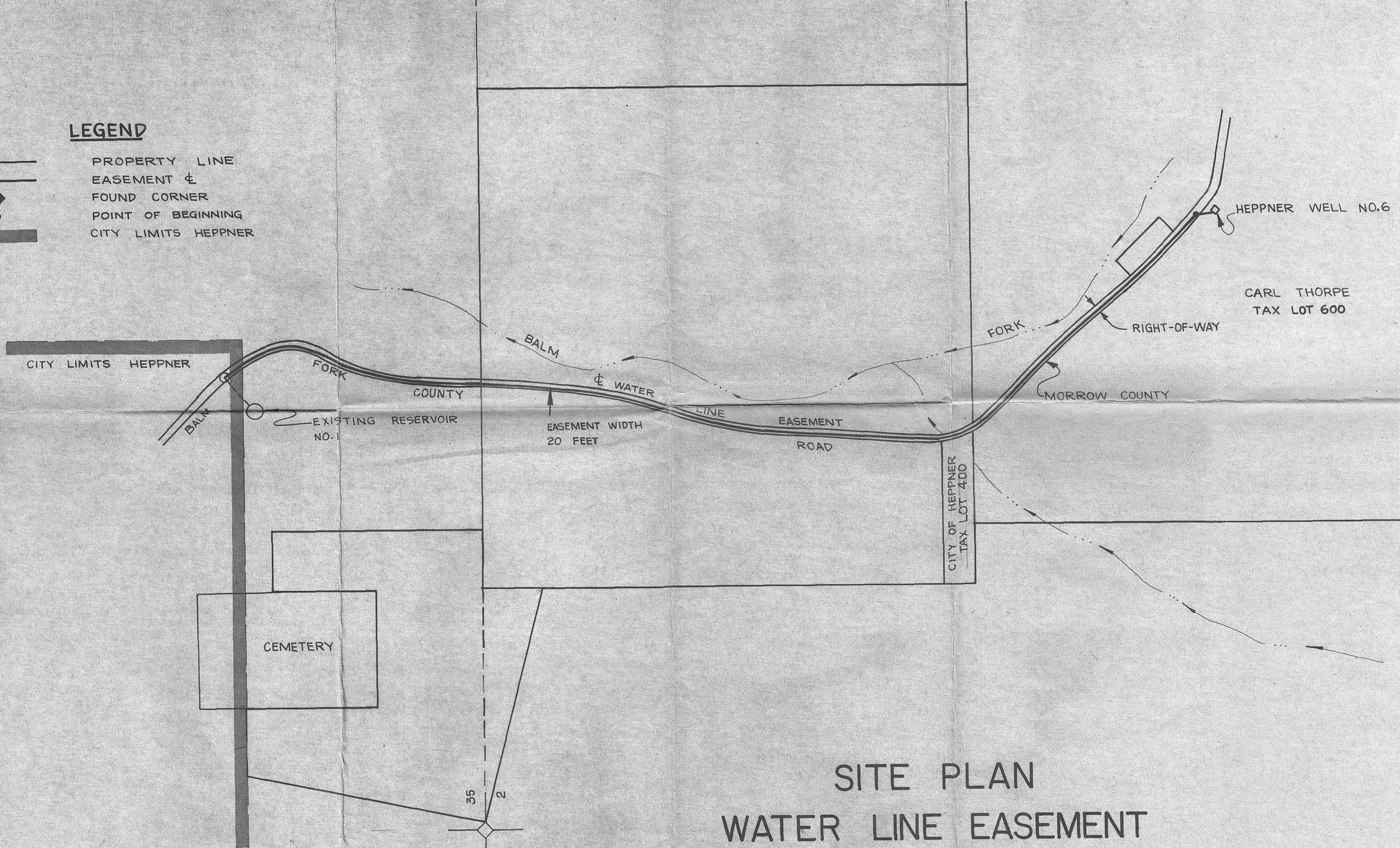
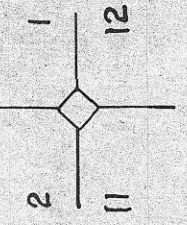
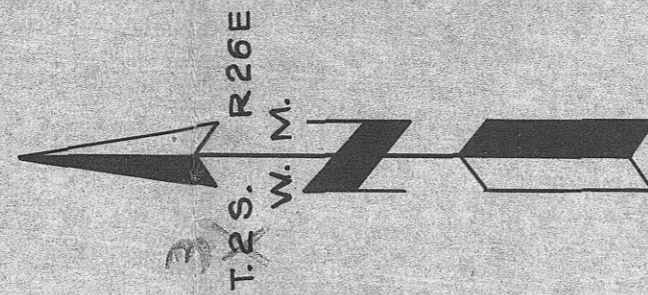


EASEMENT & DESCRIPTION

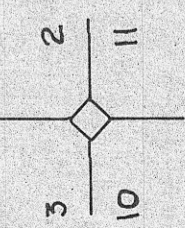
COMMENCING AT THE INTERSECTION OF THE BALM FORK COUNTY ROAD AND THE EXISTING 12 INCH TRANSMISSION LINE FROM THE CITY OF HEPPNER'S RESERVOIR NO. 1; THENCE SOUTHERLY ALONG THE WEST BOUNDARY OF THE SAID COUNTY ROAD TO THE CITY OF HEPPNER'S WELL NO. 6.

LEGEND

-  PROPERTY LINE
-  EASEMENT &
-  FOUND CORNER
-  POINT OF BEGINNING
-  CITY LIMITS HEPPNER



**SITE PLAN
WATER LINE EASEMENT**



CITY OF HEPPNER WATER SYSTEM IMPROVEMENTS		
EASEMENT PLAT		
SCALE: 1" = 400'	STEPHEN C. ANDERSON AND ASSOCIATES LA GRANDE, OREGON	SHEET NO. 1
DATE: OCT. '74		

