

**BASIS OF BEARING**

SOLAR OBSERVATION

S W CORNER SECTION 33  
 JULY 1, 1975  
 LATITUDE = 45° 10' 17"  
 DECLINATION = 23° 07' 23.4" N  
 VERTICAL ANGLE = 32° 39' 24"  
 MEAN DECLINATION = 20° E

**LEGEND**

- FOUND G.L.O. CORNER; SET 10" x 3/8" SPIKE
- ⊙ FOUND G.L.O. CORNER; SET 2 1/2" x 30" IRON PIPE WITH BRASS CAP
- ⊙ SET 2 1/2" x 30" IRON PIPE WITH BRASS CAP AT PROPORTIONATE DISTANCE
- ( ) RECORD BEARING AND DISTANCE; DISTANCE IN CHAINS
- 265 M METRIC VALUE
- P PRIVATELY OWNED LAND

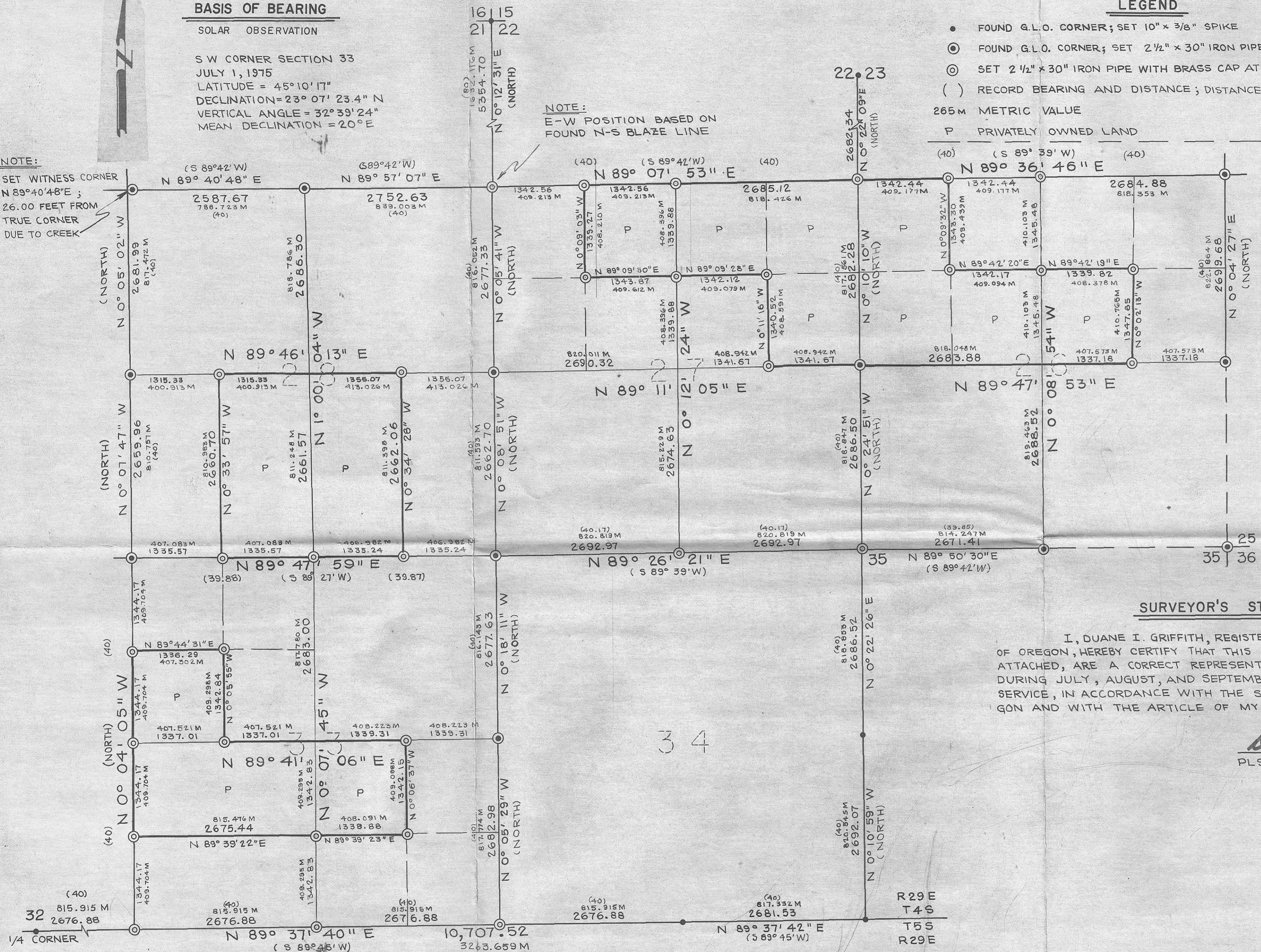
**NOTE:**

SET WITNESS CORNER  
 N 89° 40' 48" E;  
 26.00 FEET FROM  
 TRUE CORNER  
 DUE TO CREEK

**NOTE:**  
 E-W POSITION BASED ON  
 FOUND N-S BLAZE LINE

**NOTE:**

FOR MONUMENTATION RECORDS  
 SEE MONUMENTATION SHEETS  
 FILED SEPARATELY



**SURVEYOR'S STATEMENT**

I, DUANE I. GRIFFITH, REGISTERED LAND SURVEYOR IN THE STATE OF OREGON, HEREBY CERTIFY THAT THIS PLAT AND THE NOTES HEREON, OR ATTACHED, ARE A CORRECT REPRESENTATION OF THE SURVEY I MADE DURING JULY, AUGUST, AND SEPTEMBER, 1975, FOR THE U.S. FOREST SERVICE, IN ACCORDANCE WITH THE STATUTES OF THE STATE OF OREGON AND WITH THE ARTICLE OF MY CONTRACT.

*Duane I. Griffith*  
 PLS 644

REGISTERED  
 PROFESSIONAL  
 LAND SURVEYOR

*Duane I. Griffith*

OREGON  
 JULY 10, 1974  
 DUANE I. GRIFFITH  
 644

**DESCRIPTIONS OF FOREST SERVICE LANDS**

**SECTION 26**

- S 1/2:
- NE 1/4 OF THE NW 1/4:
- N 1/2 OF THE NE 1/4:
- SE 1/4 OF THE NE 1/4:

**SECTION 27**

- S 1/2:
- SW 1/4 OF THE NE 1/4:
- S 1/2 OF THE NW 1/4:
- NW 1/4 OF THE NW 1/4:

**SECTION 28**

- N 1/2:
- E 1/2 OF THE SE 1/4:
- W 1/2 OF THE SW 1/4:

**SECTION 33**

- NE 1/4:
- S 1/2 OF THE SE 1/4:
- NE 1/4 OF THE SE 1/4:
- S 1/2 OF THE SW 1/4:
- N 1/2 OF THE NW 1/4:
- SE 1/4 OF THE NW 1/4:

**SECTION 34**

ENTIRE SECTION

**BAGETT, GRIFFITH & ASSOCIATES**  
 La Grande, Oregon  
 Map of Survey

SECTIONS 26-27-28-33  
 T4S R29E W.M.

MORROW COUNTY, OREGON

|              |                          |
|--------------|--------------------------|
| SURVEYED FOR | UMATILLA NATIONAL FOREST |
| SURVEYED BY  | DUANE I. GRIFFITH        |