

Fnd B.C. M.C.
32.7' EAST
Sec. Line
U.S. 1975

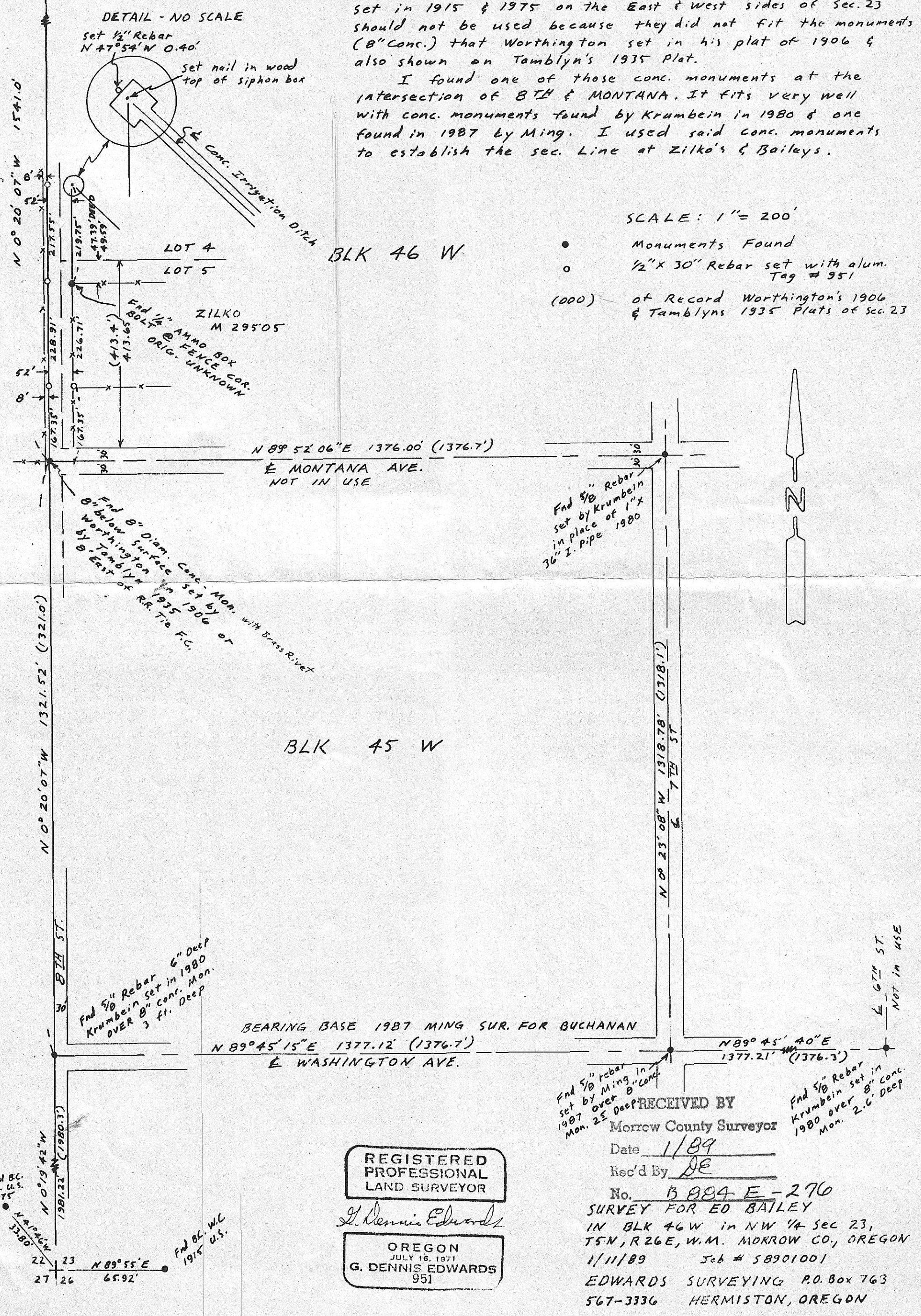
NARRATIVE: The purpose of this survey is to set points on the section line 52 feet East of the sec. line at the North & South corners of ZILKO-M29505 & at the North Cor. of ED BAILEY, which is the E of a conc. ditch, to see how the new road & fences lay in relation.

A survey by McCulloch-Bryant in the late 1970's for the U.S. Corps. Engineers concluded that U.S. B.C. Monuments set in 1915 & 1975 on the East & West sides of Sec. 23 should not be used because they did not fit the monuments (8" Conc.) that Worthington set in his plat of 1906 & also shown on Tamblin's 1935 Plat.

I found one of those conc. monuments at the intersection of BTH & MONTANA. It fits very well with conc. monuments found by Krumbein in 1980 & one found in 1987 by Ming. I used said conc. monuments to establish the sec. line at Zilko's & Baileys.

SCALE: 1" = 200'

- Monuments Found
- 1/2" x 30" Rebar set with alum. Tag # 951
- (000) of Record Worthington's 1906 & Tamblin's 1935 Plats of Sec. 23



6-884-9