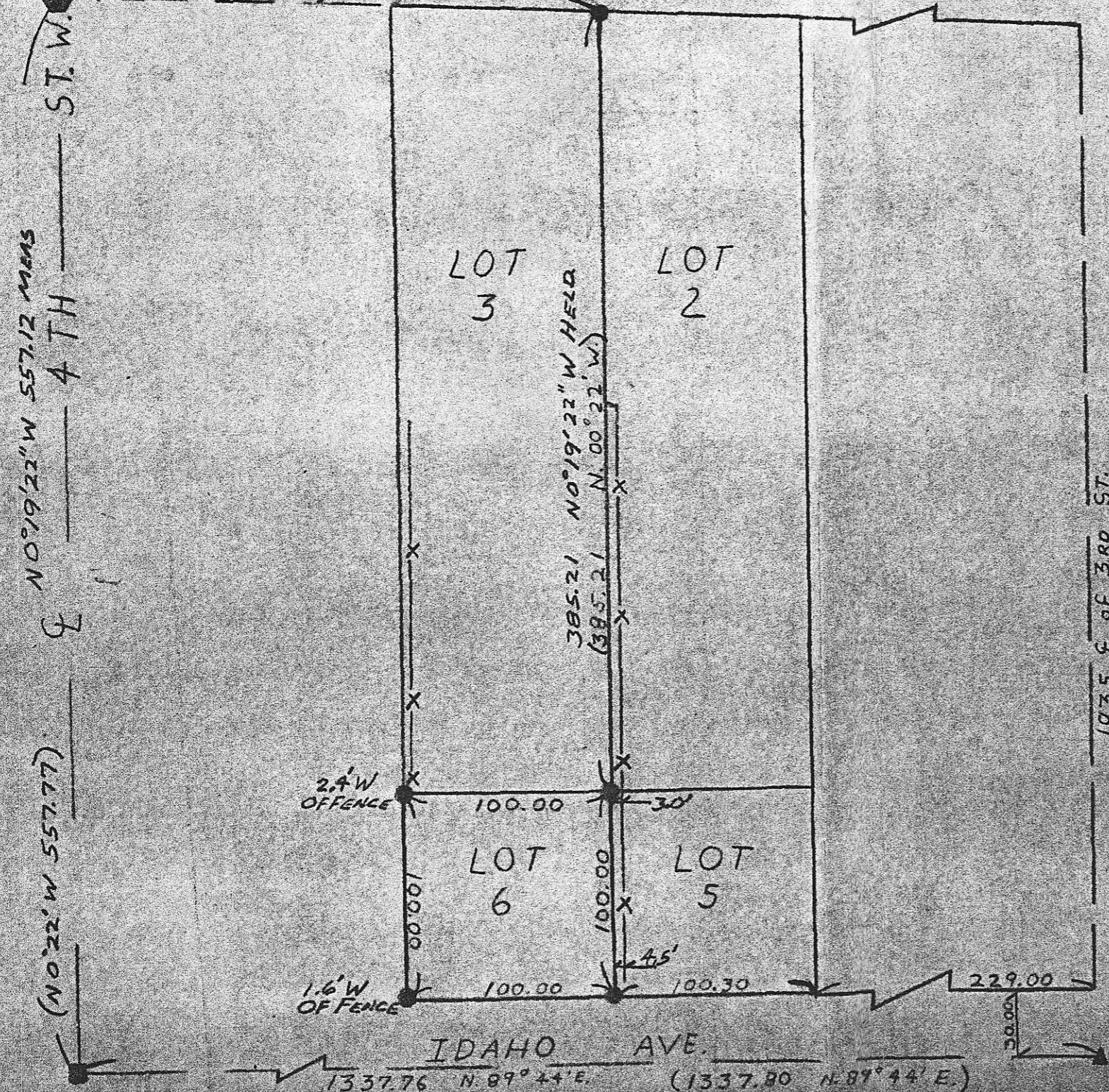


E O W R I N R R

FND. 1" IRON PIPE
0.5 DEEP (S 87° 51' E 1009.46) HELD.



NARRATIVE

THE PURPOSE OF THIS SURVEY WAS TO SET THE CORNERS FOR LOT 6 AND THE NORTHWEST CORNER OF LOT 2, BLY 21 W AS SHOWN ON CECIL H. STORM'S FEB 27TH, 1948 REPLAT OF BLOCKS 7 W, 14 W, & 21 W. THIS REPLAT WAS REVIEWED & SIGNED BY H. TAMBLYN AND MAKES REFERENCE TO CONCRETE MONUMENTS SHOWN ON HIS 1935 PLAT WHICH WAS A REPRESENTATION OF WORTHINGTON'S 1904 PLAT. IN 1980 DAVE KRUMBEIN FOUND THE CONCRETE MONUMENT AT 3RD & IDAHO & SET A 5/8" IRON ROD WITH ALUMINUM CAP OVER IT. AT THE E OF 4TH & IDAHO, WALT CRAMER FOUND THE ORIGINAL CONCRETE MONUMENT & SET A 1" X 20" IRON ROD OVER IT, DEC. 1981, MORROW CO. SURVEY NO. B-491-K. I FOUND THE 1" IRON PIPE AT THE E OF 4TH & SOUTH RIGHT OF WAY OF S. MAIN ST. IT WAS USED FOR DISTANCE TO NORTHWEST CORNER OF LOT 2. BEARING BASIS IS E OF IDAHO AS SHOWN.

- DISTANCES & ANGLES MEASURED WITH PERTAX 10 SECOND TOTAL STATION. (000) CECIL H. STORM'S FEB 27TH 1948 REPLAT
- SET 5/8" X 24" I.R. CAP MARKED LS 1861
 - ▲ FND 5/8" I.R. OVER CONC MON IN 3 1/2" I.D. PIPE WITH ALUMIN CAP MKD PLS 933
 - FND 1" I.R. OVER CONC. MONUMENT

R & M SURVEYORS & CONSULTANTS, INC.
P. O. BOX 709 IRRIGON, ORE. 922-3093

SURVEY FOR
IRRIGON MOBIL
COURT
SEC. 24, T. 5 N.
R. 26 E. W. M.
DATE: 4-11-96
DRN BY: KJM
SCALE: 1/2" = 100'

REGISTERED
PROFESSIONAL
LAND SURVEYOR

Earl D. Ming

OREGON
DEC. 14, 1979
EARL D. MING
1957

RECEIVED BY
Morrow County Surveyor
Date 6/3/86
Rec'd By MLD
No. B-813-K-296

