

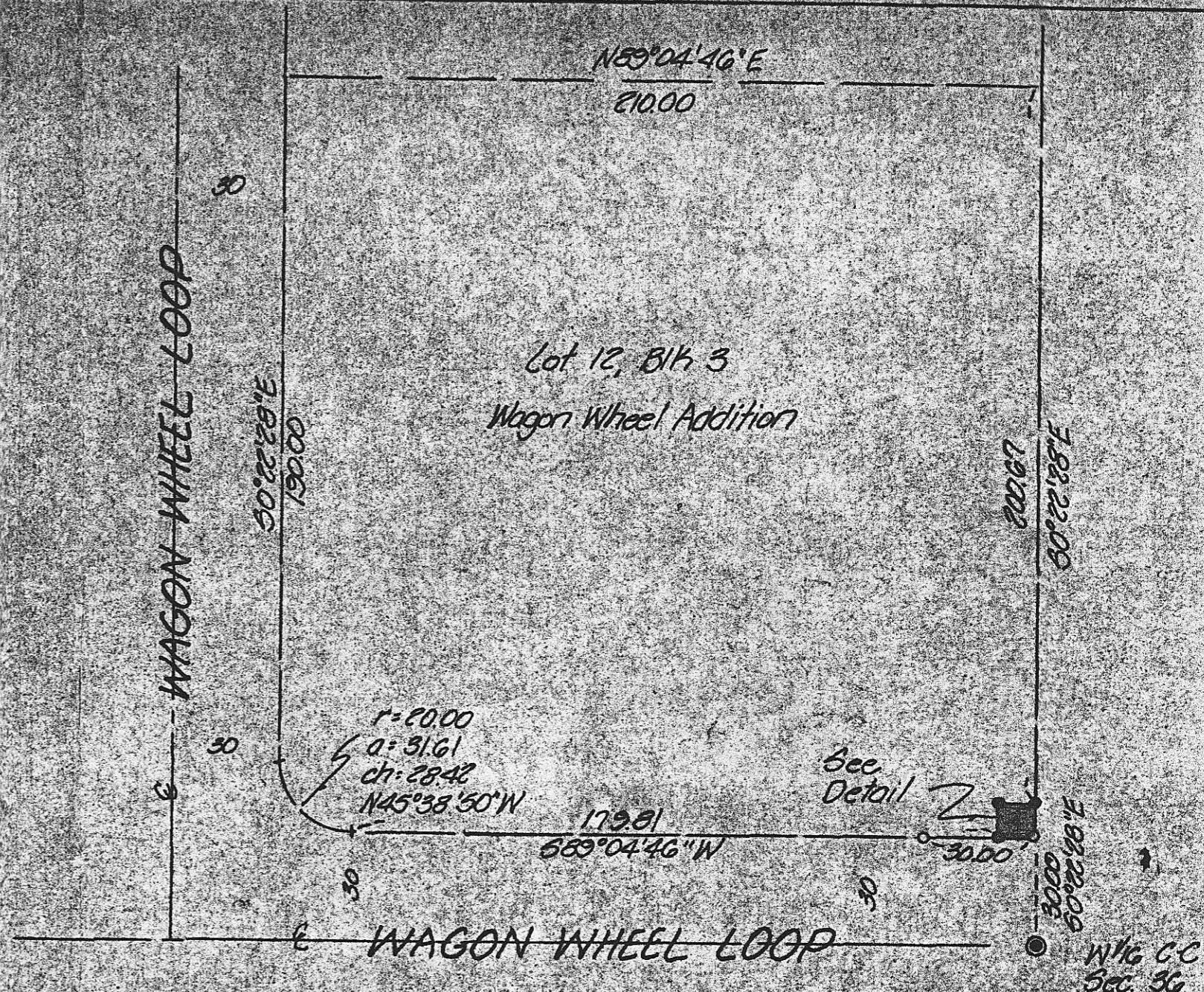
DETAIL
1"=4'

NARRATIVE:

The purpose of this survey was to locate the corners of the South 10 feet of the East 10 feet of Lot 12, Block 3 of Wagon Wheel Addition.

The monuments we found are as shown on the Plat of Wagon Wheel Addition, bearings are also based on said Plat.

- denotes set 3/8" x 30" iron pin with aluminum cap stamped PL3 953
- denotes find 3/8" iron pin
- denotes find 2 1/2" Brass Cap



VICINITY MAP
1"=40'

	KRUMBEIN ENGINEERING LTD. ENGINEERS - SURVEYORS - PLANNERS 361 S.E. Second Pendleton, Oregon		Scale <i>as shown</i>	Dwn. By <i>MLD</i>	Dwg. No. <i>65-228</i>	Revision
			Date <i>Nov 85</i>	Ckd. By <i>DHB</i>	Job No. <i>65-10</i>	Revision 2
Survey for PACIFIC NORTHWEST BELL			REGISTERED PROFESSIONAL LAND SURVEYOR <i>David H. Krumbein</i>		6-10-85 6-10-85	