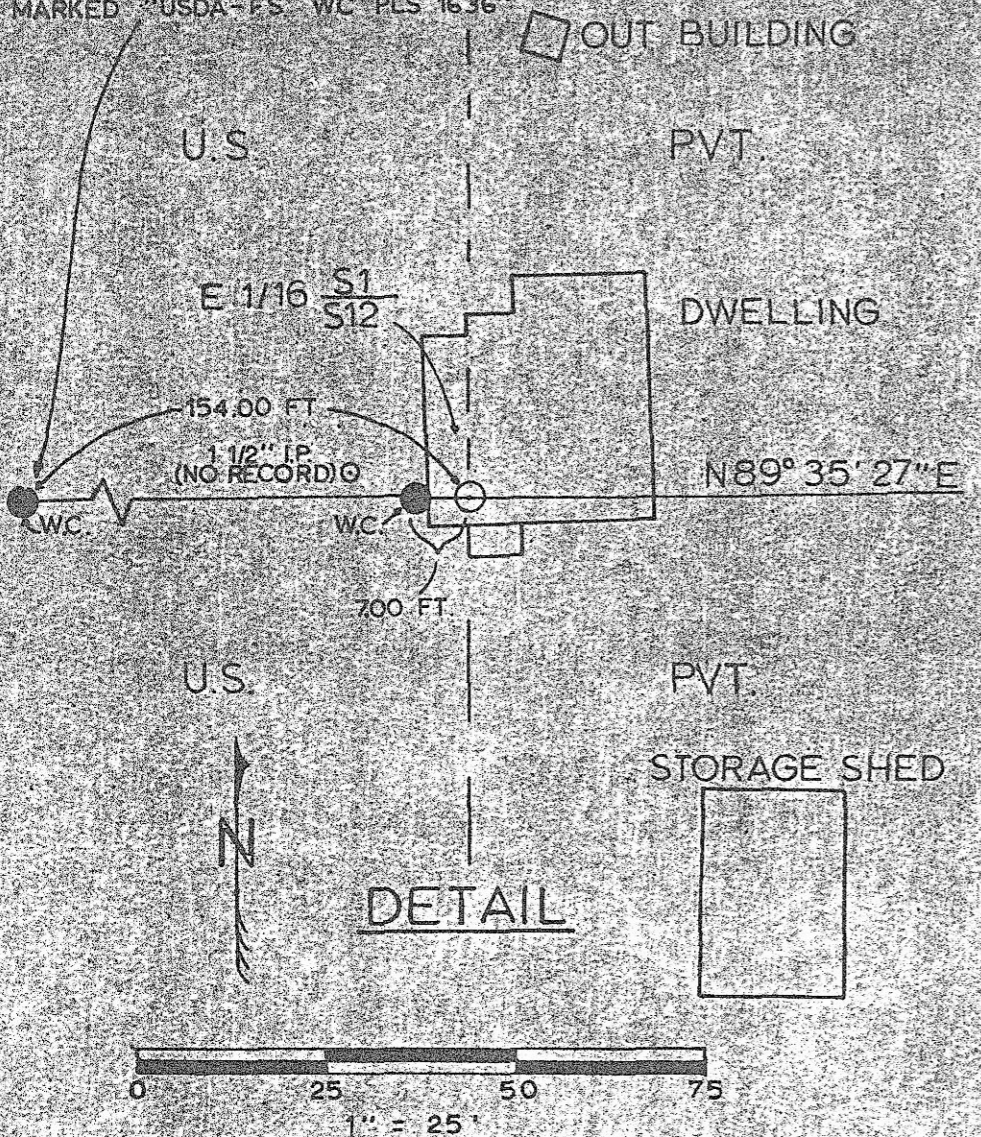


5/8" X 36" IRON ROD SET ON SECTION LINE 30" IN GROUND WITH A 1/2" ALUMINUM CAP MARKED "USDA-FS WC PLS 1636"



NARRATIVE OF SURVEY

ORIGINAL 1881 G.L.O. EVIDENCE OF CORNERS $\frac{1}{4} \frac{S1}{S12}$ AND $\frac{S1}{S12} | S6$ WAS FOUND AND THE CORNER POSITIONS PERPETUATED IN JUNE OF 1984. SURVEY AND ESTABLISHMENT OF THE $E \frac{1}{16} \frac{S1}{S12}$, WAS CONDUCTED IN JUNE AND JULY OF 1984. A DWELLING IS AT THE LOCATION OF THE $E \frac{1}{16} \frac{S1}{S12}$, SO A WITNESS CORNER MONUMENT WAS SET. SEE CERTIFIED RECORD OF LAND CORNER MONUMENT. FORMS FILED HERewith. SURVEY WAS CONDUCTED WITH A ZEISS TH-43 THEODOLITE AND A K & E E.D.M. SEE FIELD BOOK #1 GROSHEN 1984 PROJECT.

HISTORY OF SURVEYS

THE EAST LINE AND SUBDIVISION LINES OF T 6 S, R 28 E, W.M. WERE SURVEYED BY EDWARD W. SANDERSON IN 1881 UNDER HIS G.L.O. CONTRACT NO. 368.

SURVEYOR'S CERTIFICATION

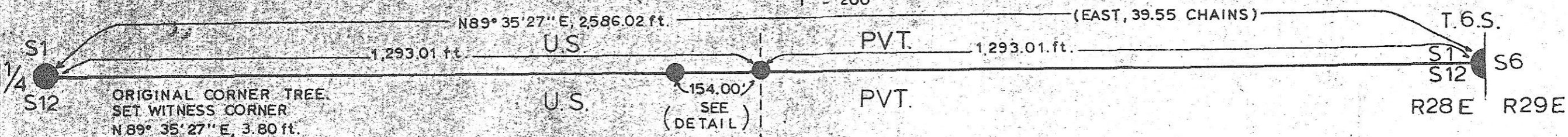
I, DENNIS L. GAYLORD, A REGISTERED PROFESSIONAL LAND SURVEYOR IN THE STATE OF OREGON, HEREBY CERTIFY THIS PLAT, AND THE NOTES HEREON OR ATTACHED, ARE A CORRECT REPRESENTATION OF A SURVEY PERFORMED UNDER MY DIRECT SUPERVISION DURING JUNE AND JULY 1984 FOR THE U.S. FOREST SERVICE IN ACCORDANCE WITH THE STATUTES OF THE STATE OF OREGON.

Dennis L. Gaylord
DENNIS L. GAYLORD, O.P.L.S., 1636

BASIS OF BEARING:
SOLAR OBSERVATION NEAR SECTION CORNER $\frac{S1}{S12} | S6$

REGISTERED PROFESSIONAL LAND SURVEYOR

Dennis L. Gaylord
OREGON
JULY 14, 1979
DENNIS L. GAYLORD
1636



LEGEND

- CORNER MONUMENTED FROM ORIGINAL EVIDENCE.
- WITNESS CORNER, SET BY SURVEY
- PROPERTY CORNER - NOT MONUMENTED.
- () G.L.O. RECORD BEARING & DISTANCE.
- GENERAL LOCATION OF SIXTEENTH LINES.
- UNRECORDED 1 1/2" IRON PIPE

APPROVED BY
Morrow County Surveyor
8-8-84
MLD
B-671-K

PLAT OF SURVEY
SECTIONS 1 AND 12
T 6S, R28E, W.M.
U.S. DEPARTMENT OF AGRICULTURE
UMATILLA NATIONAL FOREST
MORROW COUNTY, OREGON
DRAWN: *Caroline R. Brock* DATE: 7/23/84