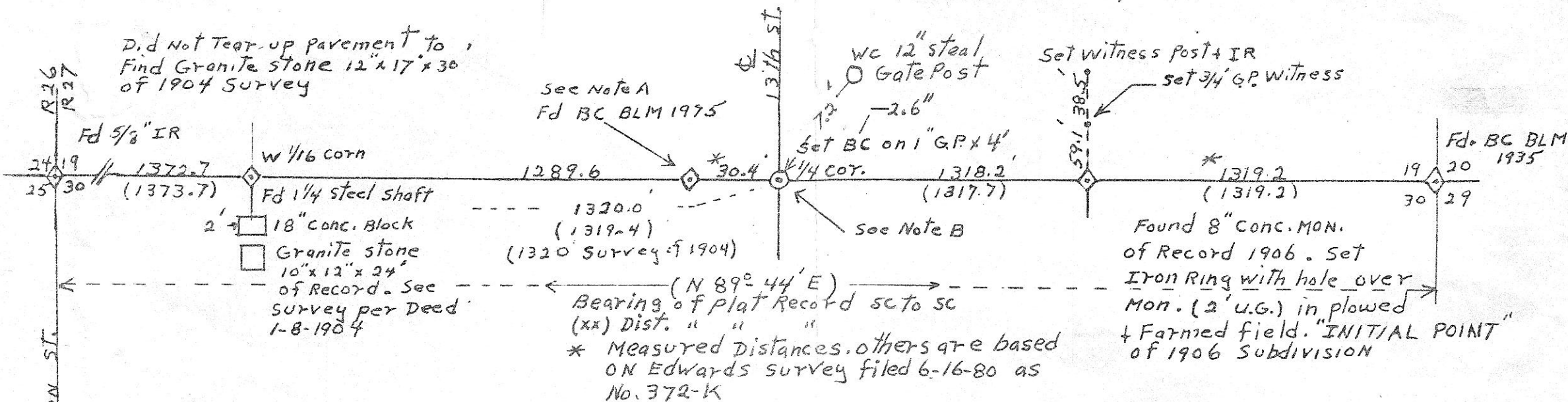


Edward's Survey # 372-K shows this BC to be on Line (E SC - W SC) within 0'-0'-07" or 0.09' North.



NOTES

- A. BC set by BLM 1975 was set by Prop. Meas. as for "Lost Corners". Corner was Not Lost as location can be verified filed Deeds and Surveys of 1904 + 1906 per Note B.
- B. 1/4 Corner Restored by Retracement of Worthington Surveys of 1906. Refer Report & Recommendations by McCullough, Bryant & Assoc. Inc. 550 S.W. 5th St. Corvallis, Ore 97330 + Dated Oct. 8, 1979
- (xxx) meas. of Record per "Worthington Tracts." as filed by Tamblyn in 1935.
- C. W 1/16 cor. (stone) set by Morrow Ctr Deputy Surveyor 1904, See Deed of 1-8-1904. Worthington Surveys accepted this placement as correct + used it in his surveys without change.

Restoration of 1/4 Corner Sects. 19/30 T5N, R27EWM 1SS.1, 9-1-81 Scale - variable

NORTH

REGISTERED
PROFESSIONAL
LAND SURVEYOR

W. W. Cramer

OREGON
SEPT. 30, 1977
WALTER W. CRAMER
1423

RECEIVED BY
Morrow County Surveyor
Date January 19, 1982
Rec'd By M. Hughes
No. B-490-K 213