

SURVEY FOR F. GULICK  
 Parts of Lots 6-7 Block 45W  
 IN SW  $\frac{1}{4}$ , S23, T5N, R26E  
 3-1-79 SCALE 1" = 100'

REGISTERED  
 PROFESSIONAL  
 LAND SURVEYOR

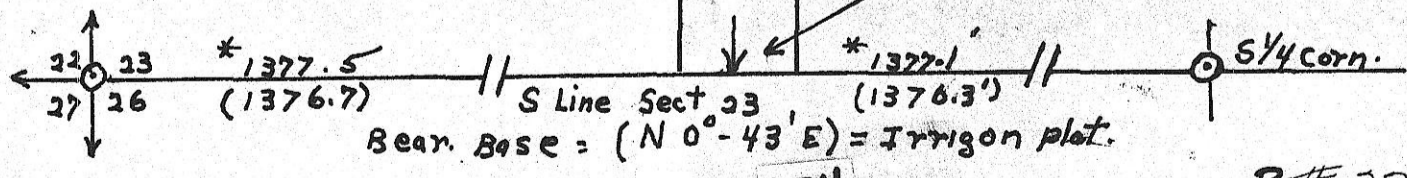
W. W. Sramer

OREGON  
 SEPT. 20, 1911  
 WALTER W. GRAMER  
 1423

RECEIVED BY  
 Morrow County Surveyor  
 Date March 23, 1979  
 Rec'd By WAS  
 No. 226-K

MONS. FOUND  
 \* See Edwards for G. Nelson  
 8-15-78  
 (xxi) Plat Dist. + Bearings

Found 1" I.P. 10" below  
 Surface of Pavement  
 at  $\frac{1}{4}$  Wash. st. at  $\frac{1}{4}$   
 6th Ave. W. also same  
 at  $\frac{1}{4}$  5th + Wash. st.  
 added RR Spike on Top.



B-226-K-174

B#226-K