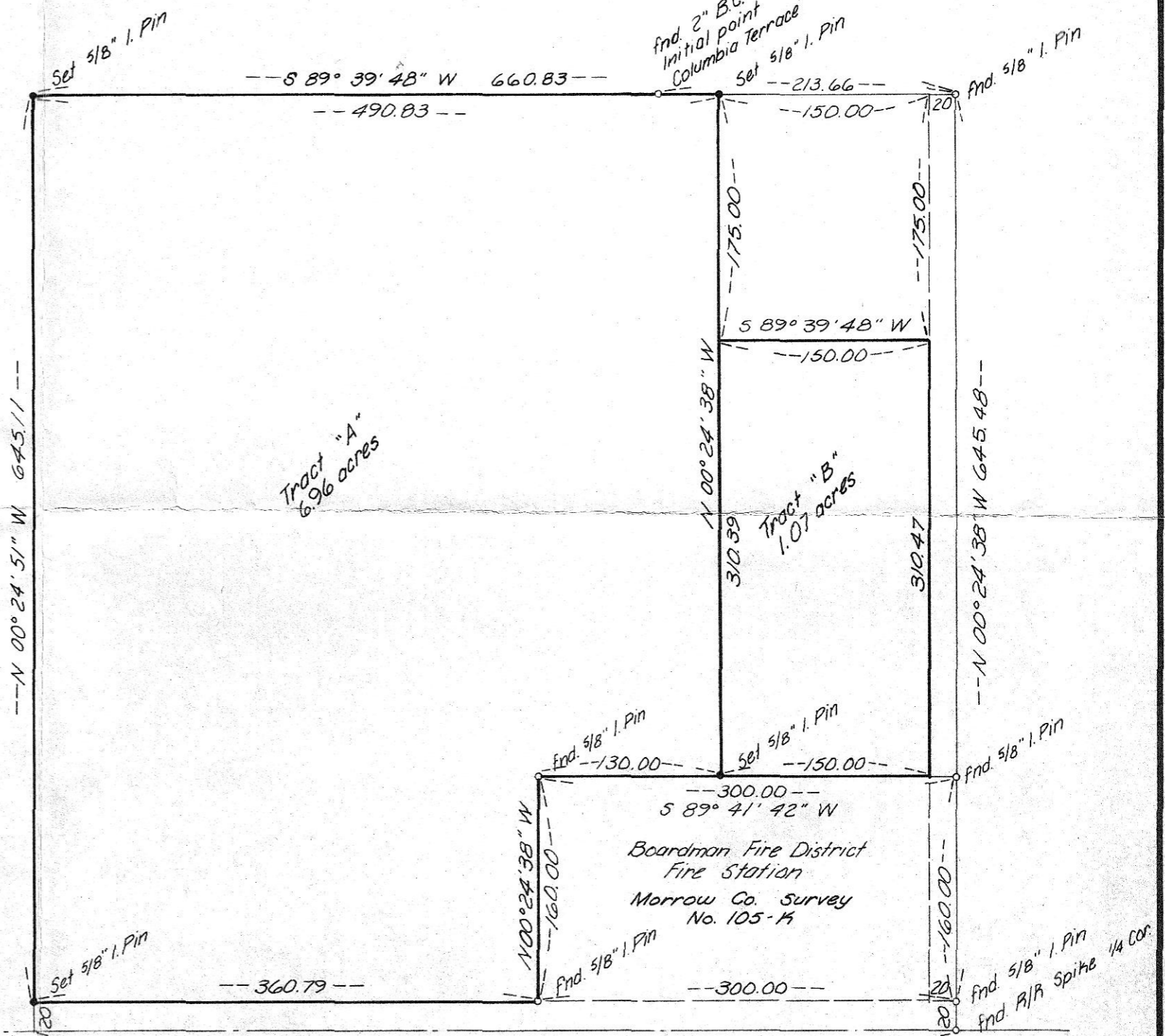
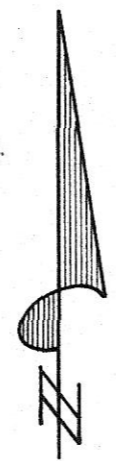


NE 1/4 Sec 17, T4N, R25E, WM  
1" = 600'



SE 1/4, SE 1/4, NE 1/4, Sec 17, T4N, R25E, WM  
1" = 100'

RECEIVED BY  
Morrow County Surveyor  
Date 1-27-79  
Rec'd By MLD  
No. B-178-K

REGISTERED  
PROFESSIONAL  
LAND SURVEYOR

*David H. Krumbein*

OREGON  
JULY 17, 1970  
DAVID H. KRUMBEIN  
833

**KRUMBEIN ENGINEERING CO.**  
ENGINEERS - SURVEYORS - PLANNERS  
221 S. Main, Pendleton, Oregon

Survey for  
**SUNRISE**  
(Gary Heagor & Nishamura)  
Parcel in SE 1/4, NE 1/4, Sec 17, T4N, R25E W.M.

SCALE	As Noted
DATE	12-27-78
DRN. BY	MH
CKD. BY	DHK
DRNG. NO.	78-44 B

Job No. 78-281

B-178K-150