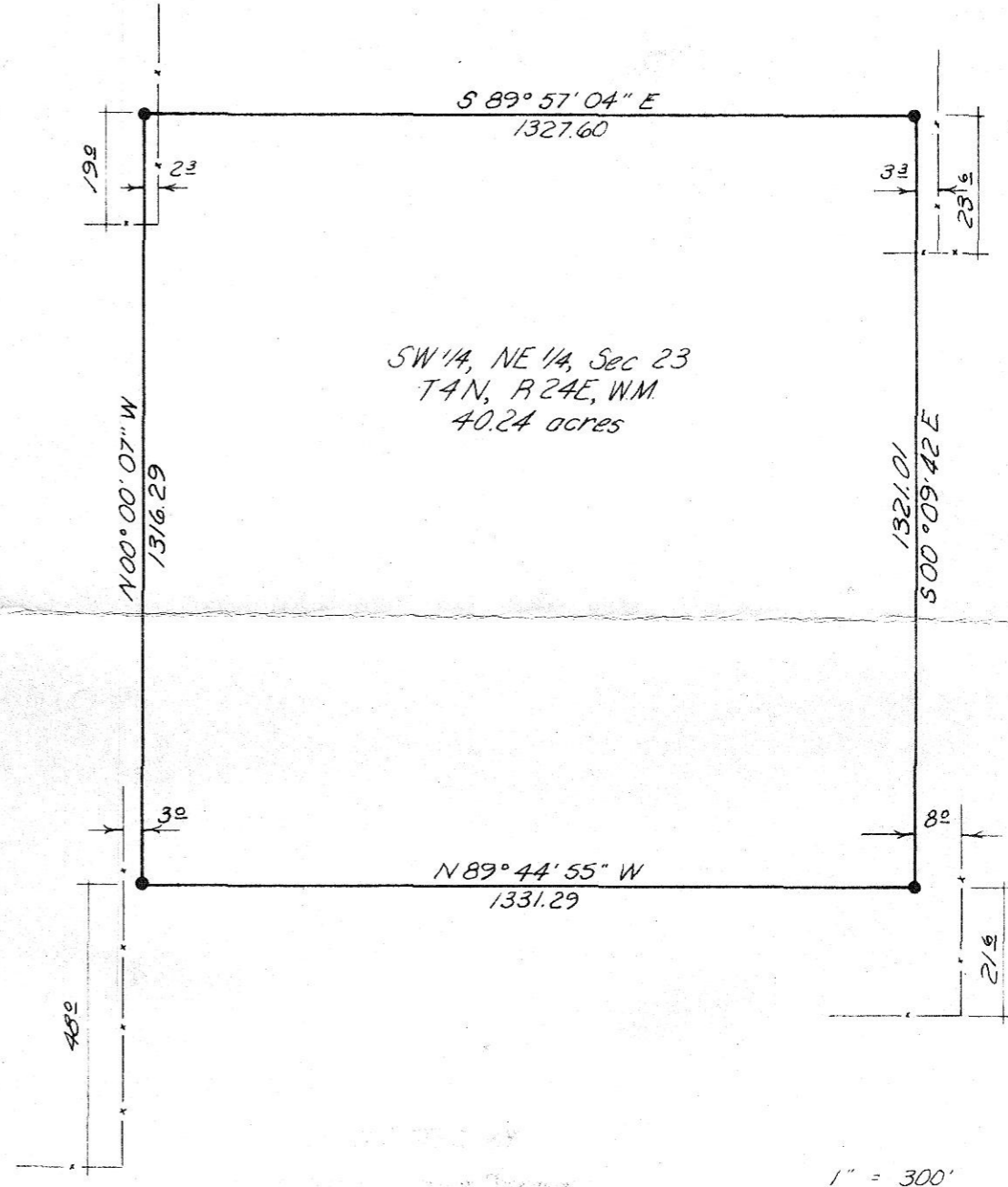
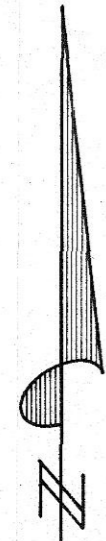


Sec 23, T4N, R24E, W.M.
NTS.

Detail "A"
NTS.

Note: Field ties show that the location of the 2" I. pipe set by Asher (LS 635) Hayes & Harris Drng # 65-165A at the NW corner of Section 23 to disagree with location shown on Asher's drawing.
 Also, Asher shows using a R/P spike for the NE corner of Section 23, W.O. Harris survey for Miller Drng # 75-56B dated 4-17-75 shows a 3" I. pipe for that corner. This 3" I. pipe is N 49° 45' W at the R/P spike Asher used.
 Field ties show that the west 1/4 corner of Section 23 set by Asher to be on line from the 3" I. pipe at the SW corner of Section 23 set by Asher to the 2" I. pipe set by Asher for the NW corner which is in error.
 The NW corner of Section 23 was reapportioned by this firm during survey for Louis Lotrace 1-12-78. Field ties show the 3" I. pipe set by Asher for the SW corner of Section 23 to be correct. Also, although no reference as to who set the 3" I. pipe in the SE corner of Section 23, field ties show it to be correctly located.
 Bearings based upon survey by Krumbein Engineering for Louis Lotrace Drng # 78-4C, Morrow Co. No. 148-K



• Set Brass Cap

1-28-79
MLD
B-177-K



KRUMBEIN ENGINEERING CO. ENGINEERS - SURVEYORS - PLANNERS 221 S. Main, Pendleton, Oregon	SCALE As Noted
	DATE 12-28-78
Survey for JODY TATONE	DRN. BY MH
SW 1/4, NE 1/4, Sec 23, T4N, R24E, W.M.	CKD. BY D.H.K.
	DRNG. NO. 78-45B