

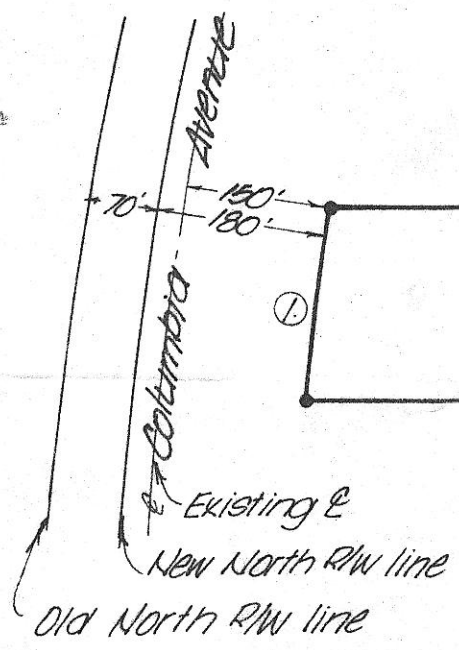
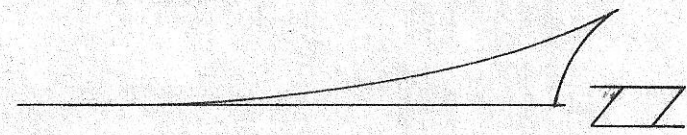
N.E. cor. Sec. 9  
 find brass screw & washer

N 01° 29' 40" W  
 2639.46

E. 1/4 cor.  
 find brass screw & washer

N 01° 29' 20" W  
 2587.71'

SE cor. Sec. 9  
 find brass screw & washer



find 2" pipe, initial  
 Point "Hansen's Add'n"

Curve Data  
 ① Δ: 01° 01' 13"  
 R: 11309.16  
 Arc: 201.40  
 Chord: 201.40  
 Ch. bearing: S 85° 50' 41" E

REGISTERED  
 PROFESSIONAL  
 LAND SURVEYOR  
 David H. Krumbein  
 OREGON  
 JULY 17, 1970  
 DAVID H. KRUMBEIN  
 933

<b>K</b> KRUMBEIN ENGINEERING CO. ENGINEERS - SURVEYORS - PLANNERS 221 S. Main, Pendleton, Oregon	SCALE 1" = 200'
	DATE Aug. 9, 1977
	DRN. BY P.L.S.
Survey for <b>FRED NISLIAMURA</b> Descriptive parcel in NE 1/4, Sec. 9, T4N, R25E, W1W.	CKD. BY D.H.K.
	DRNG. NO. #77-36B