

Fd. Circular Conc. Mon.
With Brass Plug

17 16
20 21



1854.5
SOUTH

Fd. R/W I.P.
Sta. 140+00

57° 09' W 612.90
581.2

Corner No 1
& Point of beginning
for survey description.

Fd. Circular Conc.
Mon. With Brass Plug

20 21
29 28

• SET IRON PIN

J.V. TORONTO AND ASSOCIATES

DRAWN: R.A.P.

CHECKED:

SCALE: 1" = 100'

DATE: 4-9-68

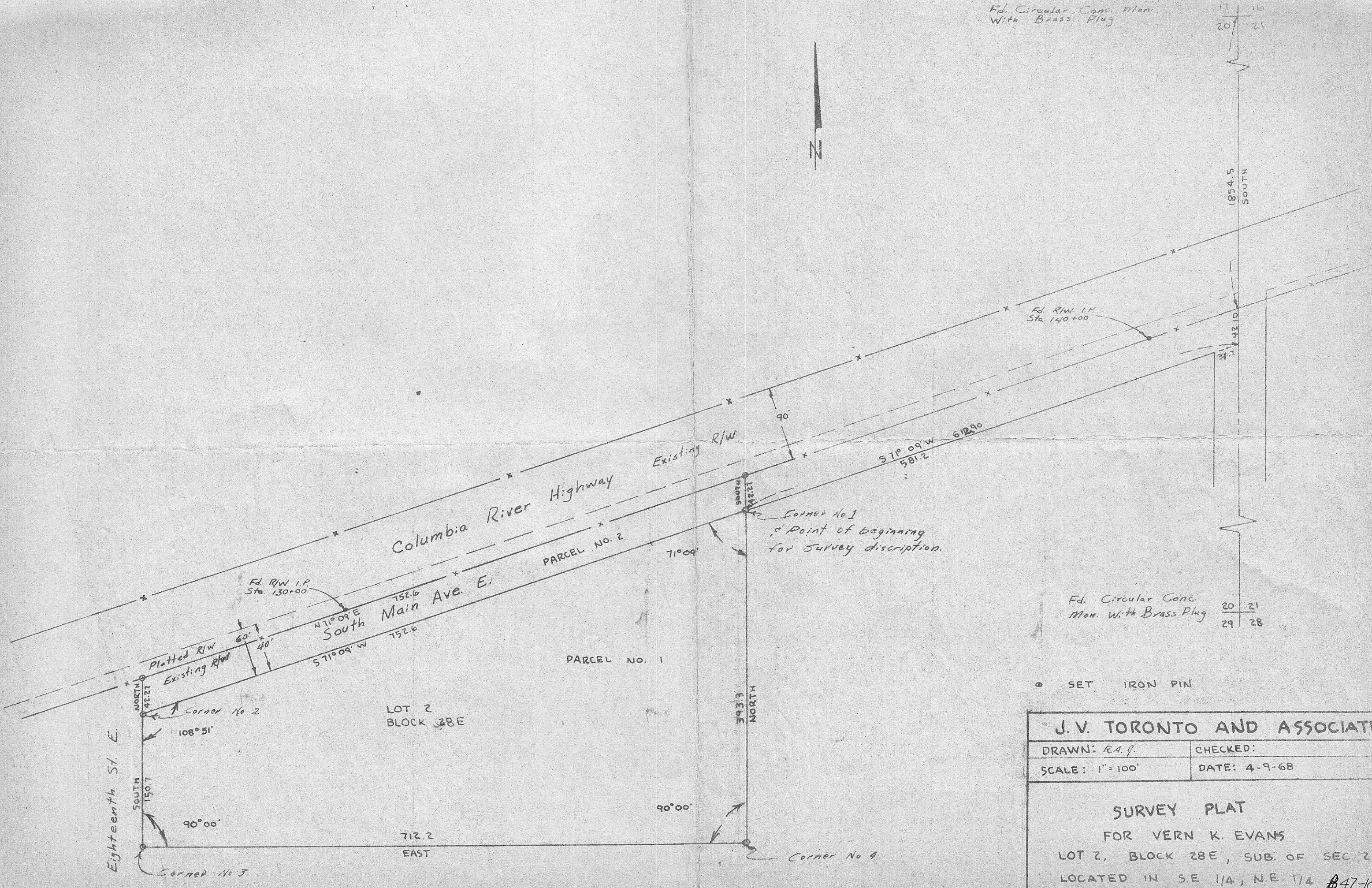
SURVEY PLAT

FOR VERN K. EVANS

LOT 2, BLOCK 28E, SUB. OF SEC. 20
LOCATED IN S.E. 1/4, N.E. 1/4

SEC. 20 T5N R27 E W.M. B47-K-10

SEC. 20 T5N R27 E W.M.



Columbia River Highway

Main Ave. E.

EIGHTEENTH ST. E.

PARCEL NO. 1

PARCEL NO. 2

LOT 2
BLOCK 28E

712.2
EAST

543.7
NORTH

42.21
NORTH

150.1
SOUTH

Corner No 2

Corner No 3

Corner No 4

Existing R/W

Platted R/W
Existing R/W

Fd. R/W I.P.
Sta. 130+00

N 71° 09' E
South

71° 09'

90° 00'

108° 51'

90° 00'

90'

42.10

34.1