

**BASIS OF BEARING**

SOLAR OBSERVATION

SOUTH 1/4 CORNER, SECTION 8

NOVEMBER 7, 1975

LATITUDE: 45° 13' 47"

DECLINATION: 16° 14' 12.2" S

VERTICAL ANGLE: 19° 41' 45"

MEAN MAGNETIC DECLIN. = 20° E



**SURVEYOR'S STATEMENT**

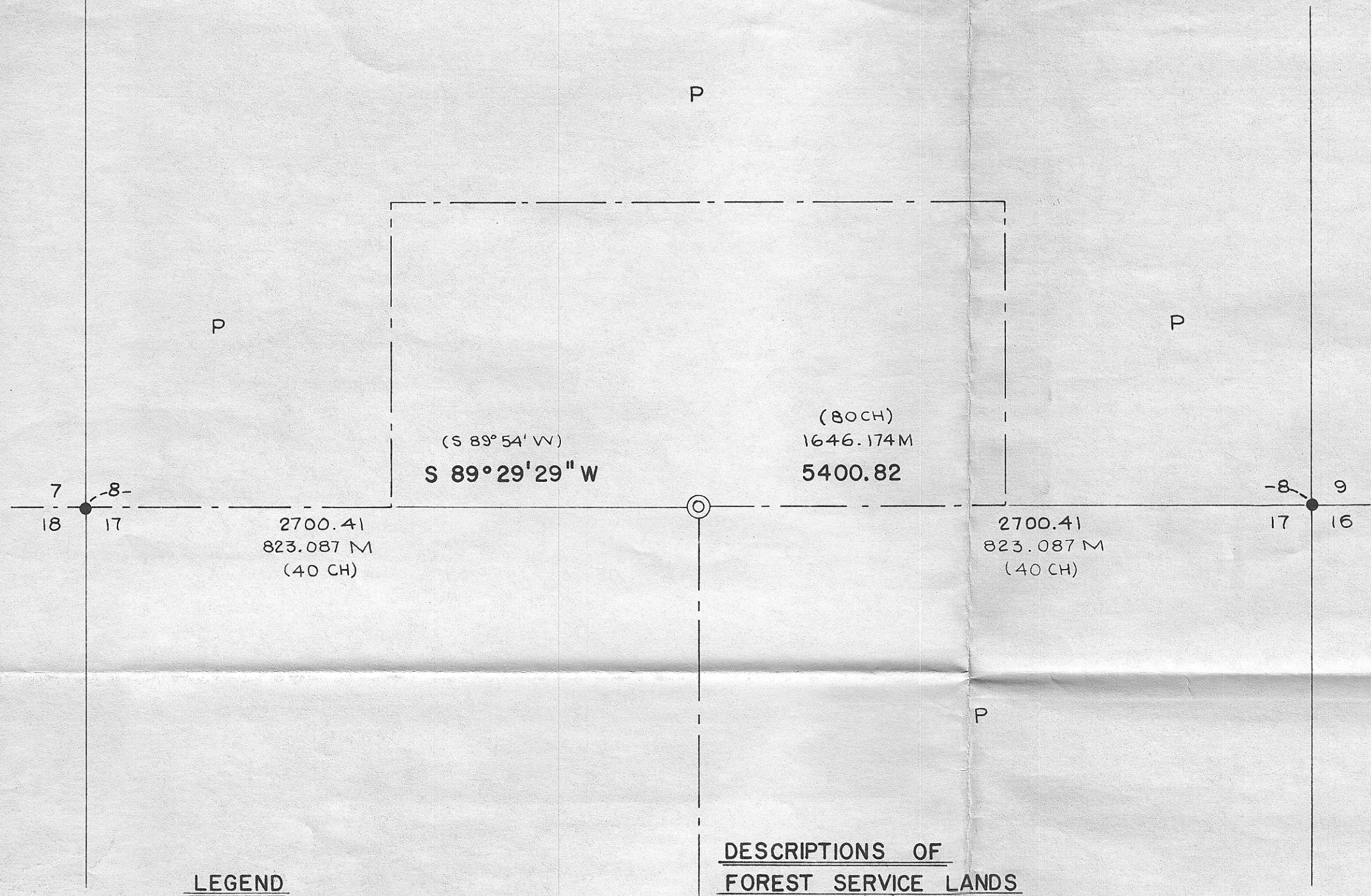
I, DUANE I. GRIFFITH, REGISTERED LAND SURVEYOR IN THE STATE OF OREGON, HEREBY CERTIFY THAT THIS PLAT AND THE NOTES HEREON, OR ATTACHED, ARE A CORRECT REPRESENTATION OF THE SURVEY I MADE IN NOVEMBER, 1975, FOR THE U.S. FOREST SERVICE, IN ACCORDANCE WITH THE STATUTES OF THE STATE OF OREGON AND WITH THE ARTICLE OF MY CONTRACT.

*Duane I. Griffith*  
 PLS 644

REGISTERED  
 PROFESSIONAL  
 LAND SURVEYOR

*Duane I. Griffith*

OREGON  
 JULY 10, 1896  
 DUANE I. GRIFFITH  
 644



**LEGEND**

- FD. G.L.O. CORNER; SET 3/8" x 10" SPIKE
- ⊙ SET 2 1/2" x 30" IRON PIPE WITH BRASS CAP AT PROPORTIONATE DISTANCE
- ( ) RECORD BEARING AND DISTANCE
- 243 M METRIC VALUE
- P PRIVATE PROPERTY
- FOREST BOUNDARY

**DESCRIPTIONS OF FOREST SERVICE LANDS**

- SECTION 8
- SE 1/4 OF THE SW 1/4
- SW 1/4 OF THE SE 1/4
- SECTION 17
- W 1/2

**NOTE**

FOR MONUMENTATION RECORDS  
 SEE MONUMENTATION SHEETS  
 FILED SEPARATELY

<b>BAGETT, GRIFFITH &amp; ASSOCIATES</b>		
La Grande, Oregon		
Map of Survey		
TO ESTABLISH THE		
1/4 CORNER COMMON TO SECTIONS 8 AND 17		
T 4 S R 29 E W. M.		
MORROW COUNTY, OREGON		
SURVEYED FOR	UMATILLA NATIONAL FOREST	
SURVEYED BY	D. I. G.	NOV. 1975
Scale: 1" = 500'	Drawn by: t. d. g.	DEC. 1975