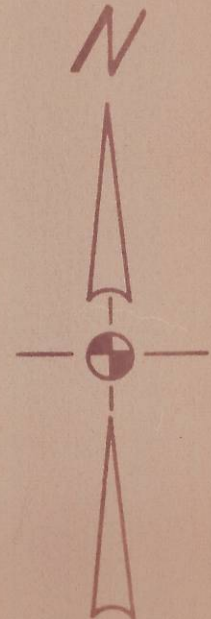
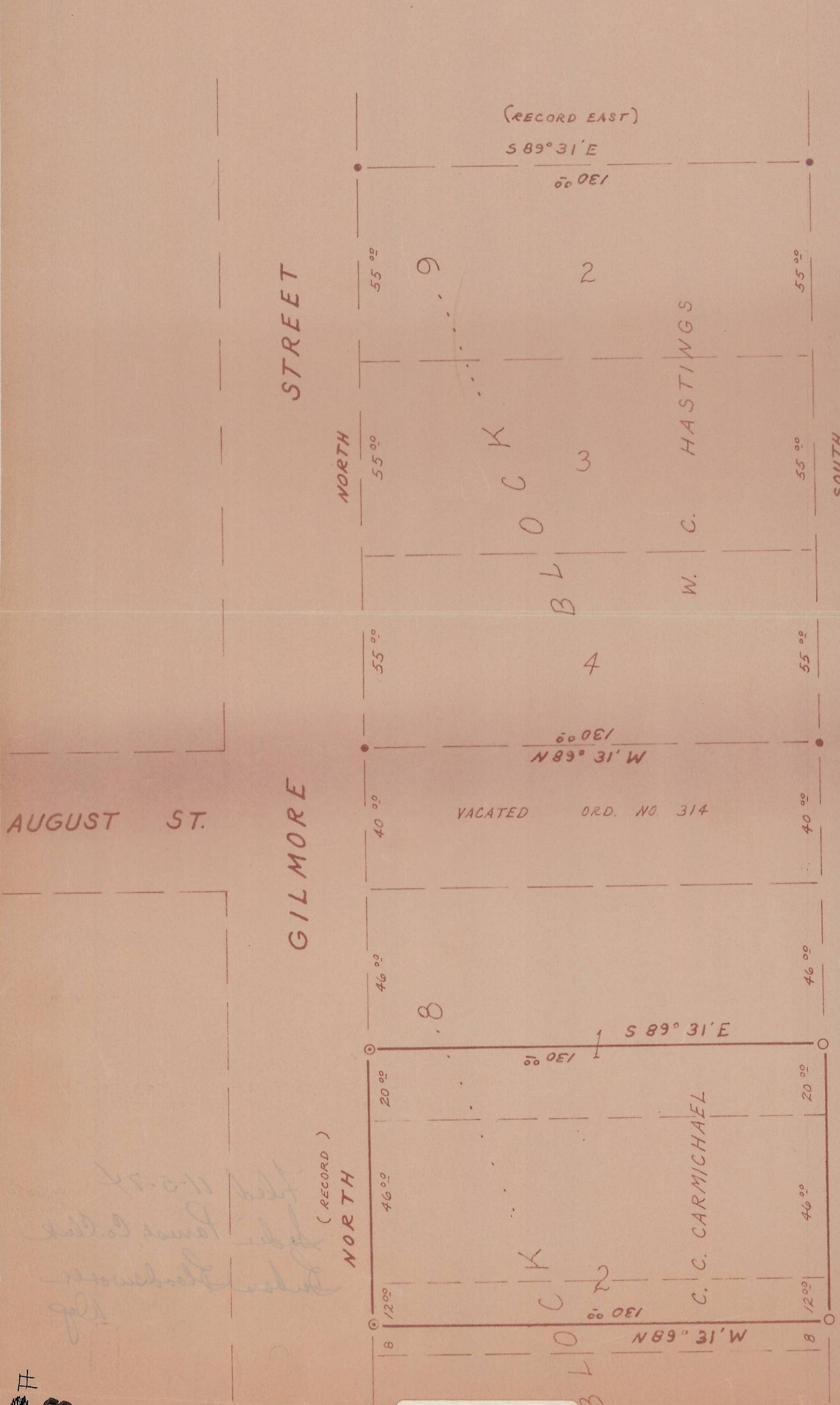


PROPERTY SURVEY

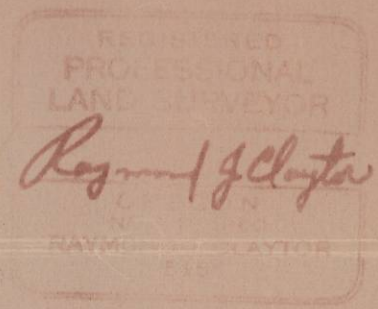
PORTIONS OF LOTS 1 & 2 BLOCK 8 JONES 1ST ADD TO HEPPNER
MORROW COUNTY, OREGON

SCALE: 1" = 30'

SEPT. 1974



CONSTRUCTION ENGS IN



DRAWN BY: J. R. DAVIS

DESCRIPTION :
(RECORD)
THE SOUTH 20.00 FT. OF LOT 1
THE NORTH 46.00 FT. OF LOT 2
ALSO : THE NORTH 12.00 FT.
OFF THE NORTH END OF THE
SOUTH 20.00 FT. OF LOT 2
IN BLOCK 8 OF JONES 1ST
ADDITION TO CITY OF HEPPNER.

LEGEND :

- FOUND MONUMENTS FROM HASTING'S SURVEY 1970 BY BAGETT-GRIFFITH-FERGUSON
- SET 1/2" x 30" STEEL PIN
- ⊙ SET CONC. NAILS IN SIDEWALK

Handwritten notes:
1-2-74
Heppner Jones Co. Plat
C. C. Carmichael
Ref.

B-4-K-88

B-4-K

88