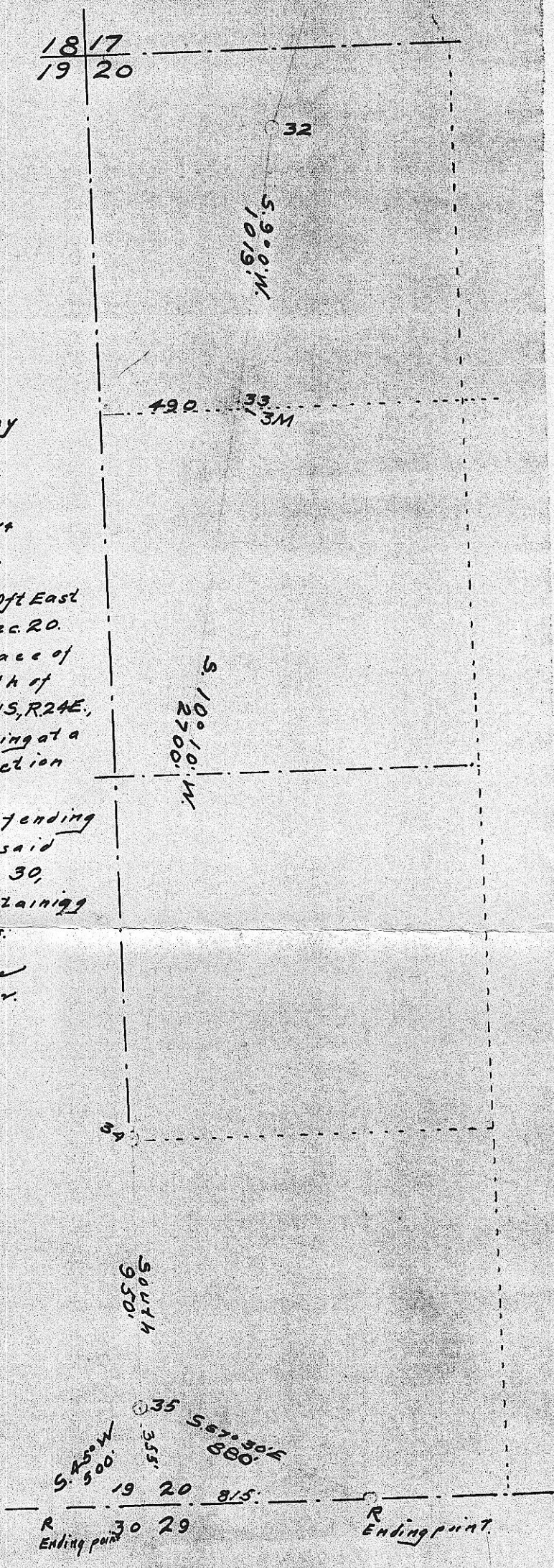


18 17
19 20

*Description
of
Center Line of Right of Way
through
Property of Chas. H Hudson
in
SW¹/₄ of NW¹/₄ and in W²/₄ of S.W¹/₄
Sec. 20, T. 1 S., R. 24 E., W. M.*

*Beginning at a point 490ft East
of N.W. corner of SW¹/₄ of NW¹/₄, Sec. 20.
Thence S. 10° 10' W 2700 ft., to place of
Ending at a point 1305 ft. North of
Corner to Secs. 19-20-29-30, T. 1 S., R. 24 E.,
also another parcel, beginning at a
point 355 ft., North of said Section
Corner, and running thence
S. 67° 30' E. 880 feet, to place of ending
at a point 815 feet East of said
Corner to Secs. 19-20-29 and 30,
T. 1 S., R. 24 E. W. M., and containing
in all 5.15 Acres, more or less.*

*Joseph Kirschman
Surveyor.*



A-910-E
~~A-910-E~~ A-74