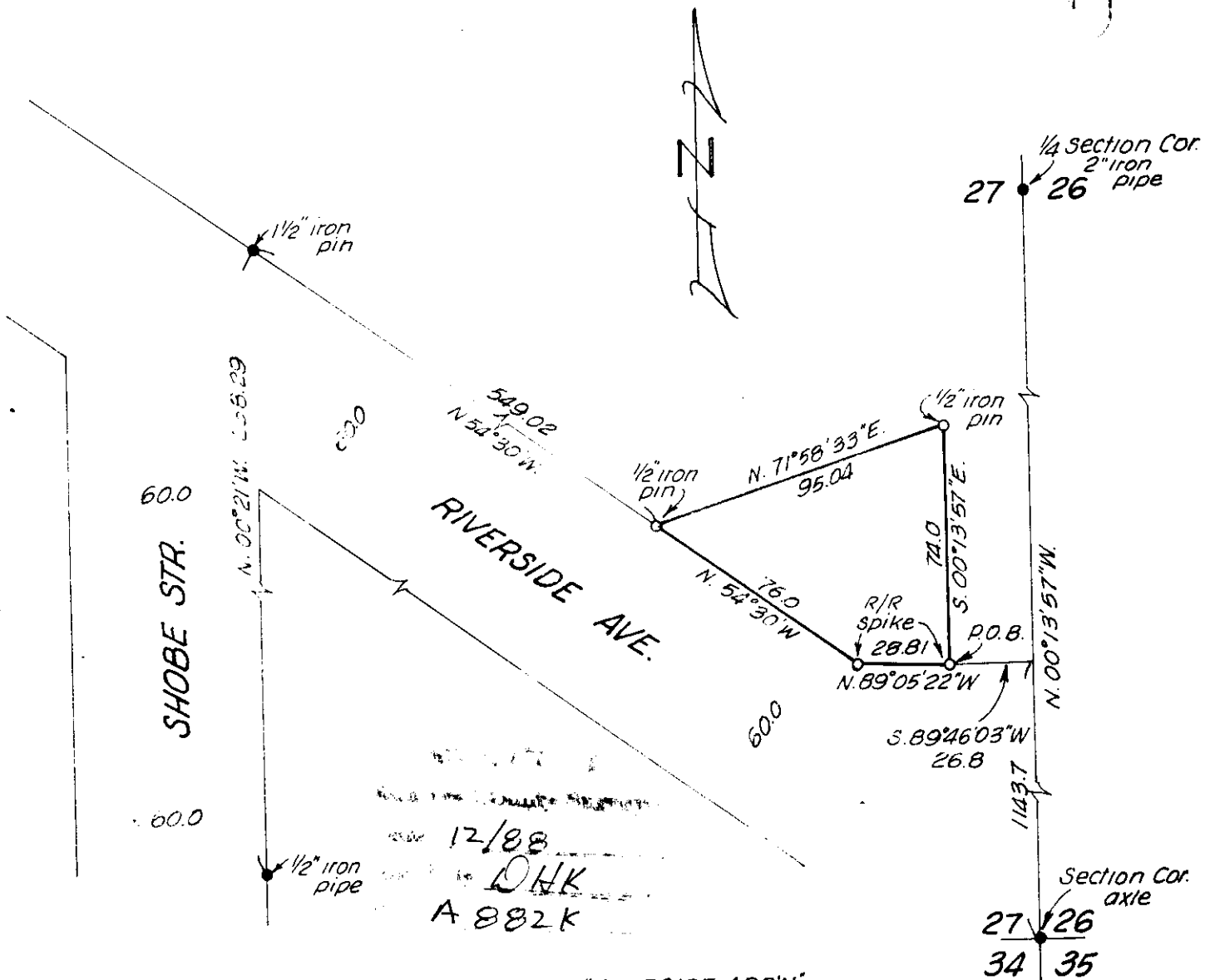


David H. Kraler



12/88
D.H.K.
A 882K

NOTE: All bearings are relative to the plat of "RIVERSIDE ADD'N".
 LEGEND:
 ● Denotes points fd.
 ○ Denotes points set.

SURVEY FOR MORROW COUNTY
 GRAIN GROWERS
 Sec. 27, T. 2 S., R. 26 E., W.M.

WAYNE HARRIS CO. INC.		PENDLETON, ORE.		
ENGINEERS - SURVEYORS		DRN. BY	C.T.P.	DRN. NO.
SCALE	1" = 50'	CKD. BY	D.H.K.	74-361
DATE	5-6-74			

A-882-K-72