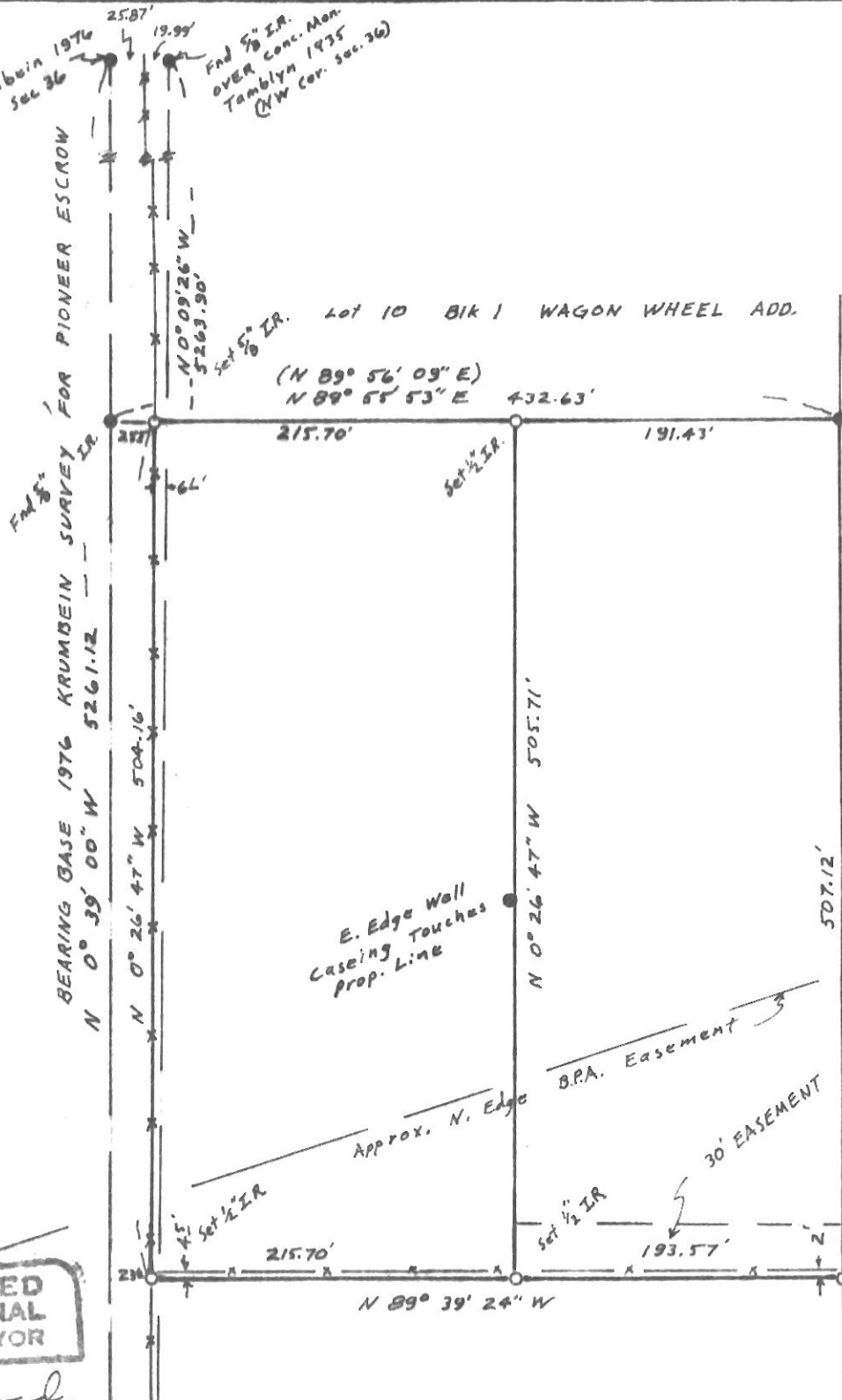


End Bl. Krumbain 1976 NW Cor. Sec 36  
 End 5/8 I.R. OVER conc. Mon. Tamblin 1935 (NW Cor. Sec. 36)



SCALE: 1"=100'



REGISTERED PROFESSIONAL LAND SURVEYOR

*G. Dennis Edwards*

OREGON JULY 16, 1921 G. DENNIS EDWARDS 951

RECEIVED BY Morrow County Surveyor Date April 13, 1982 Rec'd By M. Hughes No. A-493-K

End Bl. W.L. 13.B. North of SW Cor. Sec. 36 U.S. Gov. 1915

SURVEY FOR PAUL BARNES IN NW 1/4 Sec 36, T5N, R26E, W.M., MORROW COUNTY, OREGON. 3/17/82 JOB # 58203009

EDWARDS SURVEYING P.O. Box 763 HERMISTON, OR.

567-3336