

BC. 1/4 COR
22 23

661.08
EIGHTH ST W

RR Spike
22 23
27 26

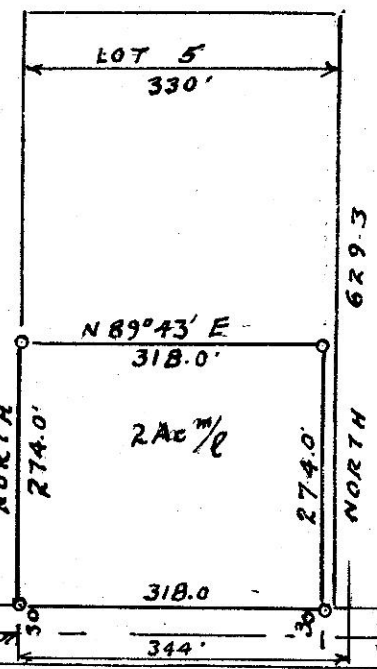
WASHINGTON AVE W.

N 89° 43' E

1763.0

SEVENTH ST W

BLOCK 38 W



SCALE 1" = 200'

LEGEND

- POINTS FOUND AS DESCRIBED
- POINTS SET 1/2" BOX RODS
- BEARINGS BASED ON MORROW COUNTY SHEET NO. 5N 26 23



PORTION OF LOT 5 BLOCK 38W
SECTION 23 T 5 N., R 26 E., W.M.
MORROW CO. OR.
FOR ALBERT RIGGS

3-8-77

A-41-K-14

A# 41-K-14