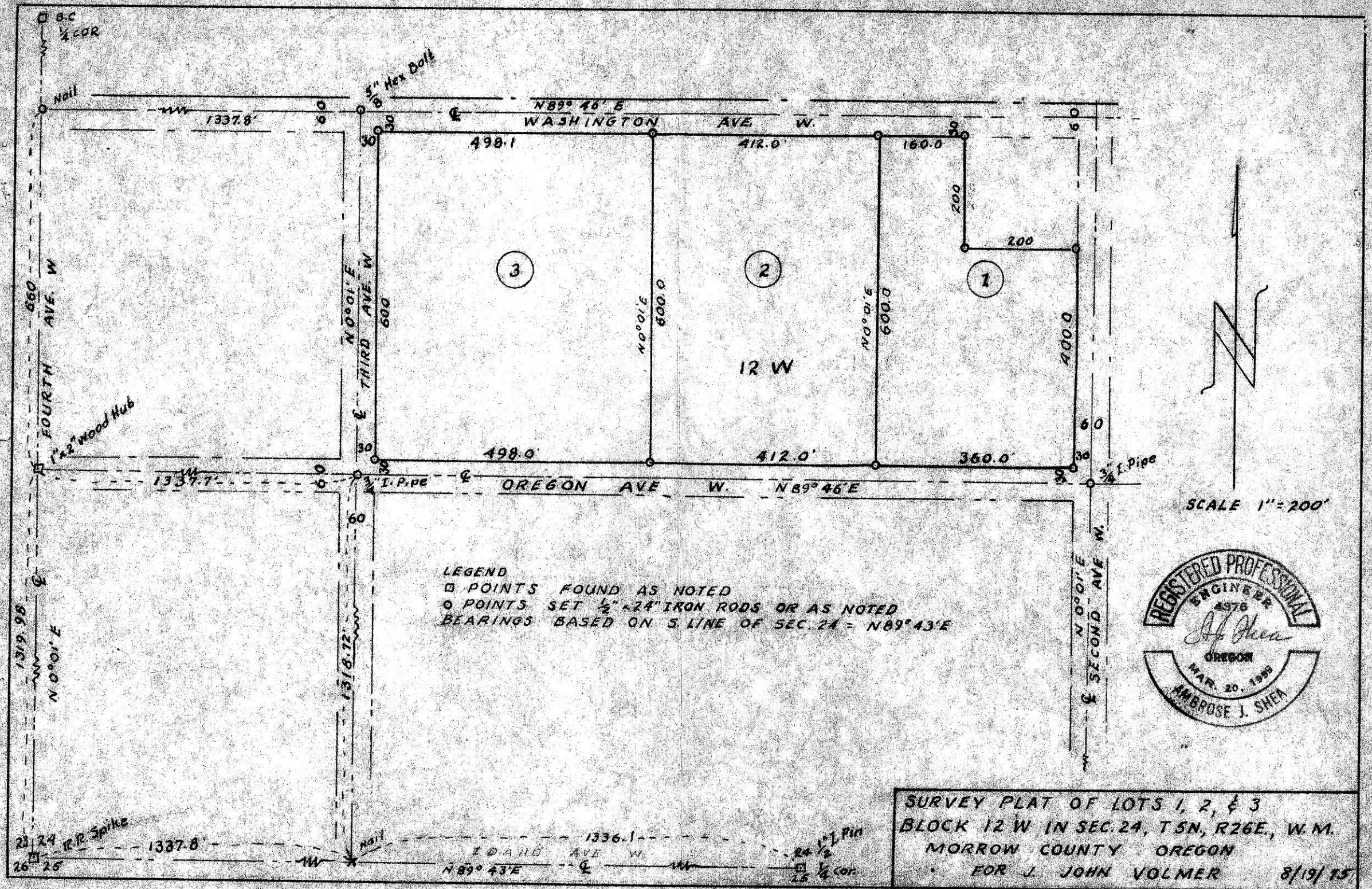


A-37-K-11



**LEGEND**  
 □ POINTS FOUND AS NOTED  
 ○ POINTS SET 1/2" x 24" IRON RODS OR AS NOTED  
 BEARINGS BASED ON S. LINE OF SEC. 24 = N89°43'E

SCALE 1" = 200'



**SURVEY PLAT OF LOTS 1, 2, & 3**  
**BLOCK 12 W IN SEC. 24, T5N, R26E., W.M.**  
**MORROW COUNTY OREGON**  
 FOR J. JOHN VOLMER 8/19/15

A-37-K