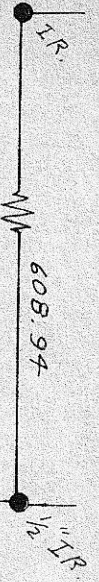
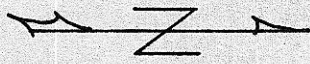
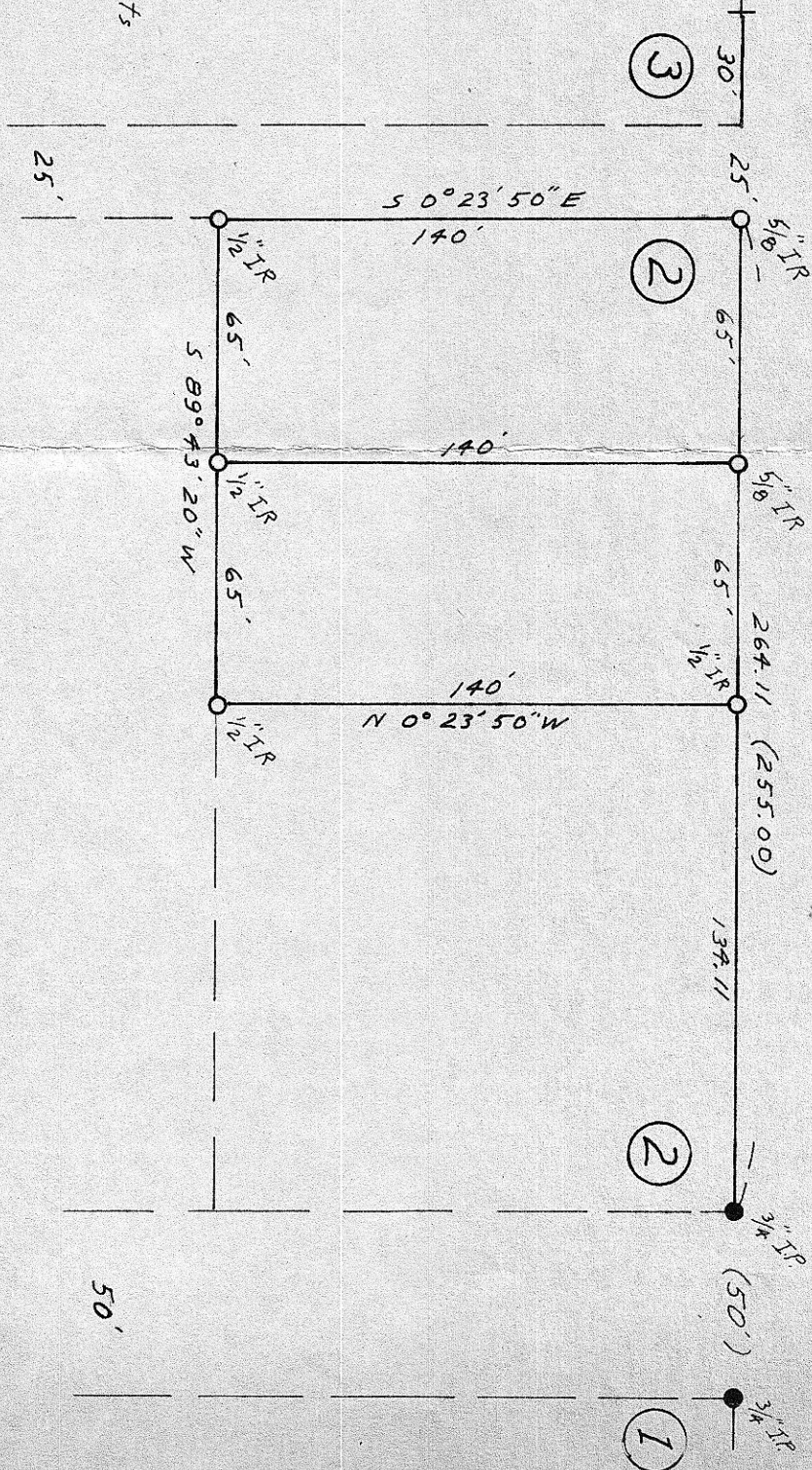


OSTERKAMP'S ADD.
(Bearing Base)

W. 1st St



60' W. UTAH AVE. 5 89° 43' 20" W 90'



- Scale 1" = 50'
- Monuments End
- Monuments set
- (000) record measurements

REGISTERED
PROFESSIONAL
LAND SURVEYOR

Dennis Edwards

OREGON
JULY 14, 1971
G. DENNIS EDWARDS
951

SURVEY FOR MOBILE MAGIC INC.
In Lot 2 Block 2 West, Sec. 25, T5N, R26E, WM.
Morrow County, Oregon

July, 1975

Denny Edwards
PO Box 805 Hermiston

32-K-6

A-32-K