

Record of Land Corner Monumentation

Section 05 Township 7S Range 26E Code T7SR26E A07

County of Morrow Date: January 10, 2014

History of Original Corner Establishment:

The Original Monument was established in 1879 by A.F York in an Original GLO Survey of Township 7 South Range, 26 East under Contract No. 309. A. F. York completed the North boundary of Township 7 South, Range 26 East in 1878. E.W. Sanderson retraced York's line a year later and held York's Mounument.

York's Notes: A Yellow Pine 37" in Ø at 38.20 Chains

North Wall Creek 19 lks wide Runs N.E. at 39.60 Chains

Set Stone 17x11x7 for 1/4 Sec. Cor. in raised Stone Mound at 40.00 Chains

Sanderson Notes: North Wall Creek 30 lks wide Runs N 55° E 25° at 10.00 Chains

To Stone 12x10x6, in Stone Mound for 1/4 Sec. Cor. set by old survey at 10.50 Chains

Description of evidence found:

Found the Original Line Bearing tree as decribed in York's notes for this Section Corner. Used West Section Corner common to 31 & 32 of the Township 6 South and the Line Tree for Bearing and found a 17x11x7 Stone on Line at a distance of 118.8' from the Line Tree - the same distances as in York's notes.

Found Mound of Stone & Pine Stump 173' East as per USFS Corner Cards. Weaver & Moore

Description of monumentation and accessories established to perpetuate the location of this Section Corner:

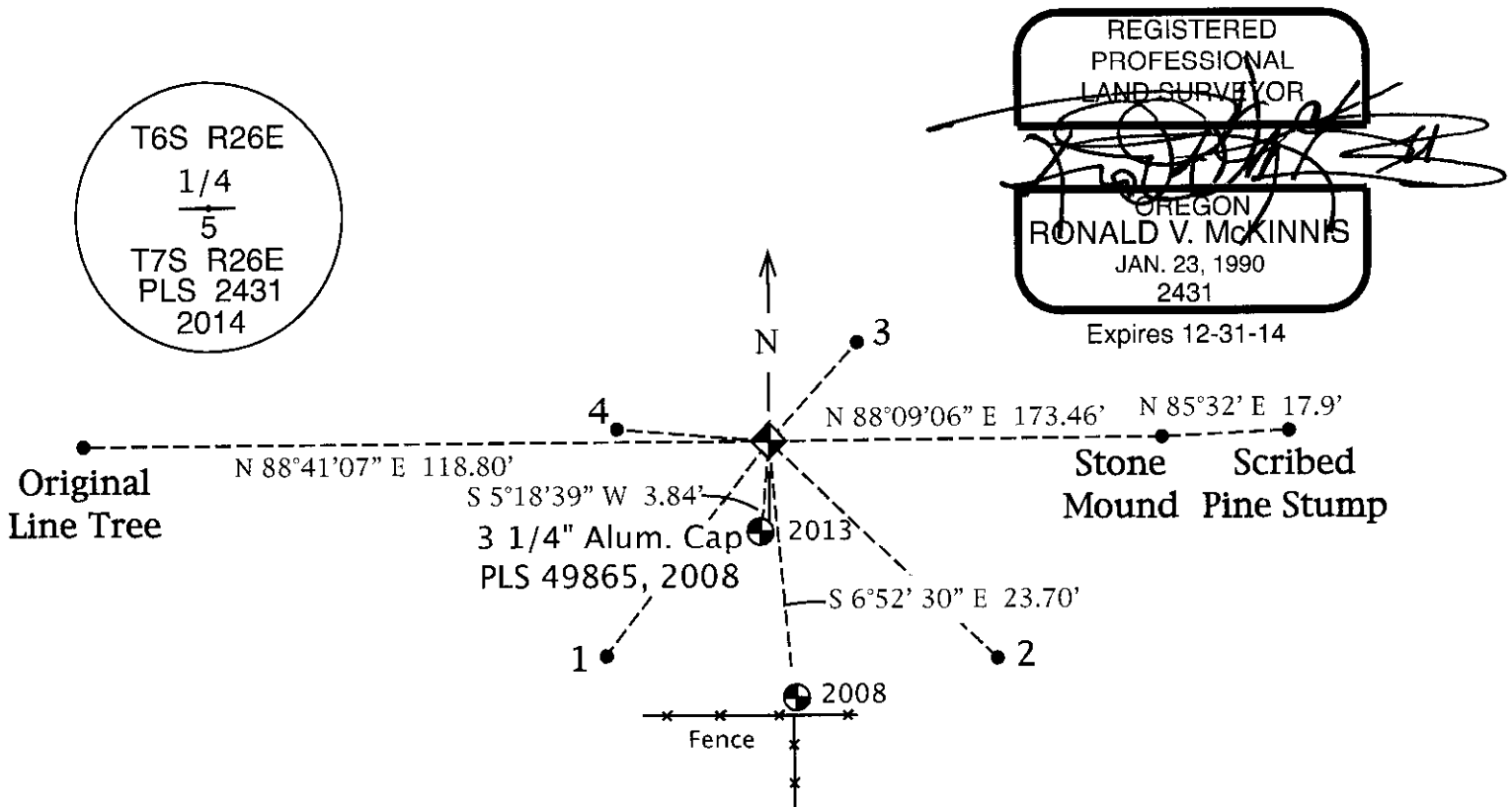
Stone fell exactly on Line & Distances as in York's notes. I accepted the Stone as the corner. Set 2 1/2" Brass Cap on 1" Iron Pipe with Found stone and others arranged around the brass cap. Set a steel fence post with monument sign just to the North of the cap. 3 1/4" Alum. Cap set by Delano, PLS 49865, in 2013 Bears S 05°18'39" W, 3.84'. In 2008 was S 06°52'30" E, 23.70'.

In addition, the following bearing trees were marked and tagged by Delano with placards and calls to his monument but are located a shown from my monument.

- 1 - A 14" Ø Ponderosa Pine w/ Balze & Scribe 1/4 S5 - bears S 38° 14' W 36.9 feet.
 - 2 - A 10" Ø Ponderosa Pine w/ Balze & Scribe 1/4 S5 - bears S 30° 19' E 37.2 feet.
- All directions on placards are given to the Delano set monument.

In additon 5/8" Rebar with Plastic caps markes FSE Control were found as follows.

- 3 - N 48° 42' 17" E 10.75 feet from New Monument to found Plastic Cap.
- 4 - N 89° 13' 47" W 10.86 feet from New Monument to found Plastic Cap.



Office of Surveyor County of Morrow
 State of Oregon I hereby certify that the within instrument was
 filed in this office for record on the 15th day of April, 2014
Stephen K. Hallmark by _____
 (COUNTY OFFICIAL) (DEPUTY)

Survey Number 2014-1697D