

Record of Land Corner Monumentation

Section 04 Township 7S Range 26E Code T7SR26E A11

County of Morrow Date: January 10, 2014

History of Original Corner Establishment:

The Original Monument was established in 1879 by A.F York in an Original GLO Survey of Township 7 South Range, 26 East under Contract No. 309. A. F. York completed the North boundary of Township 7 South, Range 26 East in 1878. E.W. Sanderson Retraced York's line a year later and held York's monuments.

York's Notes: A Yellow Pine 40" in Ø at 39.00 Chains (Line Tree)

Set Stone 15x9x6 for 1/4 Sec. Cor. at 40.00 Chains From which:

A Yellow Pine 36" in Ø Bears N 60° E 12 lks. dist.

A Yellow Pine 36" in Ø Bears S 78° W 108 lks. dist.

Sanderson's Notes: To a Pine 24" in Ø at 10.00 Chains

To a Stone 10x7x6 for 1/4 Sec. Cor, set by old survey at 11.00 Chains from which A Pine 24" in Ø Bears N 55° E 10 lks. dist.

Description of evidence found:

Found what I believe to be Original Line Tree and both Bearing Trees as decribed in York's notes for this Section Corner. Used distances as called in York's notes from the Bearing Trees to average the location of the Secion Corner.
No other evidence found.

Description of monumentation and accessories established to perpetuate the location of this Section Corner:

Set 2 1/2" Brass Cap on 1" Iron Pipe with steel fence post with monument sign North of the cap. Previous 3 1/4" Alum. Cap set by Delano, PLS 49865, in 2013 Bears S 82°55'50" W, 58.45'. Delano Cap set in 2008 was located N 88°27'34" W, 57.90'.

1 - A 38" Ø Ponderosa Pine (Original BT) bears N 62° 00' 24" E 8.0 feet, Blazed, Scribed "BT 1/4", and tagged with Placard and calls back to this new monument.

In addition, the following bearing trees were marked and tagged by Delano with placards and calls to his monument and located as follows from this New Monument.

2 - A 10" Ø Ponderosa Pine w/ Blaze & Scribe 1/4 S4 bears S 15° 20' E 31.8 feet.
3 - A 10" Ø Ponderosa Pine w/ Blaze & Scribe 1/4 S4 bears S 80° 13' W 112.2 feet.

In additon 5/8" Rebar with Plastic caps markes FSE Control were found as follows.

4 - N 85° 04' 28" W 73.58 feet from this New Monument to found Plastic Cap.
5 - N 81° 18' 14" W 47.61 feet from this New Monument to found Plastic Cap.
6 - Alum. Cap set by Delano, PLS 49865, in 2013 Bears S 82°55'50" W, 58.45'.

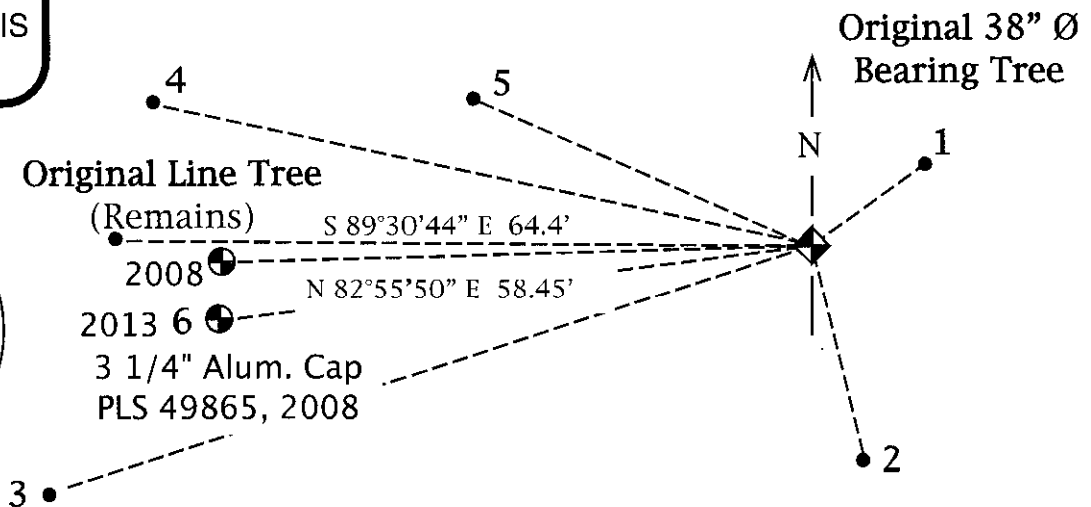
REGISTERED PROFESSIONAL LAND SURVEYOR



OREGON
RONALD V. MCKINNIS
JAN. 23, 1990
2431

Expires 12-31-14

T6S R26E
1/4
4
T7S R26E
PLS 2431
2014



Office of Surveyor County of Morrow
 State of Oregon I hereby certify that the within instrument was
 filed in this office for record on the 15th day of April, 2014
Stephen K. Haddock by _____
 (COUNTY OFFICIAL) (DEPUTY)

Survey Number 2014-16970