

Record of Land Corner Monumentation

Section 32-33 Township 06S Range 26E Code T6S R26E X09

County Morrow Date August 18, 2013

History of Original Corner Establishment:

The Original Monument was established in 1881 by E.W. Sanderson in an Original GLO Survey of Township 6 South Range, 26 East under Contract No. 368. Sanderson's Notes: Set Stone 12x12x8 in Stone Mound from which
A Pine 48" in Ø bears S 10° E 170 lks

Description of evidence found:

Found 1 of 1 Original Bearing Tree as decribed in Sanderson's notes for this Section Corner. Used the distance in Sanderson's notes to search for and locate corner. Found described Stone in stone mound.

Description of monumentation and accessories established to perpetuate the location of this Section Corner:

Found Stone in stone mound as described in Sanderson's notes.
Set 2 1/2" Brass Cap on 1" Iron Pipe in stone mound at the location of the found stone.

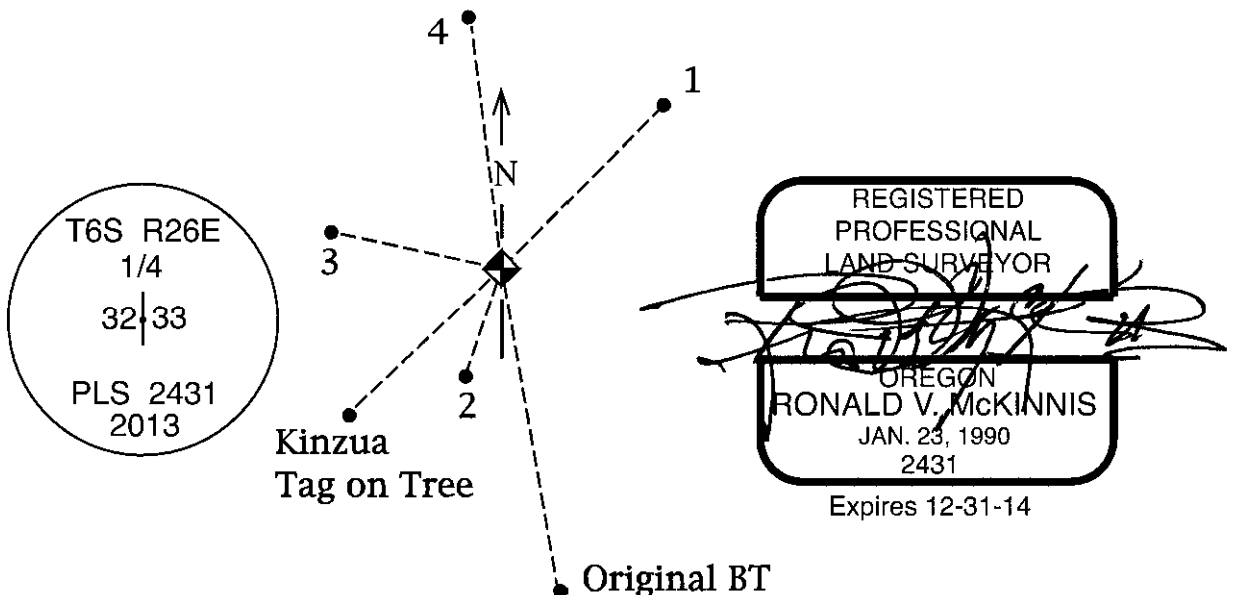
Found Original BT (16" Ø x 3' portion of a roten fallen stump w/ scribes)
S 09° 40' E 115.6 feet of set Monument.

Found 22" Ø Pine w/ Kinzua Placard all markings unlegible
S 45° W 69.1 feet of set Monument.

In addition, the following Bearing Trees were Blazed, Scribed, and tagged with placards as follows:

- 1 - A 20" Ø Ponderosa Pine bears N 18° 30' E 67.5 feet. Scribed "1/4 S33 BT"
- 2 - A 18" Ø Ponderosa Pine (Fence Corner) bears S 19° 12' W 9.7 feet. Scribed "1/4 S32 BT"
- 3 - A 18" Ø Ponderosa Pine (Wrapped in Barb Wire) bears N 78° 30' W 24.3 feet. Scribed "1/4 S32 BT"
- 4 - A 14" Ø Ponderosa Pine bears N 07° 30' W 81.7 feet. Scribed "1/4 S32 BT"

All directions on placards are given to the set monument.



Office of Surveyor County of Morrow

State of Oregon I hereby certify that the within instrument was

filed in this office for record on the 15th day of April, 2014

Alvin K. Hadlock by _____

(COUNTY OFFICIAL)

(DEPUTY)

Survey Number 2014-1697D