

Record of Land Corner Monumentation

Section 31-32 Township 06S Range 26E Code T6S R26E X05

County Morrow Date August 18, 2013

**History of Original Corner Establishment:**

The Original Monument was established in 1881 by E.W. Sanderson in an Original GLO Survey of Township 6 South Range, 26 East under Contract No. 368.

Sanderson's Notes: Set 30x20x14 Stone in Stone Mound from which  
A Pine 24" in Ø bears N 40° W 69 lks

**Description of evidence found:**

Found 1 of 1 Original Bearing Tree as decribed in Sanderson's notes for this Section Corner. Used the distance in Sanderson's notes to search for and locate the Stone as described and set at this corner.

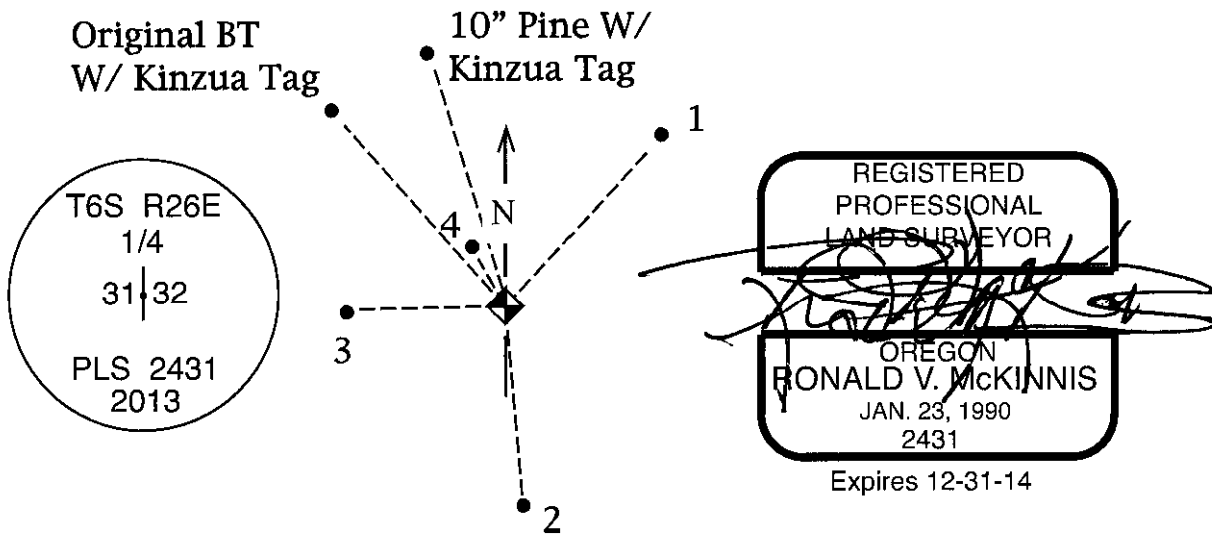
Found Original BT(16" Ø rotted & fallen stump w/ Scribe & Placard)  
N 40° 00' W 45.5 feet of set Monument.

Found 10" Ø Pine with Kinzua Placard marked Fnd. BT E.A.T. 9-26-81  
N 30° W 36.9 feet of set Monument.

**Description of monumentation and accessories established to perpetuate the location of this Section Corner:**

Found Stone as described in Sanderson's notes.  
Set 2 1/2" Brass Cap epoxyed in a drill hole in the top of the found Stone.  
In addition, the following Bearing Trees were Blazed, Scribed, and tagged with placards as follows:

- 1 - A 14" Ø Ponderosa Pine bears N 44° 05' E 47.5 feet. Scribed "1/4 S32 BT"
  - 2 - A 15" Ø Douglas Fir bears S 05° 30' E 41.5 feet. Scribed "1/4 S32 BT"
  - 3 - A 16" Ø Ponderosa Pine bears S 88° 30' W 21.7 feet. Scribed "1/4 S31 BT"
  - 4 - A 14" Ø Ponderosa Pine bears N 22° 30' W 12.3 feet. Scribed "1/4 S31 BT"
- All directions on placards are given to the set monument.



Office of Surveyor County of Morrow  
 State of Oregon I hereby certify that the within instrument was  
 filed in this office for record on the 15<sup>th</sup> day of April, 2014  
Allyson K. Hallock by \_\_\_\_\_  
 (COUNTY OFFICIAL) (DEPUTY)

Survey Number 2014-1697D