

Record of Land Corner Monumentation

Section 29-32 Township 06S Range 26E Code T6S R26E V07

County Morrow Date August 18, 2013

**History of Original Corner Establishment:**

The Original Monument was established in 1881 by E.W. Sanderson in an Original GLO Survey of Township 6 South Range, 26 East under Contract No. 368.

Sanderson's Notes: Set Stone 18x10x5 in Stone Mound from which

A Pine 24" in Ø bears N 40° E 71 lks

A Pine 36" in Ø bears S 10° E 83 lks

**Description of evidence found:**

Found 2 of Original Bearing trees as decribed in Sanderson's notes for this Section Corner. Used the distances in Sanderson's notes to reestablish the location of the corner. No other evidence found.

Found Original BT (26" Ø Low cut stump w/ scribe and Kinzua Placard)  
N 35° 06' E 47.0 feet of set Monument

Found Original BT (36" Ø x 5' High rotten stump w/ scribes & barbed wire)  
S 03° 53' E 54.5 feet of set Monument

**Description of monumentation and accessories established to perpetuate the location of this Section Corner:**

Used the distances in Sanderson's notes to reestablish the location of the corner. Set 2 1/2" Brass Cap on 1" Iron Pipe in mound of stones.

In addition the following Bearing Trees were Blazed, Scribed, and tagged with placards as follows:

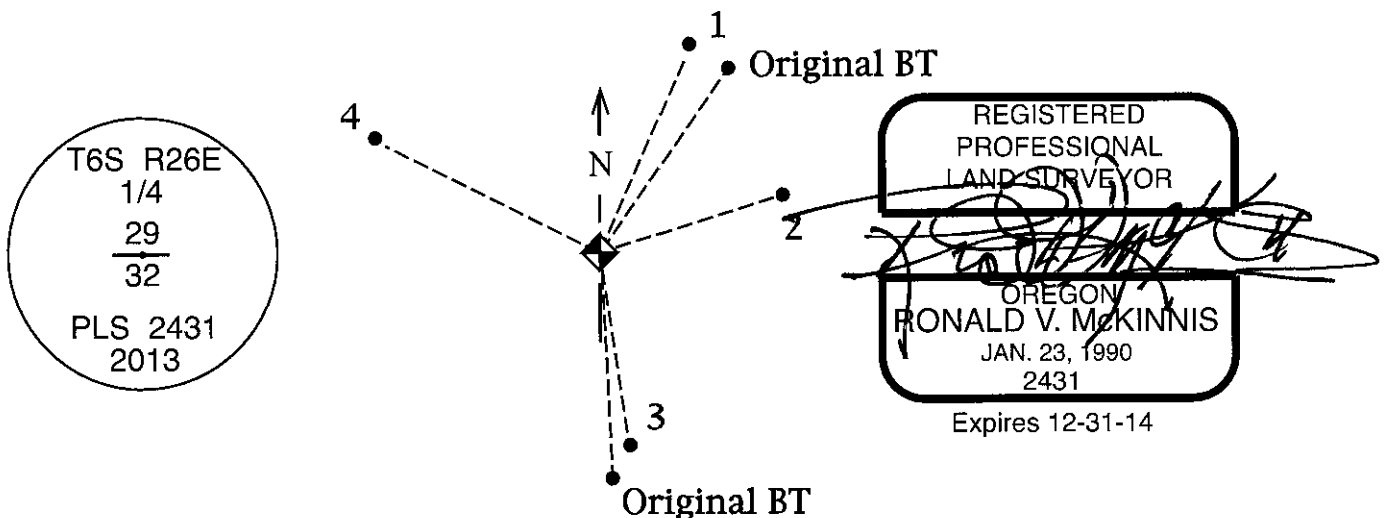
1 - A 21" Ø Ponderosa Pine bears N 23° 10' E 49.1 feet. Scribed "1/4 S29 BT"

2 - A 16" Ø Ponderosa Pine bears N 72° 27' E 41.8 feet. Scribed "1/4 S29 BT"

3 - A 18" Ø Ponderosa Pine bears S 07° 13' E 44.2 feet. Scribed "1/4 S32 BT"

4 - A 15" Ø Ponderosa Pine bears N 64° 07' W 51.2 feet. Scribed "1/4 S29 BT"

All directions on placards are given to the set monument.



Office of Surveyor County of Morrow  
 State of Oregon I hereby certify that the within instrument was  
 filed in this office for record on the 15<sup>th</sup> day of April, 2014  
Steph K. Halbrook by \_\_\_\_\_  
 (COUNTY OFFICIAL) (DEPUTY)

Survey Number 2014-16970