

Record of Land Corner Monumentation

Section 29-30-31-32 Township 06S Range 26E Code T6S R26E V05

County Morrow Date August 18, 2013

**History of Original Corner Establishment:**

The Original Monument was established in 1881 by E.W. Sanderson in an Original GLO Survey of Township 6 South Range, 26 East under Contract No. 368.

Sanderson's Notes: Set Stone 16x12x4 in Stone Mound from which

A Pine 30" in Ø bears N 58° E 42 lks

A Pine 24" in Ø bears S 10° E 104 lks

**Description of evidence found:**

Found 1 of 2 Original Bearing Trees & 1 Bearing Tree tagged by the Kinzua Corp. in the 1970's. Used the distance from Sanderson's notes that closely matched the Kinzua tag and found stone in stone mound located just to the northeast of the base of a 8" diameter Ponderosa Pine tree. Stone did not exactly match Sanderson's description but I held it as the best evidence at this corner.

Found Original BT (18" Ø low cut rotten stump with scribe) S 4° 14" E 64.1 Feet of set Monument & Kinzua Tag 8" Ø Ponderosa Pine S 85° 30' W 4.8 feet.

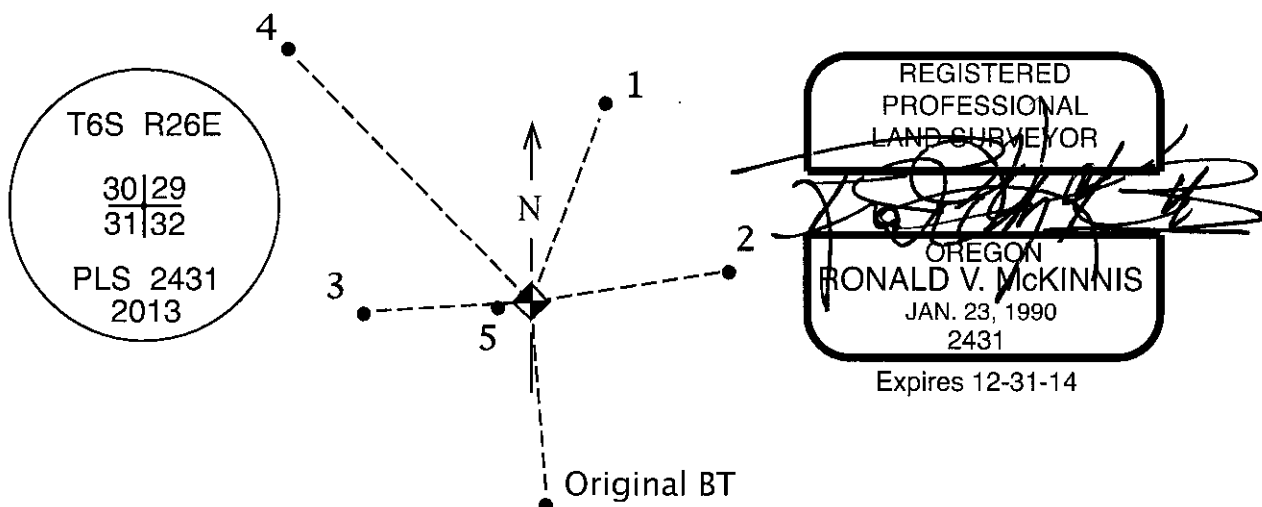
**Description of monumentation and accessories established to perpetuate the location of this Section Corner:**

Found stone in stone mound for this corner. Set 2 1/2" Brass Cap on 1" Iron Pipe in Stone Mound located just to the northeast 4.8' of the base of a 8" Ø Ponderosa Pine tree with Monument Sign and Kinzua tag.

In addition, the following Bearing Trees were Blazed, Scribed, and tagged with placards as follows:

- 1 - A 19" Ø Ponderosa Pine bears N 20° 36' E 29.8 feet. Scribed "6S 26 S29 BT"
- 2 - A 10" Ø Ponderosa Pine bears N 81° 10' E 32.4 feet. Scribed "6S 26 S29 BT"
- 3 - A 15" Ø Ponderosa Pine bears S 87° 37' W 22.3 feet. Scribed "6S 26 S31 BT"
- 4 - A 18" Ø Douglas Fir bears N 44° 40' W 50.2 feet. Scribed "6S 26 S30 BT"
- 5- A Kinzua Tag 8" Ø Ponderosa Pine bears S 85° 30' W 4.8 feet.

All directions on placards are given to the set monument.



Office of Surveyor County of Morrow  
 State of Oregon I hereby certify that the within instrument was  
 filed in this office for record on the 15<sup>th</sup> day of April, 2014  
Stephen K. Fladdock by \_\_\_\_\_  
 (COUNTY OFFICIAL) (DEPUTY)

Survey Number 2014-1697D