

Record of Land Corner Monumentation

Section 30-31 Township 06S Range 26E Code T6S R26E V03

County Morrow Date August 18, 2013

**History of Original Corner Establishment:**

The Original Monument was established in 1881 by E.W. Sanderson in an Original GLO Survey of Township 6 South Range, 26 East under Contract No. 368.

Sanderson's Notes: Set Stone 14x11x7 in Stone Mound

**Description of evidence found:**

Found 2 Bearing Trees tagged by the Kinzua Corp. in the 1970's. Used the distances on the tags and found stone in stone mound as described and set by Sanderson at this corner. No bearing trees were described in Sanderson's notes.

Found Kinzua Placard on 12" Ø Pine S 89° 22' E 44.6' of Mon. marked "1/4 Cor. West 13 paces 1-24-75"

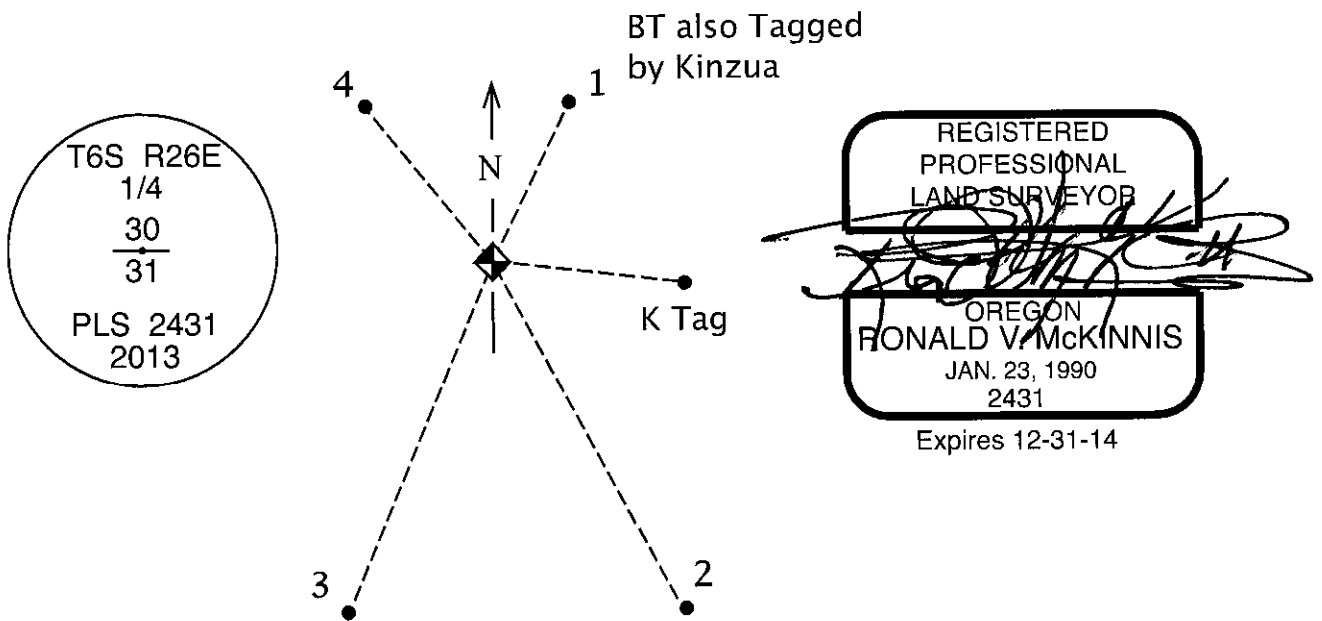
**Description of monumentation and accessories established to perpetuate the location of this Section Corner:**

Found stone as in Sanderson's notes in stone mound for this corner. Set 2 1/2" Brass Cap on 1" Iron Pipe in Stone Mound.

In addition, the following Bearing Trees were Bazed, Scribed, and tagged with placards as follows:

- 1 - A 16" Ø Ponderosa Pine bears N 27° 34' E 45.8 feet. Scribed "1/4 S30 BT"
- 2 - A 13" Ø Ponderosa Pine bears S 30° 30' E 89.1 feet. Scribed "1/4 S31 BT"
- 3 - A 12" Ø Ponderosa Pine bears S 22° 30' W 90.3 feet. Scribed "1/4 S31 BT"
- 4 - A 14" Ø Ponderosa Pine bears N 39° 04' W 52.0 feet. Scribed "1/4 S30 BT"
- K Tag - A 12" Ø Ponderosa Pine bears S 89° 22' E 44.6 feet.

All directions on placards are given to the set monument.



Office of Surveyor County of Morrow  
 State of OREGON I hereby certify that the within instrument was  
 filed in this office for record on the 15<sup>th</sup> day of April, 2014  
Stephen K. Hallock by \_\_\_\_\_  
(COUNTY OFFICIAL) (DEPUTY)

Survey Number 2014-1697D