

Record of Land Corner Monumentation

Section 30 Township 06S Range 26E Code T6S R26 T01

County Morrow Date August 18, 2013

History of Original Corner Establishment:

The Original Monument was established in 1881 by E.W. Sanderson in an Original GLO Survey of Township 6 South Range, 26 East under Contract No. 368. Sanderson also completed the boundary of Township 6 South, Range 25 East in 1881 after he completed 6 South, 26 East. The quarter corners are not shared between adjacent sections of the two townships.

Sanderson's Notes: Set Stone 14x12x4 in Stone Mound from which
A Pine 18" Ø bears S 30° E 69 lks.

Description of evidence found:

Found 1 of 1 original Bearing Tree as decribed in Sanderson's notes for this Section Corner. Used the distance in Sanderson's notes to search for the location of the corner. Found described Stone in stone mound.

Found Original BT (Rotten Stump 24" Ø w/ Scribe) Located S 48°30' E 44.7' of set Monument .

Kinzua Placard found on 20" Ø x 12" Stump S 10° W 6.0'

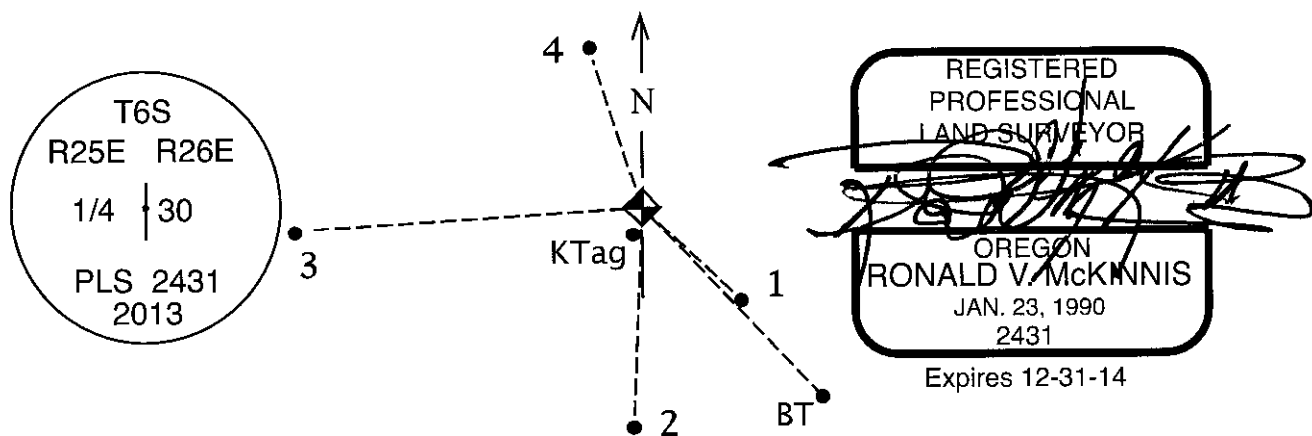
Description of monumentation and accessories established to perpetuate the location of this Section Corner:

Found Stone in stone mound as described in Sanderson's notes.
Set 2 1/2" Brass Cap on 1" Iron Pipe in stone mound at the location of the found Stone.

In addition, the following Bearing Trees were Blazed, Scribed "1/4 S30 BT" and tagged with placards as follows:

- 1 - A 12" Ø Juniper bears S 47° 47' E 13.6 feet.
- 2 - A 14" Ø Juniper bears S 01° 24' W 20.7 feet.
- 3 - A 17" Ø Ponderosa Pine bears S 84° 27' W 195.2 feet.
- 4 - A 18" Ø Juniper bears N 18° 34' W 30.5 feet.

All directions on placards are given to the set monument.



Office of Surveyor County of Morrow
 State of Oregon I hereby certify that the within instrument was
 filed in this office for record on the 15th day of April, 2014
Steph K. Hallock by _____
(COUNTY OFFICIALS) (DEPUTY)

Survey Number 2014-16970