

OREGON CORNER RESTORATION FORM

COUNTY: Morrow DATE: 08/19/21.

CORNER DESIGNATION: N-19, the North 1/4 Corner of Section 23, Township 5 South, Range 26 East, W.M.

PREVIOUS RENEWALS/SURVEYS ETC: Corner was originally established by Everett A. Thatcher, Deputy Surveyor, under Contract No. 325, dated June 4, 1879. Notes state:

Set stone, 9 x 9 x 7 for 1/4 Sec. Cor., from which:
A Pine 24 in. in dia. bears N 15° W, 28 lks. dist.
A Pine 15 in. in dia. bears S 6° W, 23 lks. dist.

Morrow County Survey Records, Folder 1168, Book 2, Page 4B, dated 10/24/1907, indicate a survey made for Scott Osborn, by V.H. Heath, Morrow County Surveyor. In reading through this survey, I note the Survey was in T5S., R 25E., W.M., **NOT** T5S., R26E., W.M.

Morrow County Survey Records, Folder 1177, Book 2, Page 9B, dated May 29, 1909, a survey was made for R. Hogeland, by D.V.S. Reid, Morrow County Surveyor. D.V.S. Reid's notes state he found the 1/4 corner and ran North from it. Reid does not state what was found for the 1/4 corner monument.

MONUMENT AND ACCESSORIES FOUND: At the location of the corner, I find an old standing North-South fence line, with down fence remains, (old wire and rock mounds), extending East. There is an old rock crib in the North-South fence line close to the corner point. There are no live trees old enough to be original bearing trees in the corner area, but there are a few old stumps rotted and weathered down to about a foot above the ground surface. I computed the stump pattern for the two original bearing trees and found two old stump stubs exactly corresponding to the record bearing and distance between the original bearing trees. I re-established corner point from the two original stumps. The position falls in the North-South fence just North of the rock crib. I removed the stones from the rock crib and at the bottom of the crib found a 19 x 12 x 5" stone, clearly marked "1/4".

MONUMENT MARKING DETAIL:

T5S R26E
S14
1/4 -----
S23
2021
PLS 1106

MONUMENT SET: At the reestablished corner point I set a 5/8 by 24 inch rebar 21 inches in the ground with a 2 inch aluminum cap marked as shown in Monument Marking Detail. I built a rock mound around the corner monument and placed the marked stone North of the corner monument. I nailed a "Witness" sign to the top of a wood post in the rock crib, 2 1/2 feet south of the corner monument. From which:

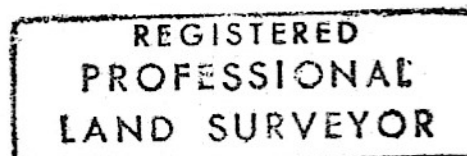
A weathered pine stump, 1 foot above ground, bears N 15° W, 28 lks. = 18.5 feet., (original BT).
A weathered pine stump, 1 foot above ground, bears S 6° W, 23 lks. = 15.2 feet., (original BT).
New bearing tree accessories:

A 12 inch ponderosa pine bears N 54° E, 89.7 feet, scribed 1/4 S14 BT on single blaze.
A 20 inch ponderosa pine bears S 72° E, 140.5 feet, scribed 1/4 S23 BT on single blaze.
An 8 inch forked juniper, with an 8 inch base bears S 63° W, 134.2 feet, scribed "X", 3 1/2 feet above ground on a 4 inch stem and BT at base of the 8 inch juniper.
A 10 inch ponderosa pine bears N 69° W, 87.9 feet, scribed 1/4 S14 BT on single blaze.
Nailed "bearing tree" signs to the new bearing trees. Measured accessories with steel tape and Brunton pocket compass with 14° E declination.

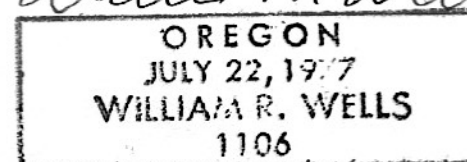
LOCATION AND COMMENTS: Corner is located on an open ridge in a North-South fence line.

FIRM: Wells Surveying
P.O. Box 1696
Pendleton, OR 97801

Surveyor's Seal



William R. Wells



renews 6-30-24

\5S26N-19

RECEIVED BY
Morrow County Surveyor
Date: 4-4-2023
Rec'd By: MPK
No.: 55 26 N19
Folder No.: _____