

OREGON CORNER RESTORATION FORM

SECTION SE SEC 31 TOWNSHIP 5 N RANGE 27E..W.M.

COUNTY MORROW DATE 11/09/98

CORNER DESIGNATION

Z-5

CONDITION REPORT ONLY
 NOT FOUND
 RENEWED
 UNRECORDED
 SURVEYED IN
 REFERENCED OUT

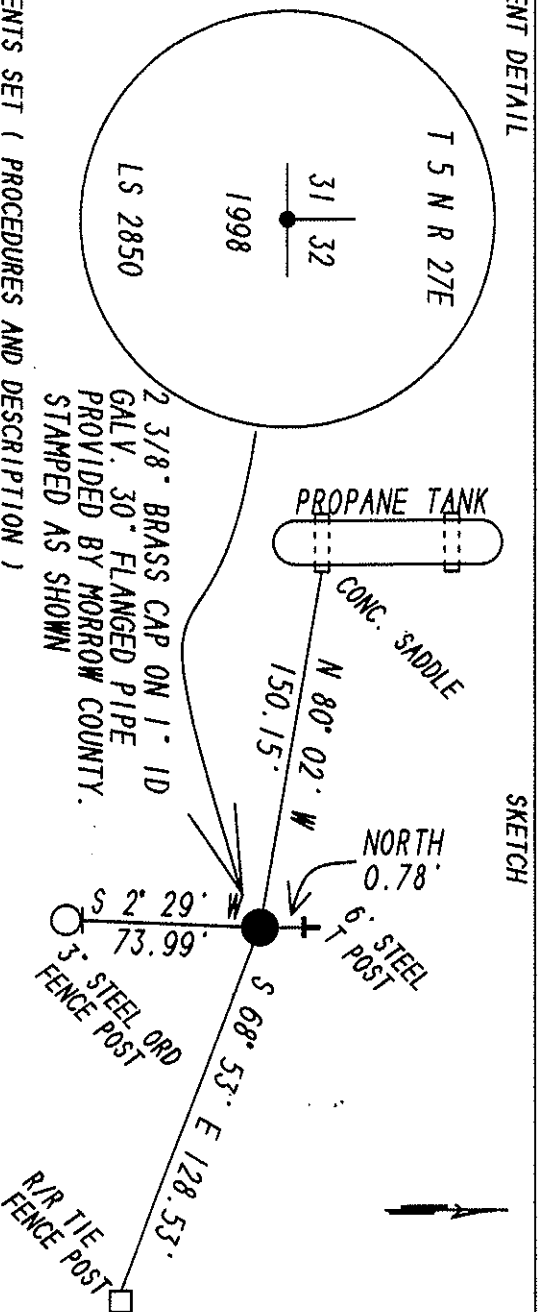
PREVIOUS RENEWALS / SURVEYS, ETC. ORIG. SURVEY BY MAXON AND HURD IN 1860.

DEPENDENT RESURVEY OF 1st STANDARD PAR. N. S BOUNDARY T5N.R27E. BLM 1941.

MONUMENT (S) & ACCESSORIES FOUND: (CONDITION AND SOURCE)

FOUND 2 3/8" 1941 BLM BRASS CAP ON PIPE. THIS MONUMENT LEANING ON FENCE 130° EAST OF CORNER. THE AREA WHERE CORNER SHOULD HAVE BEEN WAS GRADED FOR A TRUCK LOADING AREA.

MONUMENT DETAIL



MONUMENTS SET (PROCEDURES AND DESCRIPTION)

NO EVIDENCE OF 1860 SURVEY WAS FOUND. THE MONUMENT SET IN 1941 BY THE BLM WAS LEANING ON THE FENCE ABOUT 130 EAST. THE AREA WHERE MONUMENT SHOULD HAVE BEEN HAD BEEN GRADED FOR A TRUCK LOADING AREA SO NO EVIDENCE OF PITS DUG BY THE BLM REMAINED. THE 1941 DEPENDENT SURVEY BY THE BLM RAN FROM FOUND MONUMENT TO FOUND MONUMENT OR FOUND EVIDENCE AND DID NOT RUN THE TRUE PARALLEL AS THE 1860 ORIGINAL SURVEYOR'S WERE INSTRUCTED TO DO, RUNNING FROM MONUMENT TO MONUMENT BY THE BLM RESULTED IN A DEFLECTION ANGLE AT THE SE CORNER OF SECTION 31 WHICH I COMPUTED AS 0° 20' LEFT FROM THE BLM RECORD BEARINGS. THEREFORE I HELD THIS DEFLECTION ANGLE AND USED PROPORTIONAL DISTANCE TO SET THE SE CORNER OF SECTION BETWEEN THE FOUND GLO MONUMENT AT THE SW CORNER OF SECTION 31 AND THE FOUND BLM MONUMENT AT THE SE CORNER OF SECTION 32. T 5 N. R 27 E..W.M. NEW ACCESSORIES

1. A SCRIBED LOCATION POSTER BEARS N 80° 02' W 150.15 FEET FROM THE CORNER. IT IS ON THE E FACE OF A PROPANE TANK CONC. SADDLE.
2. A SCRIBED LOCATION POSTER BEARS S 68° 53' E 128.53'. IT IS ON THE W FACE OF A R/R TIE FENCE POST.
3. A SCRIBED LOCATION POSTER BEARS S 02° 29' W 73.99'. IT IS ON A 3" STEEL ORD. DEPOT FENCE POST.
4. A WARNING SIGN AND LOCATION POSTER BEARS NORTH 0.78'. IT IS ON A 6" LONG STEEL T POST.
5. DUG A 6" X 6" TRENCH WITH A 2" DIA. AROUND MONUMENT. MONUMENT FLUSH WITH ORIG. GROUND.

LOCATION & COMMENTS

FROM THE LOCATION WHERE MORROW COUNTY ROAD KNOWN AS "DEPOT ROAD" ENTERS THE THE UMATILLA ORDANCE DEPOT'S NORTH BUFFER ZONE AND NORTH OF THE ORDNANCE DEPOT'S FENCE. GO EAST ALONG AN APPLE ORCHARD ON AN UNIMPROVED ROAD ABOUT 3000 FEET TO THE CORNER.

BEARING BASE

COMPASS DECLINATION STAEBLER 1972
 FIRM/AGENCY
COPPOCK SURVEYING

ADDRESS
P. O. BOX 340
HERMISTON, OR. 97838
 PARTY CHIEF
JUDSON L. COPPOCK
 NOTES SHANNON BENEFIT

SURVEYOR'S SEAL

REGISTERED
 PROFESSIONAL
 LAND SURVEYOR

Judson L. Coppock

OREGON
 JANUARY 20, 1988
 JUDSON L. COPPOCK
 2850

RENEWAL DATE: DEC. 31/99

WITNESS SHANNON BENEFIT