

OREGON CORNER RESTORATION FORM

SECTION: 35 TOWNSHIP: 5N RANGE: 26E Z-21

COUNTY: UMATILLA DATE: 4/2014

CORNER DESIGNATION

SE COR. S35

- CONDITION REPORT ONLY**
- NOT FOUND**
- RENEWED**
- UNRECORDED**
- SURVEYED IN**
- REFERENCED OUT**

PREVIOUS RENEWALS/SURVEYS ETC.

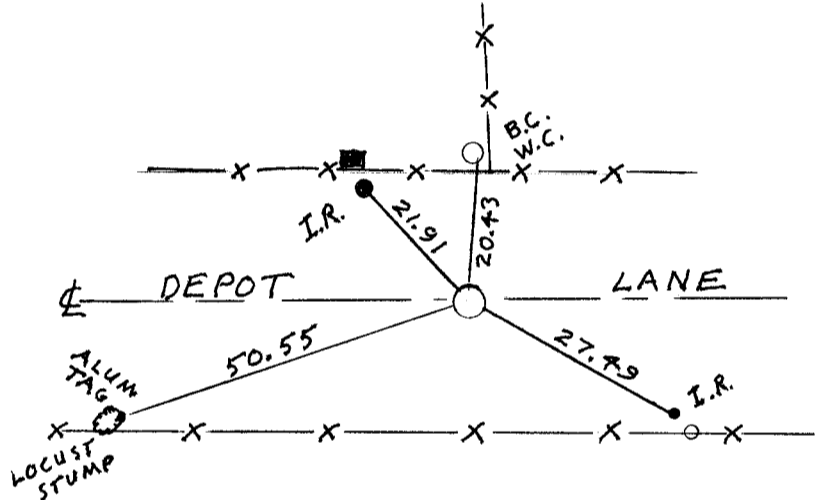
Originally surveyed by Thompson and others in 1869 under contract 131.
 In 1915 Ganong did a resurvey.
 In 1939 Gould did a dependent resurvey.
 In 2003 I set a 1" iron pipe with a 2 3/8" Brass Cap over 3" brass cap stamped 1915 which was 1' deep.
 In 2003 I set an alum. tag stamped 951 in a locust tree stump S 69° 39' W 50.55' from the corner.

MONUMENTS AND ACCESSORIES FOUND: CONDITON AND SOURCE

By retracing my CS#1695 I set a PK nail over my 2003 Brass Cap which has been paved over.
 Found 1939 Gould 2 1/2" Brass Cap W.C. (30 links North) N 2° 38' E 20.43 feet. (Disturbed by fence construction).
 Found 2003 alum. tag stamped 951 in a locust stump S 69° 39' W 50.55 feet from the corner.

MONUMENT DETAIL

SC
 T5N R26E
 S35/S36
 S1
 T4N R26E
 2003
 LS 951



MONUMENT SET (PROCEDURES AND DESCRIPTION)

By retracing my 2003 survey CS#1695, I set a PK nail over my 2 3/8" Brass Cap which was paved over about two years ago.

NEW ACCESSORIES FROM WHICH

A 5/8" x 30" Iron Rebar with plastic cap #951 bears S 49° 20' E 27.49'.
 A 5/8" x 30" Iron Rebar with plastic cap #951 bears N 41° 11' W 21.90'.

LOCATION AND COMMENTS

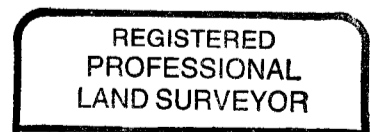
From the intersection of 8th Road West and Depot Lane, go East along Depot Lane 1 mile to corner.

SURVEYOR'S SEAL

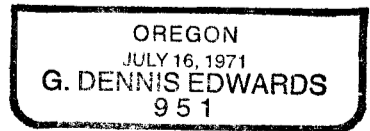
RECEIVED BY
 Morrow County Surveyor
 Date: 2-25-2016
 Rec'd By: S.K.H.
 No.: 5N 26 Z 21
 Folder No.:

FIRM: EDWARDS SURVEYING LLC
PO BOX 763 - HERMISTON OR 97838

PARTY CHIEF: G. EDWARDS
WITNESS: R. FRITZ



G. Dennis Edwards



RENEWS 12/31/15