

CERTIFIED RECORD OF LAND CORNER MONUMENTATION

History of original corner establishment:

Morannon County

T5N - R26 - Sect. 25

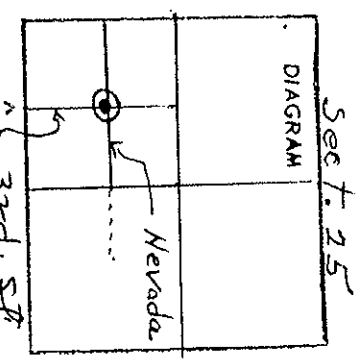
Center - SW 1/4

Center 3rd & Nevada

Set by one land & water subdivision

Worthington plat of 1906

Set concrete monument

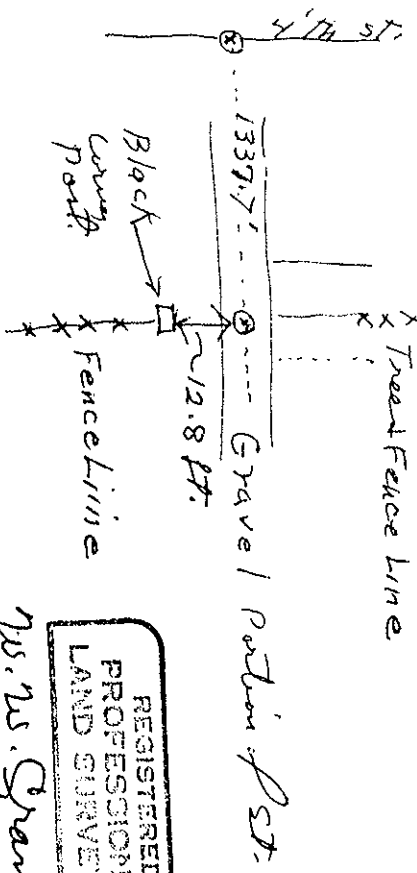


Description of corner evidence found:

Concrete cylinder 0.7 ft diam. 1.1 ft high
Bears road at center

Description of monument and accessories established to perpetuate the original location of this corner

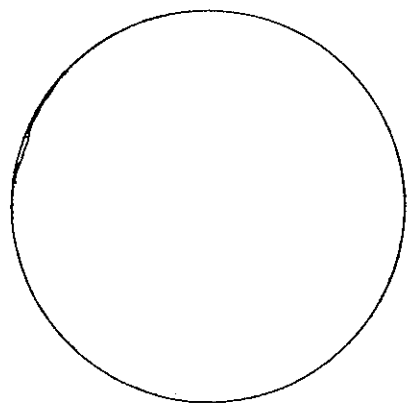
Set U bar about 18" long with R.R. spike driven into U
Pivoted over center Brown Road
Tree Fence Line



REGISTERED
PROFESSIONAL
LAND SURVEYOR

W.S. Spencer

OREGON
SEPT. 30, 1977
WALTER W. CHAMBER
1423



Office of County of

State of, I hereby certify that the within instrument was filed in this office
for record on the day of

(COUNTY OFFICIAL) by (DEPUTY)