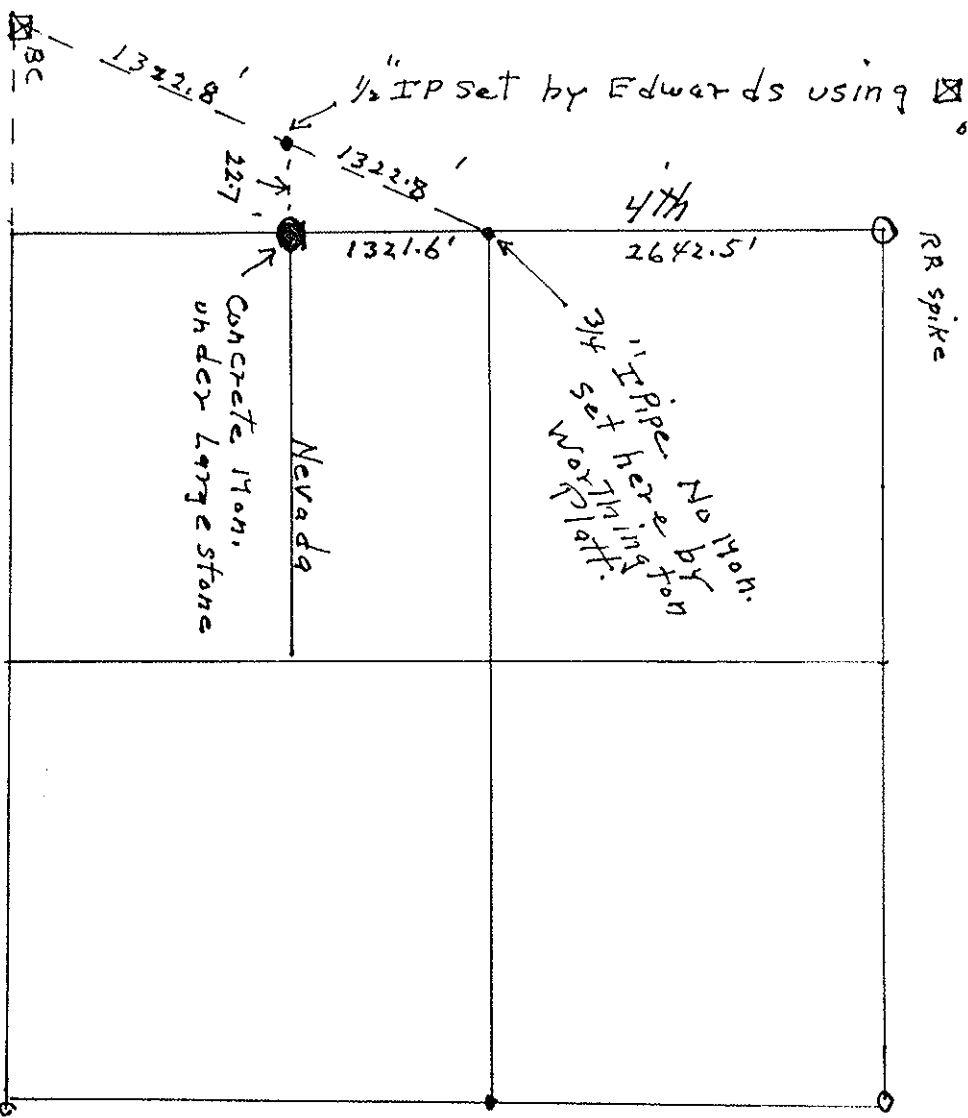


4-21

4-21

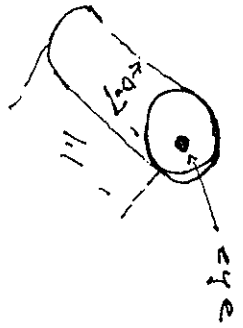
Report of Monuments Found

IRRIGATOR AREA - MORROW CITY,
T5N/R16E, Sect 35



Corner set by Krumbein by "dbl Prop." in place
of Platt retracement. Survey for "Pioneer
Escrow" 12-3-76

at corner of Nevada + 4th Sts. as shown
on "Worthington" Platt (H. Tamblin 1935)
I found large stone under Fence line +
at exact position on Platt. In digging under
stone (for better evidence) I found a
concrete monument 0.7 ft diam, & 1.1 ft
long



RECEIVED BY

Morrow County Surveyor

Date 4-25-80

Rec'd By MMTI

No. # 295-K

REGISTERED
PROFESSIONAL
LAND SURVEYOR

CLARENCE
WALTER W. CRAMER
1903

No. No. Spamer

No. No. Spamer

PLS- 4-6-80

295-K