

CERTIFIED RECORD OF LAND CORNER MONUMENTATION

History of original corner establishment:

Corner established by E.W. Sanderson in 1882 under Contract No. 417

1882 GLO Record:

From the corner of Secs. 5, b, 31 and 32 on S. bdy of Tp which is a sandstone 15x15x8 inches firmly set in ground with 5 notches on E. and 1 notch on W. edges from which:

- A black pine 8" dia. bears N.30°E., 9 lks. dist., marked T4S R29E S32 BT.
- A black pine 6" dia. bears N.30°W., 6 lks. dist., marked T4S R29E S31 BT.
- A black pine 8" dia. bears S.45°W., 12 lks. dist., marked T5S R29E S6 BT.
- A black pine 6" dia. bears S.15°E., 9 lks. dist., marked T5S R29E S5 BT.

1938 GLO Record:

The cor. of Secs. 31 and 32 only which is a basalt stone, 12x10x8 ins., firmly set, mkd. with 5 grooves on E. and 1 groove on W. face.

At point for corner, set an iron post, 3 ft. long, 3 ins. dia., 27 ins. in the ground, with the original stone deposited at the base for cor. of Secs. 31 and 32 only, with brass cap mkd.

- T4S R29E from which: A lodgepole pine 4" dia. dead and down, bears N.30°W., 6 lks. dist., marked T4S R29E S31 S32
- S31 BT (Old BT)
- A tamarack 14" dia. bears N.48°E., 36 lks. dist., marked T4S R29E S32 BT (New BT)
- T5S R29E A tamarack 7" dia. bears N.59°W., 59 lks. dist., marked T4S R29E S31 BT (New BT)
- S 6
- 1938

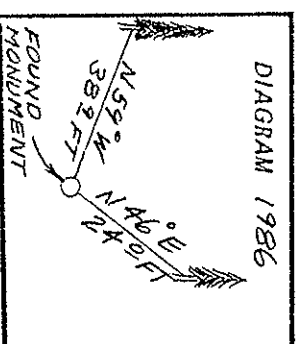
Description of corner evidence found:

Found 2 1/2 inch G.L.O. brass cap 6 inches above ground.

2 foot diameter mound of stone at monument north side.

- 19 inch larch bears N.46°E. 24.0 feet, healed face.
- 13 inch larch bears N.59°W. 38.9 feet, healed face.

Approximately 100 feet north to road 170



Marked:

T4S	R29E
S31	S32
T5S	R29E
S6	
1938	

Description of monument and accessories | established to perpetuate the original location of this corner:

Set brass washers in scars of found BIs

54-3, and 54-9 or 54-4 signs on all bearing trees. Trees have red band and blazes are painted red. Brass washer nailed to BI portion of blaze on new bearing trees and on old bearing trees if needed. Steel guard post with 54-9 or 54-4 sign set 0 to 6 feet from corner. Distance measured in horizontal feet to center of tree. Bearings measured with magnetic compass, 20° East declination.

CERTIFICATION

I, Ken E. Jenkins

certify the information shown herein is true and correct.

REGISTERED PROFESSIONAL LAND SURVEYOR

Signature of Ken E. Jenkins

Signature of Tom Hanson

by me Ken E. Jenkins Registered Professional Surveyor

by me Tom Hanson Registered Professional Surveyor

105818

OREGON Surveyor's Seal

JUNE 10, 1978

THOMAS W. HANSON

1058

PROFESSIONAL CONSULTANTS

Office of Stanley County of Herron

State of Oregon, I hereby certify that the within instrument was filed in this office

for record on the 11th day of November, 1986

David H. Kline by Ken E. Jenkins

(COUNTY OFFICIAL) (DEPUTY)