

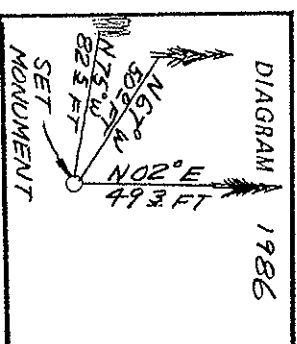
CERTIFIED RECORD OF LAND CORNER MONUMENTATION

History of original corner establishment:

1882 RECORD: Surveyed by E.W. Sanderson, 1882, Contract No. 417
40.00 set sandstone 18 x 10 x 3 ins 12 ins in ground from 1/4 sec cor
marked 1/4 on W. face.

From which:

A pine 10 ins. diam bears N. 70° E., 90 lks. dist., marked 1/4 S BT
A pine 28 ins. diam bears N. 75° W., 125 lks. dist. marked 1/4 S BT



Description of corner evidence found:
No Original monument found.

- Original pine stump 28" dia. bears N. 75° W., 82.5 feet (old chopped open scar ax marks on piece of this stump found laying 10 feet from stump). We position cor. from this stump. This tree was not logged as were others in the area.
- 36" dia. pine with old K-Tag marked in 1929, 1949, 1955 on west side bears N. 62° W., 19.5 feet (no ties on K-Tag)
- Several blazed trees to north from a line leading to corner position as established. Blazes are grown over and thought to be at least 50 years old.
- Corner is at edge of "old" road - approximately 30 feet north of Road 040.

Description of monument and accessories established to perpetuate the original location of this corner:

- At position as determined by found, original N.W. B.T. set 3-1/4 inch PCI alum. cap on 2-1/2 x 30 inch aluminum pipe 28 inches in the ground. Marked: T4S R29E 1/4 S19 | S20 PLS 1058 1986
- 30 inch dia. mound of stone about corner.
- 10 inch ponderosa pine bears N. 02° E., 49.3 feet marked: 1/4 S 20 BT
- 10 inch dia. fir bears N. 02° E., 49.3 feet marked: 1/4 S 20 BT

54-3, and 54-9 or 54-4 signs on all bearing trees. Trees have red band and blazes are painted red. Brass washer nailed to BT portion of blaze on new bearing trees and on old bearing trees if needed. Steel guard post with 54-9 or 54-4 sign set 0 to 6 feet from corner. Distance measured in horizontal feet to center of tree. Bearings measured with magnetic compass, 20° East declination.

CERTIFICATION
I, Ken E. Jenkins
certify the information shown herein is true and correct.

REGISTERED
PROFESSIONAL
LAND SURVEYOR

Ken E. Jenkins
State Surveyor
Thomas M. Hanson
Ground Party Chief
certify that the information herein represents work performed by me or under my direct supervision

OREGON
JUNE 18, 1976

OREGON
State Surveyor & Seal
Date: 7/20/86
1058
PROFESSIONAL CONSULTANTS

Office of.....*SUNNYVA*..... County of.....*Marion*.....
State of.....*Oregon*....., I hereby certify that the within instrument was filed in this office
for record on the.....day of.....*November*....., 1986
.....*David H. Wilson*..... by.....
(COUNTY OFFICIAL) (DEPUTY)