

RECORD OF LAND CORNER MONUMENTATION

SW CORNER SECTION 14, T. 4 S., R. 28 E., W.M.

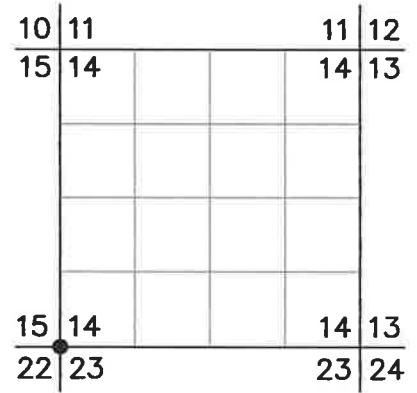
ORIGINALLY ESTABLISHED BY: Frank W. Campbell, U.S. Deputy Surveyor

CONTRACT NUMBER: 507

CONTRACT DATE: June 28, 1884

SUBSEQUENT SURVEYS:

- ▶ Remonumentation performed by A. Joseph Garrison, Cadastral Surveyor for the Bureau of Land Management, under Group No. 1000, completed July 1, 1982
- ▶ Remonumentation performed by Douglas M. Ferguson, PLS 848, see corner certificate filed January 10, 1986 in the Morrow County Surveyor's records



1884 G.L.O. DESCRIPTION: Set a post 4 ft. long, 4 ins square, 24 ins in the ground for cor. to secs 14, 15, 22 & 23 marked T4S S14 on N.E., R28E S23 on S.E., S22 on S.W. and S15 on N.W. faces with 3 notches on S. and 2 notches on E. edges, from which

- A fir 24 ins in diam. bears N75°E, 9 lks dist, marked T4S R28E S14 B.T.
- A tamarack 20 ins in diam. bears S65°E 28 lks dist, marked T4S R28E S23 B.T.
- A fir 28 ins in diam. bears S25°W, 86 lks dist, marked T4S R28E S22 B.T.
- A fir 28 ins in diam. bears N43°W, 6 lks dist, marked T4S R28E S15 B.T.

1982 B.L.M. DESCRIPTION: At the corner point (which B.L.M. determined at record distance from the remains of the original bearing trees), set an aluminum post, 28 ins. long, 2½ ins. diam., 24 ins. in the ground, with aluminum cap mkd. from which new bearing trees

- A fir, 15 ins. diam., bears S.59°E., 18 lks. dist., mkd. T4S R28E S23 BT.
- A fir, 12 ins. diam., bears S.71°W., 12½ lks. dist., mkd. T4S R28E S22 BT.
- A fir, 7 ins. diam., bears N.30°W., 18½ lks. dist., mkd. T4S R28E S15 BT.

1986 FERGUSON DESCRIPTION: Found a 3-1/2" aluminum cap monument, stamped as shown on the DIAGRAM
 Found a Fir, 30" dia., an original bearing tree, in the NE (S14) Quadrant, dead.
 Found three new bearing trees as taken by the BLM, in 1982, live, in good condition.
 Scribed a New Bearing Tree, A Spruce, 12" dia. Bears, N53°E., 30.0 ft. scribed, T4S R28E S14 BT.

EVIDENCE FOUND: Found a 2½" aluminum pipe with attached 3¼" B.L.M. aluminum cap (marked as shown below), projecting 4" above ground with no visible mound of stone. From which:

- A fir snag, 30" dbh bears N.75°E., 5.9 ft. with scribing visible (scribed by G.L.O. in 1884)
- A 6 ft. tall snag bears S.71°W., 8.3 ft. with full scribe visible (scribed by B.L.M. in 1982)
- An Engelmann spruce, 16" dbh bears N.53°E., 30.0 ft. with healed blaze (scribed by Ferguson in 1986)
- All other bearing trees are dead and down

DESCRIPTION OF MONUMENTS AND ACCESSORIES SET AND METHODS USED:

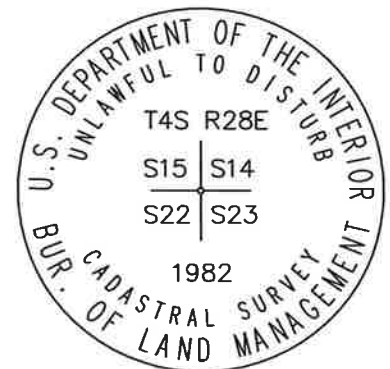
I accept the found aluminum monument for the true corner position.

From which, I SCRIBE THE FOLLOWING NEW BEARING TREES:

- ▶ A western larch, 13" dbh bears S.19°E., 21.15 ft. marked "T4SR28ES23" in upper blaze and "BT" in lower blaze
- ▶ A western larch, 11" dbh bears N.71°W., 37.1 ft. marked "T4SR28ES15" in upper blaze and "BT" in lower blaze

Painted a 6 inch red band around the bearing trees, and also painted the blazes red, and attached USFS signs 54-3 and 54-9. Distances measured with an EDM, measuring to a 60d nail set in the side-center-right at the root crown of each BT. Bearings were measured with a magnetic compass with 14° East declination.

MONUMENT MARKED:



RESTORATION BY, STAMP AND DATE:

Work Performed September 30, 2021 by:

Jason L. Hatfield, PLS

USDA FOREST SERVICE
 NORTHEAST OREGON LAND ZONE
 1550 Dewey Avenue, Suite A
 Baker City, OR 97814
 (541) 523-1337

RECEIVED BY
 Morrow County Surveyor

Date: 1-5-2022
 Rec'd By: MPK
 No.: 4528N17
 Folder No.: _____



EXPIRES: 6/30/2023