

Section 17 Township 4S Range 25E
 County Morrow Date: May 4, 1998

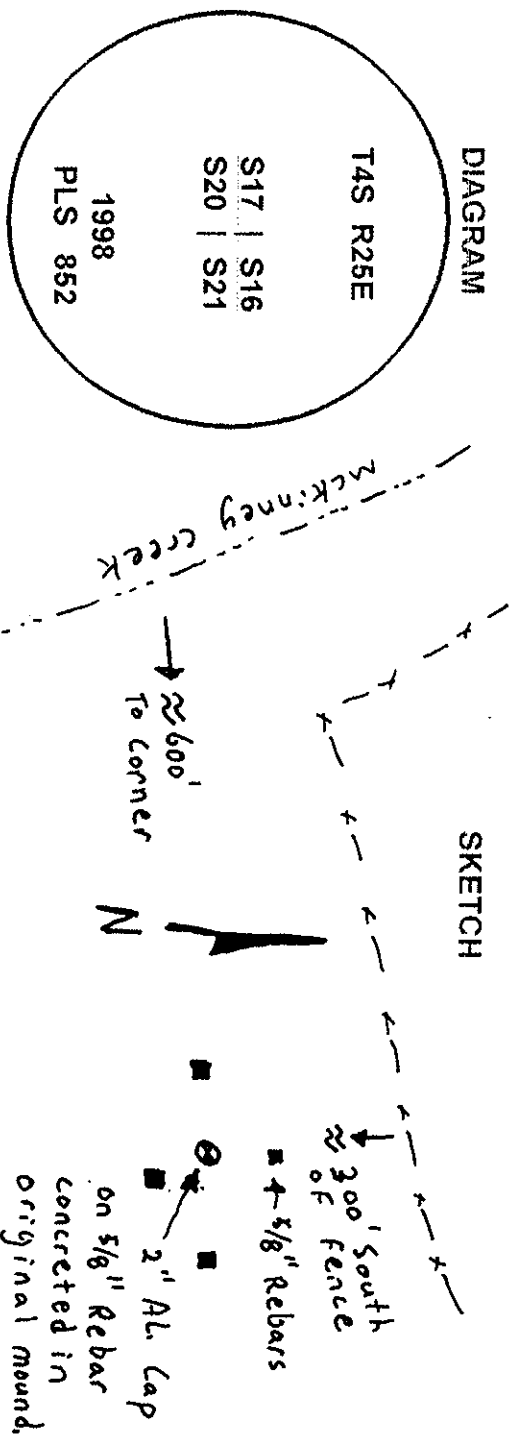
Corner Designation: 4S25N9

Section corner common to sections 16, 17, 20, and 21,
 T4S, R25E, W.M.

Condition Report Only
 Not found
 Remonumented
 Unrecorded
 Surveyed in
 Referenced out

Previous Renewals / Surveys, etc.
 The corner was originally established by Zenas F. Moody under contract No. 184 dated August 16, 1873. His record reads "Set post in stone mound for Cor. to Secs. 20-21-16-17".

Monument and Accessories found: (condition and source)
 Found a mound of stone and a decayed post. The mound lies about 200 feet south of the existing fence. There were no signs that there had ever been a fence at this location.



MONUMENT (S) AND ACCESSORIES SET (Procedures and Description)
 Set a 2 inch aluminum cap on a 5/8" x 24" rebar stamped as shown in the diagram above in the mound of stone and cemented the mound together.

- REFERENCES SET:
- A 5/8" x 24" rebar with a 1 1/8 inch red plastic cap stamped ORLS 852 and WALS 13922 bears N0°30'42"W a distance of 51.60 feet.
 - A 5/8" x 24" rebar with a 1 1/8 inch red plastic cap stamped ORLS 852 and WALS 13922 bears N89°38'35"E a distance of 85.68 feet.
 - A 5/8" x 24" rebar with a 1 1/8 inch red plastic cap stamped ORLS 852 and WALS 13922 bears S7°44'03"E a distance of 44.82 feet.
 - A 5/8" x 24" rebar with a 1 1/8 inch red plastic cap stamped ORLS 852 and WALS 13922 bears S87°16'24"W a distance of 36.77 feet.

Location and comments
 Monument and references located using GPS. Compass Declination
 Surveyors Seal

Firm / Agency
 Haddock Surveying
 Address
 P.O. Box 1574
 Pendleton, Or. 97801
 Party Chief
 Stephen K, Haddock

REGISTERED
 PROFESSIONAL
 LAND SURVEYOR

David L. Haddock

OREGON
 JULY 12, 1988
 DAVID L. HADDOCK
 852

RECEIVED BY:
 Morrow County Surveyor
 Date:
 Rec'd By:
 No.