

# OREGON CORNER RESTORATION FORM

SECTION 36 & 31  
COUNTY: MORROW

TOWNSHIP 4 NORTH  
DATE: 03/01/2016

RANGE 26 & 27 EAST

CORNER DESIGNATION: X-25

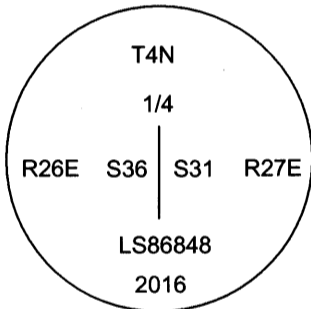
PREVIOUS RENEWALS / SURVEYS, etc.

THE ORIGINAL CORNER SET BY U.S. DEPUTY SURVEYOR E.E.HAFT IN 1861. HE SET A POST IN A MOUND.  
OTIS GOULD CONDUCTED A DEPENDENT RESURVEY COMPLETED IN 1941. AT THAT TIME HE SET A 2" DIAMETER 3' LONG IRON POST WITH A BRASS CAP AND DUG PITS.

MONUMENT and ACCESSORIES FOUND: ( CONDITION AND SOURCE )

NO EVIDENCE WAS FOUND OF THE MONUMENT.

DIAGRAM:



MONUMENT and ACCESSORIES SET ( PROCEDURES and DESCRIPTION )

SET A 2-1/2" BRASS CAP ON A 1" I.D. 30" LONG FLARED PIPE. MARKED AS SHOWN, AT POSITION DETERMINED BY SINGLE PROPORTION PER GLO 1941 DEPENDANT RESURVEY.

REFERENCES SET:

From a 6" X 8" fence post the corner bears S0°31'E 82.2'  
From a tee post on the south side of a farm road the corner bears N63°30'E 61.7'  
From a 6" X 8" fence post the corner bears N0°15'W 24.1'  
From a tee post on the north side of a farm road the corner bears S43°W 6.0'  
(Bearings are Grid)

LOCATION and COMMENTS

NAD83 / 2011 Oregon North coordinates (International Feet)  
N 773684.37  
E 8457755.55

SURVEYORS SEAL

REGISTERED  
PROFESSIONAL LAND  
SURVEYOR

OREGON  
NOVEMBER 13, 2012  
DAVID P. BAALMAN  
86848PLS

RENEWS: 12/31/2017

5-17-16 *David P. Baalman*

RECEIVED BY:

MORROW COUNTY SURVEYOR

DATE 5-17-16

REC'D BY: S.K.H.

NO. 4N 26 X 25

FIRM / AGENCY

ROGERS SURVEYING, Inc., P.S.  
1455 COLUMBIA PARK TRAIL, #201  
RICHLAND, WA 99352  
(509) 783-4141