

Record of Land Corner Monumentation

Sections 6 & 7 Township 4N Range 26E Code T4N R26E E01

County Morrow Date September 17, 2015

History of Original Corner Establishment:

The corner was first established in 1869 by J. B. David in Original GLO Survey of Township 4 North, Range, 26 East under Contract No. 131.
Record Reads: Set Post in Mound for Corner to Townships 4N, Range 25 & 26 E.
O. O. Gould completed a Dependent Resurvey in 1939.
Record Reads: Found 30" x 3" square Wooden Post, Set Brass Cap on 2" x 36" Iron Post.
In 1986 Krumbein set a 2 3/8" Brass Cap on 1 1/2" x 30" Iron Pipe below ground under Morrow County Survey C-827-K.

Description of evidence found:

Found 2 3/8" Brass Cap on 1 1/2" x 30" Iron Pipe buried in ground & Set by Krumbein under Morrow County Survey C-827-K. The Brass Cap fell in the center of alignment for a Proposed Roadway and would be Destroyed by Construction.

Description of monumentation and accessories established to perpetuate the location of this Section Corner:

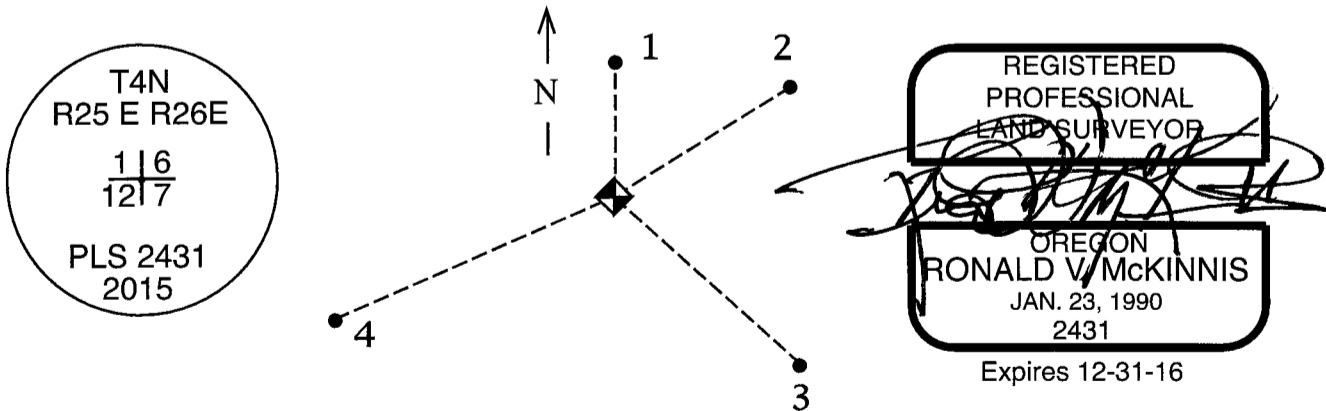
I Referenced the Monument Set by Krumbein Prior to Construction.
The Monument was Destroyed by Construction before I could remove it.
After Construction I Reset a New Monument, 2 1/2" Brass Cap on 1 1/2" x 30" Iron Pipe, at the Referenced Corner Location inside an Aluminum Monument Box in the Center Line of Completed Road, Lewis & Clark Drive.

In addition, the following Bearing Objects were Tagged with Bearing Object Placards and a Washer Stamped PLS 2431 as follows, or as described:

All Bearings & Distances are to the Center of the Washer, Plastic Cap, or Bolt as Described.

- 1 - A 5/8" Rebar w/Plastic Cap #2431 bears N 0° 37' 20" W 50.00 feet.
- 2 - A Steel Pole for Street Light bears N 75° 41' 43" E 118.95 feet.
- 3 - A Steel Power Tower bears S 72° 47' 43" E 123.86 feet.
Bolt on Tower Base Tagged with #2431 washer.
- 5 - A Steel Pole for Street Light bears S 73° 26' 00" W 119.95 feet.

All directions on placards are given to the set monument.



Office of County of Morrow
 State of Oregon I hereby certify that the within instrument was
 filed in this office for record on the 22 day of October, 2015
 County Surveyor by Steph K. Haddock Survey Number 4N26E1
 (COUNTY OFFICIAL) (DEPUTY)