

CORNER RESTORATION FORM

Township 4N Range 25E Section 21 County MORROW

State OREGON Date 2/27/2015 Number R-11

Corner Designation : 1/4 CORNER SEC. 21 & 28

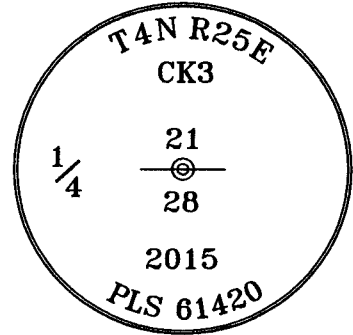
- Condition Report Only
- Not Found
- Renewed
- Surveyed In
- Referenced

Previous Renewals ORIGINAL SOURCE OF CORNER

UNDER GLO CONTRACT #131 BY JOHN DAVIS COMPLETED
OCTOBER 1869 SET POST IN MOUND OF EARTH
IN MAY OF 1986 SURVEY NO. C-810K SET A STANDARD BERNTSEN MONUMENT.
Accessories Found:
FOUND PIECES OF PIPE FLARES WHILE DIGGING THE HOLE FOR THE NEW MONUMENT.

MONUMENT DETAIL

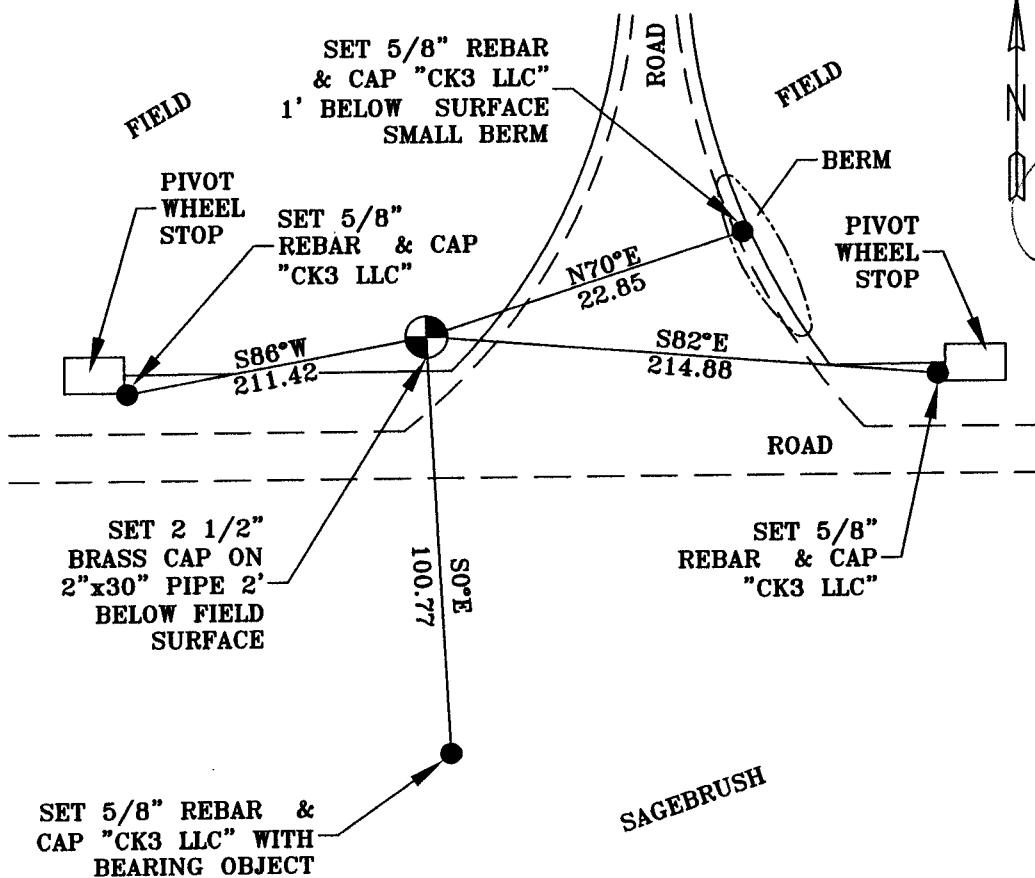
Found Set



Monument & Accessories Set (Procedure and Description)

- SET 2 1/2" BRASS CAP ON 2"x30" PIPE 2' BELOW FIELD SURFACE MARKED AS SHOWN, SET BY RETRACEMENT OF RECORD OF SURVEY C-810-K. BEARINGS ARE BASED ON SURVEY NO. 2015-1727C.
- SET 5/8" REBAR & CAP CK3 LLC AT GRADE S86°W 211.42. NEAR PIVOT WHEEL STOP.
- SET 5/8" REBAR & CAP CK3 LLC 1' BELOW SURFACE SMALL BERM N70°E 22.85.
- SET 5/8" REBAR & CAP CK3 LLC AT GRADE S82°E 214.88. NEAR PIVOT WHEEL STOP.
- SET 5/8" REBAR & CAP CK3 LLC AT GRADE S0°E 100.77, WITH BEARING OBJECT.

Sketch of Monument, Accessories and General Area



Surveyor's Seal

**REGISTERED
PROFESSIONAL
LAND SURVEYOR**

**OREGON
MAY 10, 2011
LANCE CLARK KING
61420**

RENEWS: 6/30/2015

Agency:

CK3, LLC
945 W. ORCHARD
HERMISTON OREGON 97838
OFFICE: 541-567-2345
FAX: 541-567-2305
WEB: CK3LLC.NET
Field Book # 0-289

**COUNTY SURVEYOR
RECORDING INFO**

Received 3-16-2015
Filed 3-16-2015
Survey No. 2015-1727C
Drawing No. 1727
Index No. R-11